

## Excellent Integrated System Limited

Stocking Distributor

Click to view price, real time Inventory, Delivery & Lifecycle Information:

[Phoenix Contact](#)  
[1679427](#)

For any questions, you can email us directly:

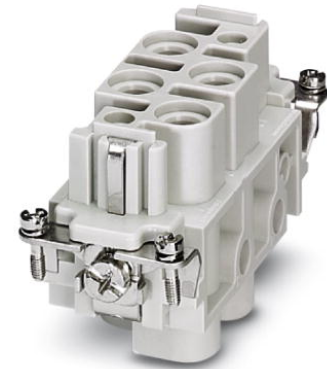
[sales@integrated-circuit.com](mailto:sales@integrated-circuit.com)



Extract from the online catalog


## HC-K 4/0-EBUS

Order No.: 1679427



<http://eshop.phoenixcontact.de/phoenix/treeViewClick.do?UID=1679427>

HEAVYCON female insert, K4/0 series, 4-pos., screw connection

Commercial data	
GTIN (EAN)	 4 017918 168865
sales group	D007
Pack	1 pcs.
Customs tariff	85366990
Catalog page information	Page 445 (PC-2009)

### Product notes

WEEE/RoHS-compliant since:  
05/19/2006



<http://www.download.phoenixcontact.com>  
Please note that the data given here has been taken from the online catalog. For comprehensive information and data, please refer to the user documentation. The General Terms and Conditions of Use apply to Internet downloads.

## Technical data

General data	
Note	For HEAVYCON-ADVANCE housings of B16 type and HEAVYCON housings of B16 and B32 types
Connection method	Screw connection

HC-K 4/0-EBUS Order No.: 1679427

<http://eshop.phoenixcontact.de/phoenix/treeViewClick.do?UID=1679427>

Tightening torque	3 Nm (4.0 mm <sup>2</sup> ... 16 mm <sup>2</sup> )
	2 Nm (2.5 mm <sup>2</sup> )
	1.2 Nm (1.5 mm <sup>2</sup> )
Ambient temperature (operation)	-40 °C ... 125 °C
Pollution degree	3
Surge voltage category	III
Insertion/withdrawal cycles	≥ 500
Design	K4/0
Conductor cross-section	1.5 mm <sup>2</sup> ... 16 mm <sup>2</sup>
Connection cross-section AWG	16 ... 6
Stripping length of the individual wire	14 mm

**Material data**

Inflammability class acc. to UL 94	V0
Contact material	Cu alloy
Contact surface material	Ag
Contact carrier material	PC

**Electrical characteristics**

Rated voltage (III/3)	830 V
Rated surge voltage	8 kV
Rated current	80 A (power contacts)

**Certificates / Approvals**



Certification

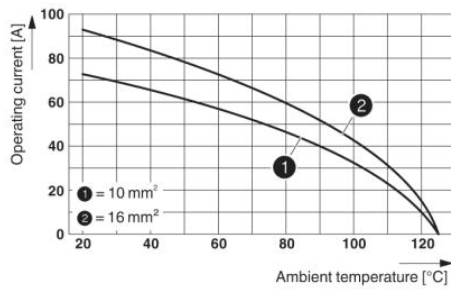
CSA, GOST, UL

HC-K 4/0-EBUS Order No.: 1679427

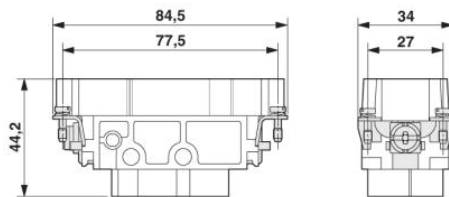
<http://eshop.phoenixcontact.de/phoenix/treeViewClick.do?UID=1679427>

## Diagrams/Drawings

### Diagram



### Dimensioned drawing



Female insert

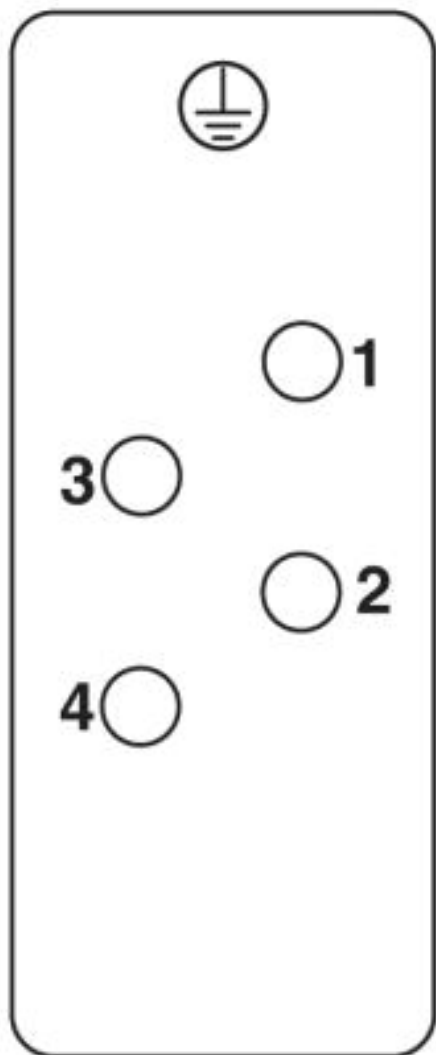
HC-K 4/0-EBUS Order No.: 1679427

<http://eshop.phoenixcontact.de/phoenix/treeViewClick.do?UID=1679427>

---

Schematic diagram

---



HC-K 4/0-EBUS Order No.: 1679427

<http://eshop.phoenixcontact.de/phoenix/treeViewClick.do?UID=1679427>

---

#### Address

PHOENIX CONTACT Deutschland GmbH  
Flachsmarktstr. 8  
32825 Blomberg, Germany  
Phone +49 5235 3 12000  
Fax +49 5235 3 41200  
<http://www.phoenixcontact.de>



© 2010 Phoenix Contact  
Technical modifications reserved;