

Excellent Integrated System Limited

Stocking Distributor

Click to view price, real time Inventory, Delivery & Lifecycle Information:

[Phoenix Contact](#)
[1679333](#)

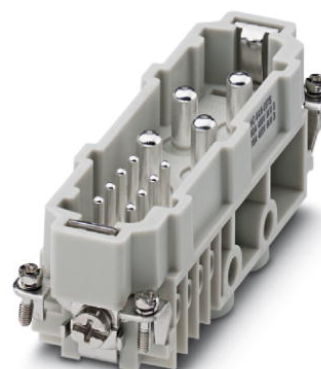
For any questions, you can email us directly:
sales@integrated-circuit.com



Extract from the online catalog


HC-K 4/8-ESTS

Order No.: 1679333



<http://eshop.phoenixcontact.de/phoenix/treeViewClick.do?UID=1679333>

HEAVYCON male insert, K4/8 series, for 4 power and 8 control contacts, screw connection without wire protection

Commercial data	
GTIN (EAN)	 4 017918 163570
sales group	D007
Pack	1 pcs.
Customs tariff	85366990
Catalog page information	Page 446 (PC-2009)

Product notes

WEEE/RoHS-compliant since:
07/06/2006



<http://www.download.phoenixcontact.com>
Please note that the data given here has been taken from the online catalog. For comprehensive information and data, please refer to the user documentation. The General Terms and Conditions of Use apply to Internet downloads.

Technical data

General data	
Note	For housing HC-B24
Connection method	Screw connection (power contacts) Screw connection (control contacts)
Tightening torque	2 Nm (3 Nm (4 mm ² ... 16 mm ²)) 0.5 Nm (control contacts)

HC-K 4/8-ESTS Order No.: 1679333

<http://eshop.phoenixcontact.de/phoenix/treeViewClick.do?UID=1679333>

Ambient temperature (operation)	-40 °C ... 125 °C
Pollution degree	3
Surge voltage category	III
Insertion/withdrawal cycles	≥ 500
Design	K4/8
Conductor cross-section	1.5 mm ² ... 16 mm ² (power contacts) 0.5 mm ² ... 2.5 mm ² (control contacts)
Connection cross-section AWG	16 ... 6 (power contacts) 20 ... 14 (control contacts)
Stripping length of the individual wire	14 mm (Power contact) 7 mm (control contact)
Assembly instructions	Plug-in connections may only be operated only when there is no load/voltage.

Material data

Inflammability class acc. to UL 94	HB
Contact material	Cu alloy
Material of contact surface, power contact	Ag
Material of contact surface, control contact	Ag
Contact carrier material	PA

Electrical characteristics

Rated voltage (III/3)	400 V (power contacts)
	400 V (control contacts)
Rated surge voltage	6 kV (power contacts)
	6 kV (control contacts)
Rated current	80 A (power contacts)
	16 A (control contacts)

Certificates / Approvals


Certification

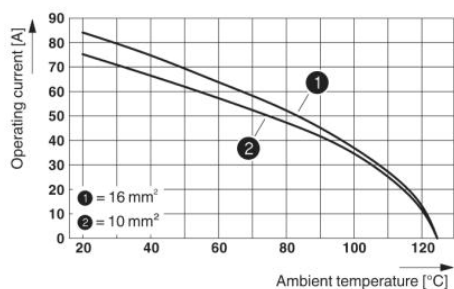
GOST, UL

HC-K 4/8-ESTS Order No.: 1679333

<http://eshop.phoenixcontact.de/phoenix/treeViewClick.do?UID=1679333>

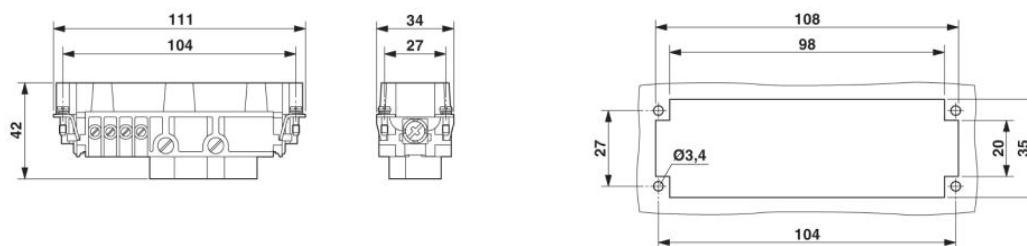
Diagrams/Drawings

Diagram



Derating diagram

Dimensioned drawing

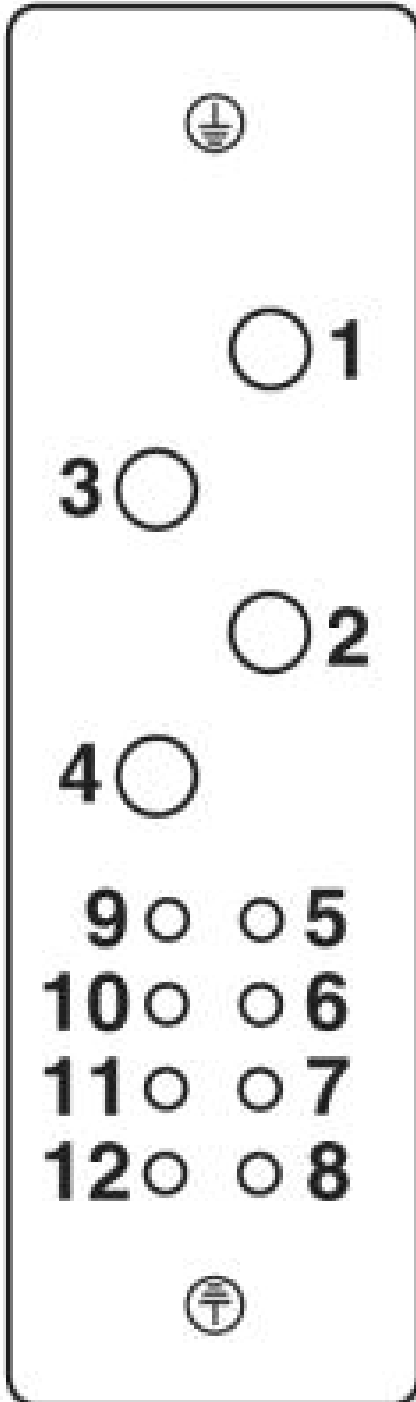


Panel cutout

HC-K 4/8-ESTS Order No.: 1679333

<http://eshop.phoenixcontact.de/phoenix/treeViewClick.do?UID=1679333>

Schematic diagram



HC-K 4/8-ESTS Order No.: 1679333

<http://eshop.phoenixcontact.de/phoenix/treeViewClick.do?UID=1679333>

Address

PHOENIX CONTACT Deutschland GmbH
Flachsmarktstr. 8
32825 Blomberg, Germany
Phone +49 5235 3 12000
Fax +49 5235 3 41200
<http://www.phoenixcontact.de>



© 2010 Phoenix Contact
Technical modifications reserved;