

Excellent Integrated System Limited

Stocking Distributor

Click to view price, real time Inventory, Delivery & Lifecycle Information:

[Phoenix Contact](#)
[1647721](#)

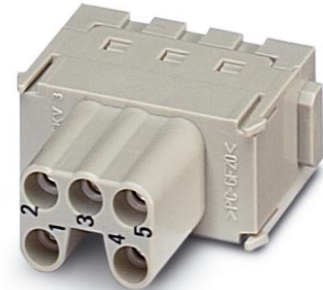
For any questions, you can email us directly:
sales@integrated-circuit.com



Extract from the online catalog


HC-M-05-MOD-BUZ

Order No.: 1647721



<http://eshop.phoenixcontact.de/phoenix/treeViewClick.do?UID=1647721>

HEAVYCON contact insert module, female, 5-pos., spring-cage connection

Commercial data	
GTIN (EAN)	 4 017918 969561
sales group	D042
Pack	2 pcs.
Customs tariff	85366990
Catalog page information	Page 455 (PC-2009)

Product notes

WEEE/RoHS-compliant since:
06/13/2006



<http://www.download.phoenixcontact.com>
 Please note that the data given here has been taken from the online catalog. For comprehensive information and data, please refer to the user documentation. The General Terms and Conditions of Use apply to Internet downloads.

Technical data

Electrical characteristics	
Note	For housing HC-B6 to B48, for housing HC-ADVANCE-B6 to B24, hinged retaining frame HC-M-MHR... necessary
Rated voltage (III/3)	400 V
Rated current	16 A
Rated surge voltage	6 kV
Ambient temperature (operation)	-40 °C ... 125 °C
Number of positions	5

HC-M-05-MOD-BUZ Order No.: 1647721
<http://eshop.phoenixcontact.de/phoenix/treeViewClick.do?UID=1647721>

Mechanical characteristics

Conductor cross-section	0.14 mm ² ... 2.5 mm ²
Connection cross-section AWG	26 ... 14
Stripping length of the individual wire	7 mm
Insertion/withdrawal cycles	≥ 500

General characteristics

Number of module slots	1
Connection method	Spring-cage connection
Inflammability class acc. to UL 94	V0
Pollution degree	3
Surge voltage category	III
Assembly instructions	Housing height ≥ 52 mm. Plug-in connections may only be operated only when there is no load/voltage.

Material data

Contact material	Copper alloy
Contact surface material	Ag
Contact carrier material	PC

Certificates / Approvals

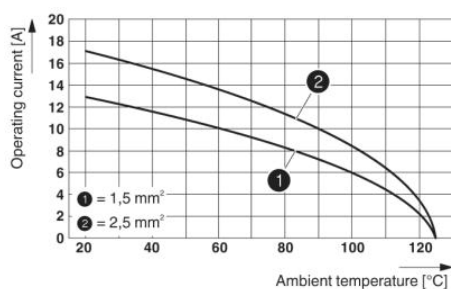


Certification

UL

Diagrams/Drawings

Diagram

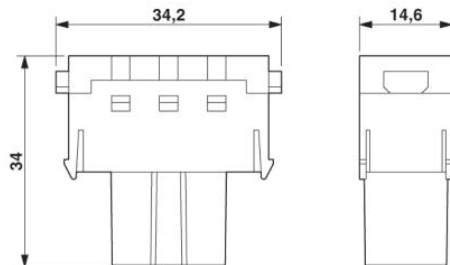


Derating diagram (6 modules in HC-B 24 housing)

HC-M-05-MOD-BUZ Order No.: 1647721

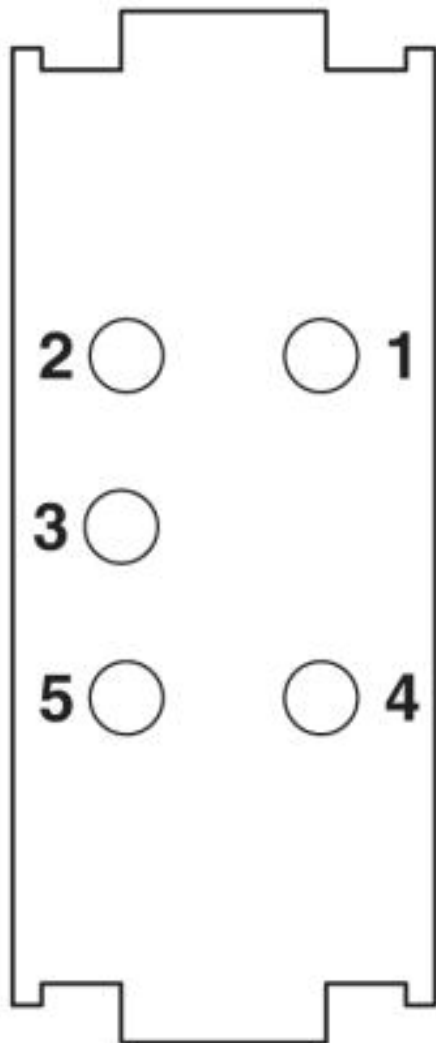
<http://eshop.phoenixcontact.de/phoenix/treeViewClick.do?UID=1647721>

Dimensioned drawing



Female insert

Schematic diagram



Connector pin assignment, connection side

HC-M-05-MOD-BUZ Order No.: 1647721

<http://eshop.phoenixcontact.de/phoenix/treeViewClick.do?UID=1647721>

Address

PHOENIX CONTACT Deutschland GmbH
Flachsmarktstr. 8
32825 Blomberg, Germany
Phone +49 5235 3 12000
Fax +49 5235 3 41200
<http://www.phoenixcontact.de>



© 2010 Phoenix Contact
Technical modifications reserved;