

Excellent Integrated System Limited

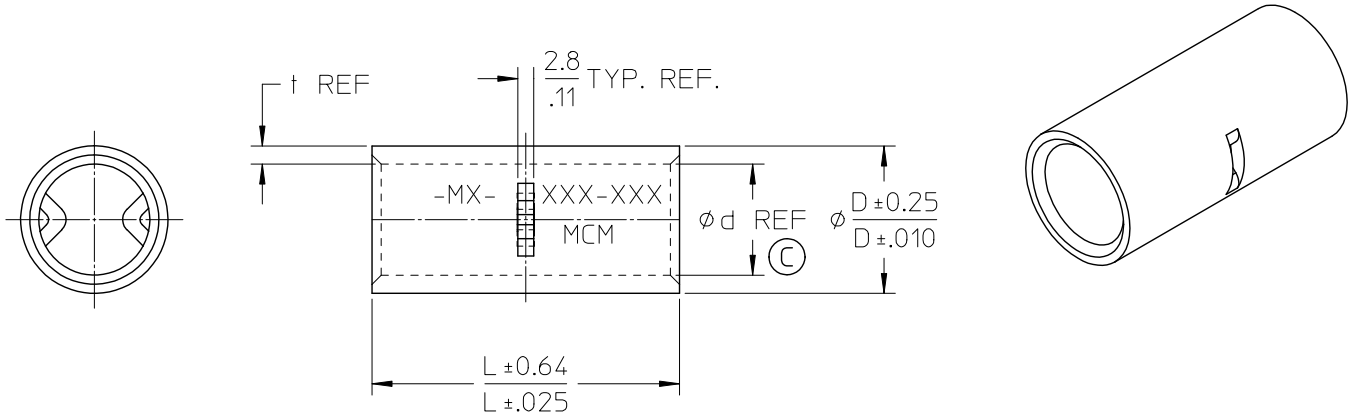
Stocking Distributor

Click to view price, real time Inventory, Delivery & Lifecycle Information:

[Molex Connector Corporation](#)
[0193190004](#)

For any questions, you can email us directly:

sales@integrated-circuit.com



MATERIAL NO.	WIRE RANGE		L	Dø	dø	t
	MCM	mm ²				
193190004	500-600	242.3 - 325	72.0 2.83	37.0 1.46	28.0 1.10	4.5 0.18
193190003	350-450	192.6 - 242.3	63.0 2.48	32.0 1.26	24.0 0.94	4.0 0.16
193190002	300-350	152 - 192.6	57.0 2.24	28.0 1.10	21.0 0.83	3.5 0.14
193190001	250-300	117.2 - 152	54.0 2.13	25.9 1.02	19.5 0.77	3.2 0.13

ENTER DESCRIPTION EC NO: WNA2009-0806 DRAWN: MOELLER CHKD: RDEROSS APPR: RDEROSS 2009/06/05 2009/06/08 2009/06/08	QUALITY SYMBOLS ▽=0 ▽=0	GENERAL TOLERANCES (UNLESS SPECIFIED)		DIMENSION STYLE MM/IN		SCALE 1:1	DESIGN UNITS METRIC	THIRD ANGLE PROJECTION	
		4 PLACES ± --- ± ---		DRAWN BY T. MOELLER DATE 2009/02/04		TITLE BRAZED SEAM BUTT CONNECTORS (250-600 MCM)			
		3 PLACES ± --- ± ---		CHECKED BY T. MOELLER DATE 2009/02/04					
		2 PLACES ± --- ± ---		APPROVED BY R. DEROSS DATE 2009/02/04		MOLLEX MOLEX INCORPORATED			
		1 PLACE ± --- ± ---		MATERIAL NO.					
ANGULAR ±1/2°		DRAFT WHERE APPLICABLE MUST REMAIN WITHIN DIMENSIONS		SEE CHART		DOCUMENT NO. SD-19319-001	SHEET NO. 1 OF 1		

NOTES:
 1. MATERIAL:
 TIN PLATED COPPER
 2. TERMINALS MARKED
 AS SHOWN W/
 CORRESPONDING WIRE
 SIZE