

Excellent Integrated System Limited

Stocking Distributor

Click to view price, real time Inventory, Delivery & Lifecycle Information:

[Littelfuse](#)
[151.5155.4502](#)

For any questions, you can email us directly:
sales@integrated-circuit.com

ATS CERAMIC FUSE RATED 36V

RoHS



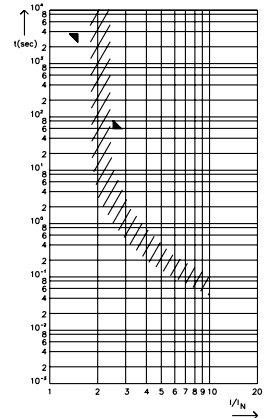
Specifications

Insulating Body: Out of ceramic
 Melting Element: See chart below
 Complies with: DIN 72581-1

Ordering Information

Part Number	Package Size
151.51xx.xx6	100
151.51xx.xx2	5000

Pre-Arcing Time-Limits



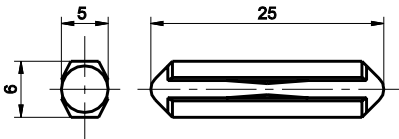
FI = 1.00 (max. operating current:
 $1.0 \times I_{rat}$ at 23°C)

Description

36 VDC Torpedo-style fuse links with current rating 5A to 25A.

Dimensions

Dimensions in mm



Time-Current Characteristics

% of Rating	Opening Time Min / Max (s)
150	1 h / -
250	- / 60 s

Ratings

Part Number	Current Rating	Melting Element	Housing Color	Typ. Voltage Drop	
				Standard DIN max.	Littelfuse max.
151.5155.450_	5 A	Zn, gal. SN	Yellow	100 mV	50mV
151.5112.4806	8 A	Zn	White	100 mV	50mV
151.5152.4802	8 A	Zn, gal. SN	White	100 mV	50mV
151.5162.4802	8 A	CuZn	White	100 mV	50mV
151.5173.4802	8 A	CuZn	White	100 mV	50mV
151.5182.516_	16 A	Cu	Red	100 mV	50mV
151.5182.5162	16 A	Zn, gal. SN	Red	100 mV	50mV
151.5182.525_	25 A	Cu	Blue	100 mV	50mV

Corresponding holder see Section "Fuse Holders."