

Excellent Integrated System Limited

Stocking Distributor

Click to view price, real time Inventory, Delivery & Lifecycle Information:

[Würth Electronics Midcom](#)
[750845240](#)

For any questions, you can email us directly:

sales@integrated-circuit.com

CUSTOMER TERMINAL	RoHS	LEAD(Pb)-FREE
Sn96%, Ag4%	Yes	Yes

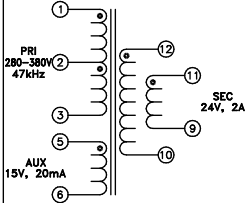
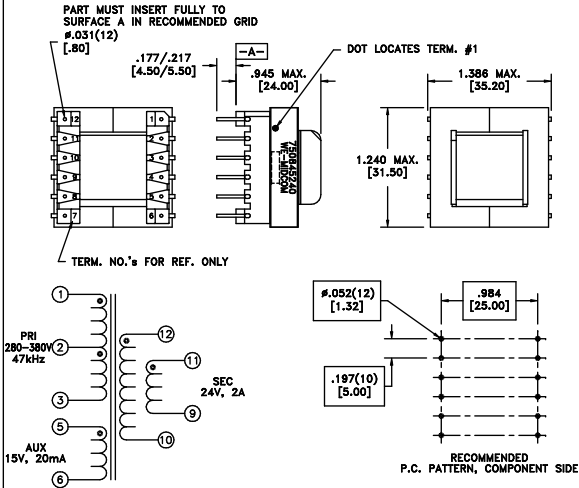
more than you expect



Midcom

ELECTRICAL SPECIFICATIONS @ 25°C unless otherwise noted:

PARAMETER	TEST CONDITIONS	VALUE
D.C. RESISTANCE	1-3 @20°C	1.8 ohms max.
D.C. RESISTANCE	5-6 @20°C	0.25 ohms max.
D.C. RESISTANCE	12-10 tie(12+11, 9+10), @20°C	0.03 ohms max.
INDUCTANCE	1-3 10kHz, 100mVAC, Is	2.60mH ±10%
LEAKAGE INDUCTANCE	1-3 tie(6+5, 9+10+11+12), 100kHz, 100mVAC, Is	60uH max.
DIELECTRIC	1-12 tie(3+5), 4500VAC, 1 second	3600VAC, 1 minute
DIELECTRIC	1-11 tie(3+5), 4500VAC, 1 second	3600VAC, 1 minute
URNS RATIO	(1-3):(12-10)	11.429:1, ±3%
URNS RATIO	(1-3):(11-9)	11.429:1, ±3%
URNS RATIO	(1-3):(5-6)	17.778:1, ±3%



GENERAL SPECIFICATIONS:
OPERATING TEMPERATURE RANGE: -40°C to +125°C including temp rise.

Wire insulation & RoHS status not affected by wire color.
Wire insulation color may vary depending on availability.

DETAILS SUBJECT TO CHANGE

REV.	DATE	Packaging Specifications Method: Tray PKG-0504 www.we-online.com/midcom		Tolerances unless otherwise specified: Angles: ±1° Fractions: ±1/64 Decimals: ±.005 [1.3] Footprint: ±.001 [0.3]	DRAWING TITLE TRANSFORMER	PART NO. 750845240
6A	10/10	SEE REVISION SHEET FOR REVISION LEVEL		This drawing is dual dimensioned. Dimensions in brackets are in millimeters.	e!Sos p/n: 750845240	SPECIFICATION SHEET 1 OF 1