

## Excellent Integrated System Limited

Stocking Distributor

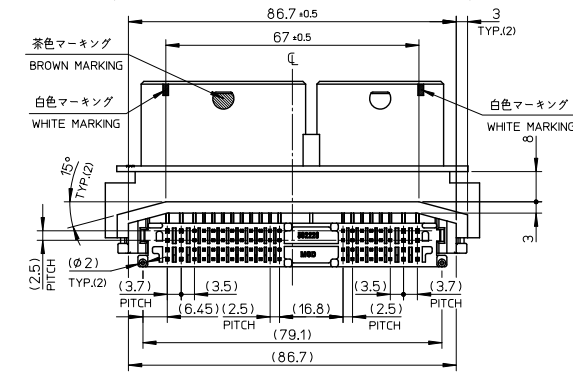
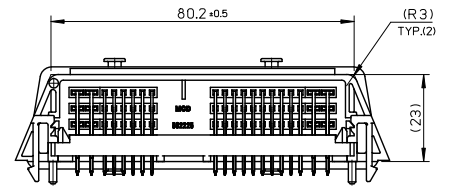
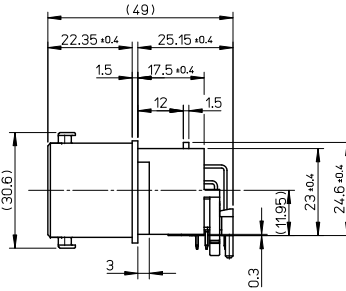
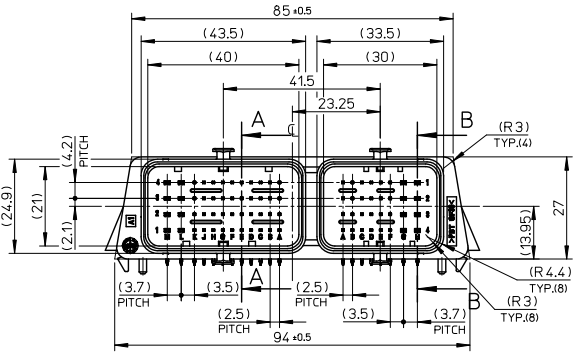
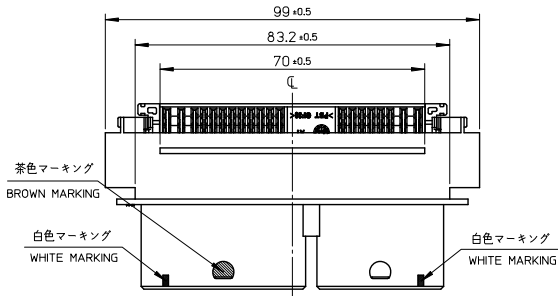
Click to view price, real time Inventory, Delivery & Lifecycle Information:

[Molex Connector Corporation](#)  
[5022250801](#)

For any questions, you can email us directly:

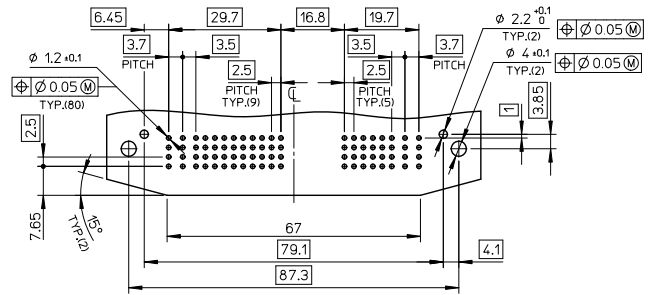
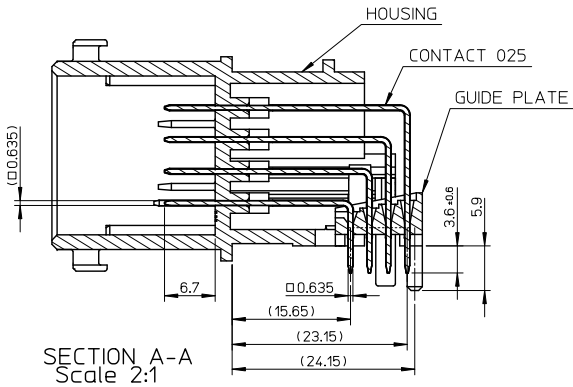
[sales@integrated-circuit.com](mailto:sales@integrated-circuit.com)

10 9 8 7 6 5 4 3 2 1

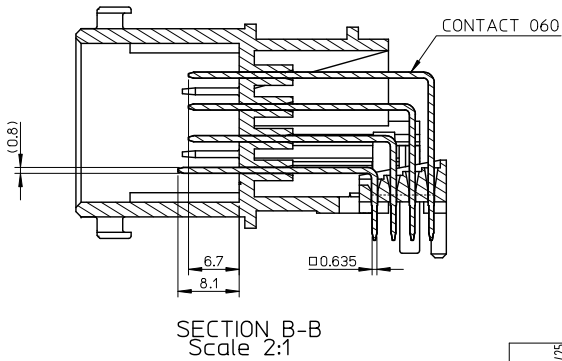


RELEASED EC NO. JTR2010-0090 DRWN: S.W.D.O. 2006/05/25 CHKD: MA. YAMAMOTO 2006/5/25 APPR: MAYAMOTO 2010/03/10 REV 0	GENERAL TOLERANCES (UNLESS SPECIFIED)		DIMENSION STYLE MM ONLY		SCALE 1:1	DESIGN UNITS METRIC	THIRD ANGLE PROJECTION
	10 UNDER	± 0.2	DRAWN BY S. ANDO		DATE 2006/5/25	TITLE CMC HEADER 80PIN	
	10 OVER 30 UNDER	± 0.25	CHECKED BY MA. YAMAMOTO		DATE 2006/5/25	MOLEX INCORPORATED	
	30 OVER	± 0.3	APPROVED BY MAYAMOTO		DATE 2010/03/09	DOCUMENT NO. SD-502225-001	
	ANGULAR ±2 °		MATERIAL NO. 502225-0801		SHEET NO. 1 OF 2		THIS DRAWING CONTAINS INFORMATION THAT IS PROPRIETARY TO MOLEX INCORPORATED AND SHOULD NOT BE USED WITHOUT WRITTEN PERMISSION
DRAFT WHERE APPLICABLE MUST REMAIN WITHIN DIMENSIONS							

10 9 8 7 6 5 4 3 2 1

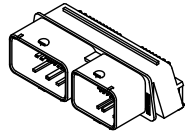


基板穴推奨寸法 (部品実装例)  
RECOMMENDED PCB LAYOUT (COMPONENT SIDE)



注記  
NOTES

1. ハウジング材料: PBT, GF30%, 黒色  
HOUSING MATERIAL: PBT, GF30%, BLACK
2. 端子材料: 銅合金  
CONTACT MATERIAL: COPPER ALLOY
3. 端子表面処理:  
コンタクト部: 鍍めっき  
テール部: 鍍めっき  
T尾=ツェルカッパ (025, 060端子全番)  
CONTACT PLATING  
CONTACT AREA: Sn PLATING  
TAIL AREA: Sn PLATING  
UNDER NICKEL PLATING (ALL OVER)
4. 適合基板厚: 1.6±0.1mm  
APPLICABLE PCB THICKNESS: 1.6±0.1mm
5. 適合端子コネクタ:  
64319-3211 (32ピン, 黒, 右)  
64320-1519 (28ピン, 黒, 右) 又は  
64319-1211 (32ピン, 黒, 左)  
64320-3319 (28ピン, 黒, 左)  
APPLICABLE MATING CONNECTOR:  
64319-3211 (32PIN, BLACK, RIGHT)  
64320-1519 (28PIN, BROWN, LEFT) OR  
64319-1211 (32PIN, BLACK, LEFT)  
64320-3319 (28PIN, BROWN, RIGHT)
6. 製品仕様書:  
PS-64319-001参照  
PRODUCT SPECIFICATION:  
REFER TO PS-64319-001



RELEASED EC NO. JTR2010-0090 DRAWN: SANDO 2006/05/25 CHECKED: MA, YAMAMOTO 2006/5/25 APPROV: MAYAMAMOTO 2010/03/10	GENERAL TOLERANCES (UNLESS SPECIFIED)		DIMENSION STYLE	SCALE	DESIGN UNITS	THIRD ANGLE PROJECTION
			MM ONLY	1:1	METRIC	
	10 UNDER	± 0.2	DRAWN BY	DATE	TITLE	
	10 OVER 30 UNDER	± 0.25	S. ANDO	2006/5/25	CMC HEADER 80PIN	
30 OVER	± 0.3	CHECKED BY	DATE	MOLEX INCORPORATED		
ANGULAR	± 2 °	APPROVED BY	DATE	DOCUMENT NO.		
DRAFT WHERE APPLICABLE MUST REMAIN WITHIN DIMENSIONS		MAYAMAMOTO	2010/03/09	SD-502225-001		
		MATERIAL NO.		SHEET NO.		
		SEE SHEET No.1		2 OF 2		
		THIS DRAWING CONTAINS INFORMATION THAT IS PROPRIETARY TO MOLEX INCORPORATED AND SHOULD NOT BE USED WITHOUT WRITTEN PERMISSION				