

## Excellent Integrated System Limited

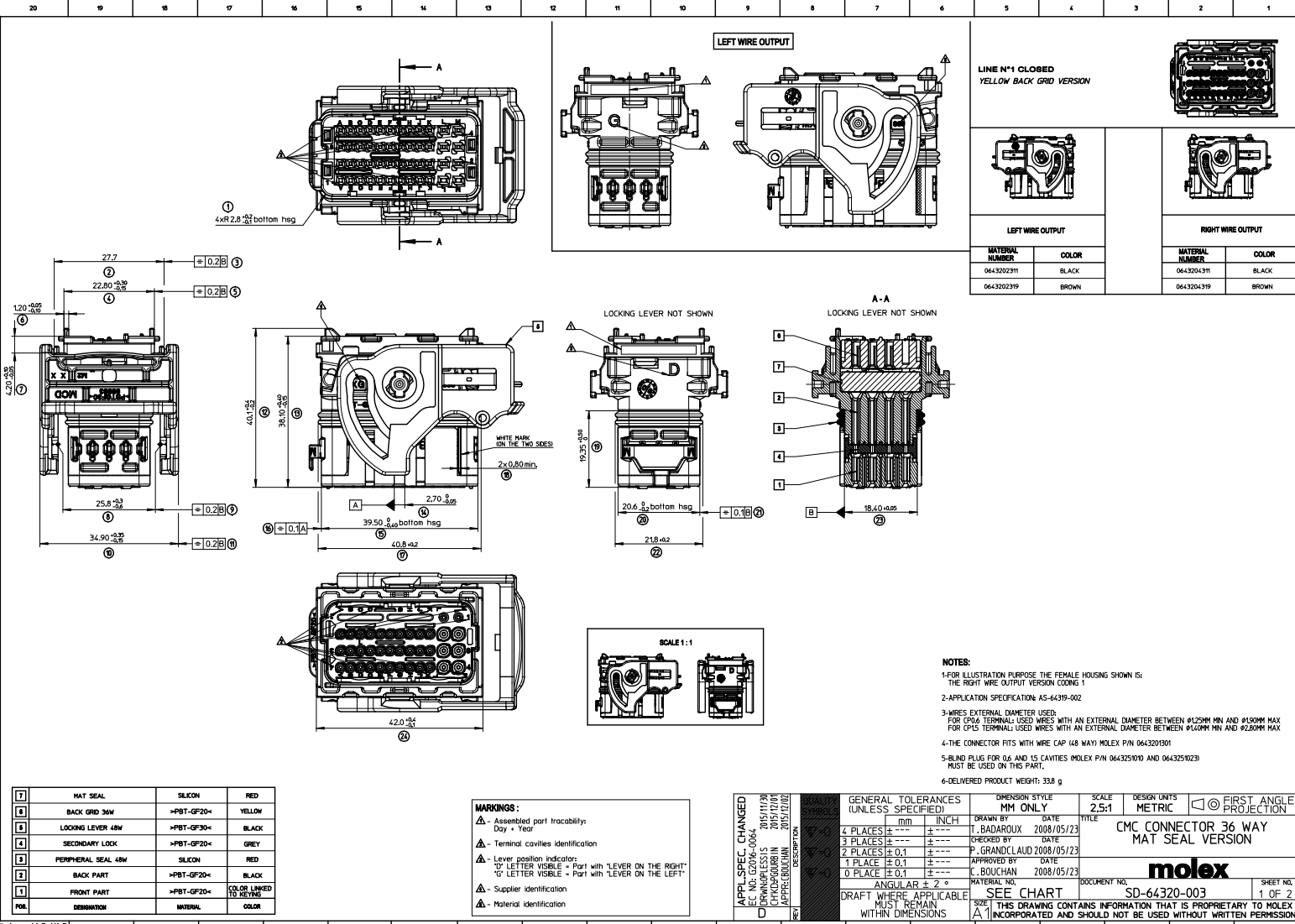
Stocking Distributor

Click to view price, real time Inventory, Delivery & Lifecycle Information:

[Molex Connector Corporation](#)  
[0643204319](#)

For any questions, you can email us directly:

[sales@integrated-circuit.com](mailto:sales@integrated-circuit.com)

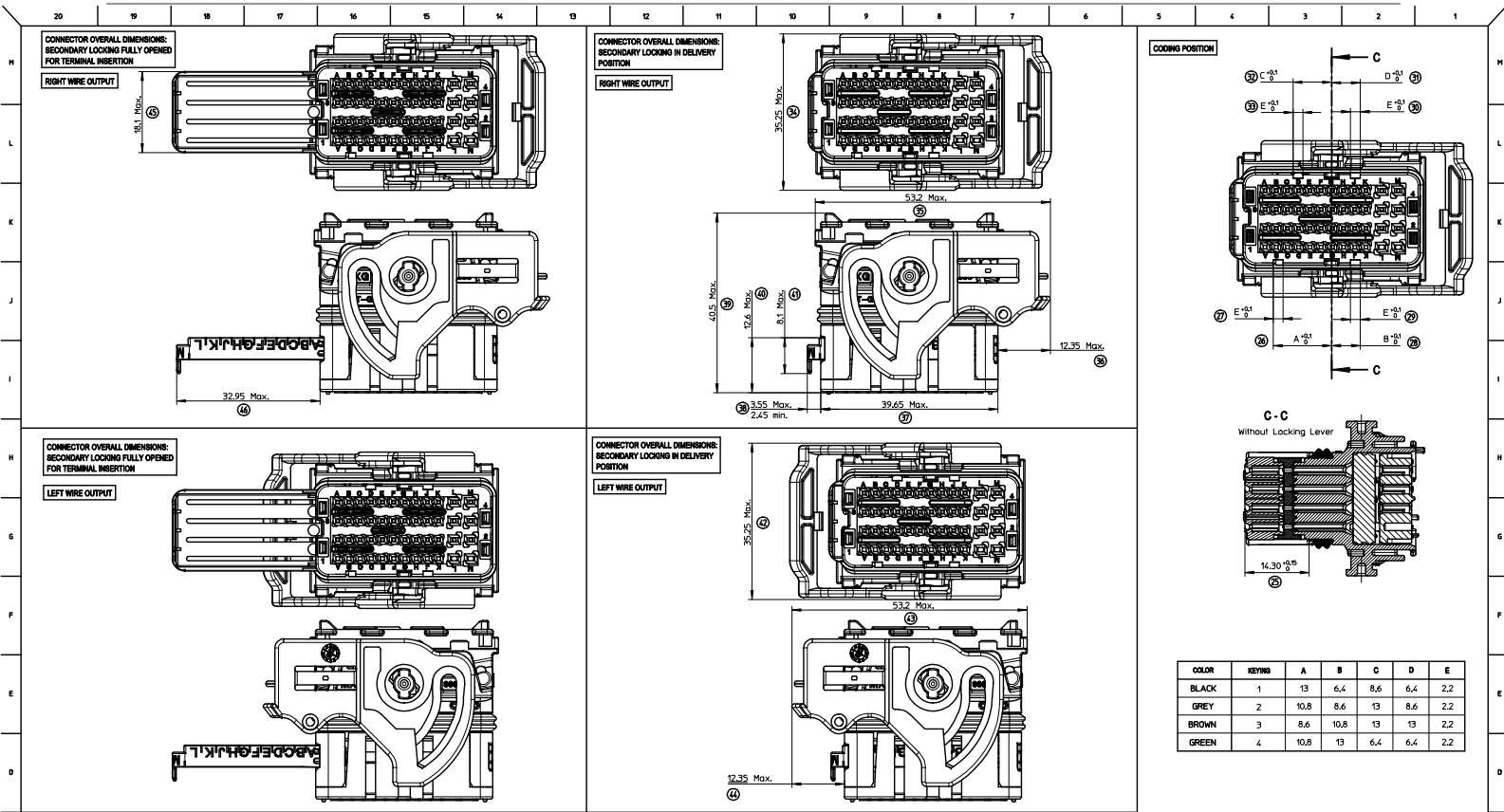


[7]	MAT SEAL	SILICON	RED
[8]	BACK GRID 36W	>PBT-GF20<	YELLOW
[9]	LOCKING LEVER 48W	>PBT-GF30<	BLACK
[4]	SECONDARY LOCK	>PBT-GF20<	GREY
[3]	PERIPHERAL SEAL 48W	SILICON	RED
[2]	BACK PART	>PBT-GF20<	BLACK
[1]	FRONT PART	>PBT-GF20<	COLOR LINKED TO KEYING
PKL	DEFINITION	MATERIAL	COLOR

**MARKINGS :**

- ▲ - Assembled part traceability: Day + Year
- ▲ - Terminal cavities identification
- ▲ - Lever position indicators: 'R' LETTER VISIBLE = Part with 'LEVER ON THE RIGHT' 'L' LETTER VISIBLE = Part with 'LEVER ON THE LEFT'
- ▲ - Supplier identification
- ▲ - Material identification

APPL SPEC CHANGED EC NO. 02046-0044 2015/11/30 DRAWN/APP/LESS CHICK/DOUBRIN 2015/12/01 APPROVED/BUCHANAN 2015/12/02 (REV)	GENERAL TOLERANCES (UNLESS SPECIFIED)		DIMENSION STYLE MM ONLY		SCALE 2.5:1	DESIGN UNITS METRIC	FIRST ANGLE PROJECTION
	4 PLACES ± 0.1 mm INCH ± 0.004		DRAWN BY DATE T. BADAROUX 2008/05/23		TITLE CMC CONNECTOR 36 WAY MAT SEAL VERSION		
	3 PLACES ± 0.1 mm INCH ± 0.004		CHECKED BY DATE P. GRANDCLAUD 2008/05/23		MATERIAL NO. SEE CHART		
	2 PLACES ± 0.1 mm INCH ± 0.004		APPROVED BY DATE C. BUCHANAN 2008/05/23		DOCUMENT NO. SD-64320-003		
1 PLACE ± 0.1 mm INCH ± 0.004		ANGULAR ± 2 °		SHEET NO. 1 OF 2			
0 PLACE ± 0.1 mm INCH ± 0.004		DRAFT WHERE APPLICABLE MUST REMAIN WITHIN DIMENSIONS		THIS DRAWING CONTAINS INFORMATION THAT IS PROPRIETARY TO MOLEX INCORPORATED AND SHOULD NOT BE USED WITHOUT WRITTEN PERMISSION			



COLOR	KEYING	A	B	C	D	E
BLACK	1	13	6.4	8.6	6.4	2.2
GREY	2	10.8	8.6	13	8.6	2.2
BROWN	3	8.6	10.8	13	13	2.2
GREEN	4	10.8	13	6.4	6.4	2.2

TERMINALS USED				
Cavity #	FEMALE TERMINALS (Pitch mm)	PLATING	MOLEX P/N	min / MAX WIRE INSULATION DIAMETER (mm)
A1 to K1 A2 to K2 A3 to K3 A4 to K4	CP 0.6 0.35mm2	Tin plated	0643221019	Ø1.25 min / Ø1.40 Max
		Gold plated	0643221229	
	CP 0.6 0.5mm2	Tin plated	0643221039	Ø1.40 min / Ø1.70 Max
		Gold plated	0643221239	
L1 to L4 M1 to M4	CP 1.5 0.5mm2 to 1mm2	Tin plated	0643221029	Ø1.60 min / Ø1.90 Max
		Gold plated	0643221219	
	CP 1.5 >1mm2 to 2mm2	Tin plated	0643231029	Ø1.40 min / Ø2.15 Max
		Gold plated	0643231319	
		Tin plated	0643231039	Ø2.10 min / Ø2.80 Max
		Gold plated	0643231219	

<b>APPLIC. SPEC. CHANGED</b> E.C. NO. 0016-0046 2015/11/30 DRAWN/ISSUED 2015/12/01 CHK'D/PGM/IN 2015/12/01 APPR'D/ECN/AN 2015/12/01 REV. DESCRIPTION	GENERAL TOLERANCES (UNLESS SPECIFIED) mm INCH 4 PLACES ±--- ±--- 3 PLACES ±--- ±--- 2 PLACES ± 0.1 ±--- 1 PLACE ± 0.1 ±--- 0 PLACE ± 0.1 ±---		DIMENSION STYLE MM ONLY	SCALE 2.5:1	DESIGN UNITS METRIC	FIRST ANGLE PROJECTION
	DRAWN BY T. BADAROUX 2008/05/23 CHECKED BY DATE P. GRANDCLAUD 2008/05/23 APPROVED BY DATE C. BOUCHAN 2008/05/23 MATERIAL NO.		TITLE CMC CONNECTOR 36 WAY MAT SEAL VERSION		<b>molex</b>	
	ANGULAR ± 2 ° DRAFT WHERE APPLICABLE MUST REMAIN WITHIN DIMENSIONS		SEE SHEET 1		DOCUMENT NO. SD-64320-003	
	THIS DRAWING CONTAINS INFORMATION THAT IS PROPRIETARY TO MOLEX AND SHOULD NOT BE USED WITHOUT WRITTEN PERMISSION		SHEET NO. 2 OF 2			