

Excellent Integrated System Limited

Stocking Distributor

Click to view price, real time Inventory, Delivery & Lifecycle Information:

[Phoenix Contact](#)
[2954277](#)

For any questions, you can email us directly:

sales@integrated-circuit.com



Extract from the online catalog

EMG 17-OV-120AC/240AC/3

Order No.: 2954277

The illustration shows version EMG 17-OV, with AC voltage output, max. 3 A



<http://eshop.phoenixcontact.de/phoenix/treeViewClick.do?UID=2954277>

Power optocoupler, with light indicator and protection circuits in the input and output circuits, input: 120 V AC, output: 48-280 V AC/ max. 3 A



Commercial data	
GTIN (EAN)	
Note	Made-to-order
sales group	G112
Pack	10 pcs.
Customs tariff	85364900
Catalog page information	Page 131 (IF-2009)

Product notes

WEEE/RoHS-compliant since:
08/10/2006

<http://www.download.phoenixcontact.com>
 Please note that the data given here has been taken from the online catalog. For comprehensive information and data, please refer to the user documentation. The General Terms and Conditions of Use apply to Internet downloads.

Technical data	
Input data	
Nominal input voltage U_N	120 V AC
Input voltage range in reference to U_N	0.8 ... 1.2
Switching threshold "0" signal in reference to U_N	≤ 0.4

EMG 17-OV-120AC/240AC/3 Order No.: 2954277

<http://eshop.phoenixcontact.de/phoenix/treeViewClick.do?UID=2954277>

Switching threshold "1" signal in reference to U_N	≥ 0.8
Typical input current at U_N	3.2 mA
Typical response time	10 ms
Typical turn-off time	10 ms
Operating voltage display	Yellow LED
Type of protection	Protection against polarity reversal
	Surge protection
Protective circuit/component	Polarity protection diode
	Varistor
Transmission frequency	10 Hz

Output data

Output nominal voltage	240 V AC
Output nominal voltage range	48 V AC ... 280 V AC (50 Hz ... 60 Hz)
Limiting continuous current	3 A (see derating curve)
Min. load current	50 mA
Leakage current	4 mA (in off state)
Surge current	160 A (t = 10 ms)
Max. load value	128 A ² s (I ² x t where t = 10 ms)
Peak offstate voltage	600 V (Periodic peak reverse voltage)
Voltage drop at max. limiting continuous current	≤ 1 V
Output circuit	2-wire, floating
Type of protection	RC element
	Surge protection
Protective circuit/component	RC element
	Varistor

Connection data

Type of connection	Screw connection
Stripping length	8 mm
Screw thread	M3
Conductor cross section solid min.	0.2 mm ²
Conductor cross section solid max.	4 mm ²
Conductor cross section stranded min.	0.2 mm ²
Conductor cross section stranded max.	2.5 mm ²
Conductor cross section AWG/kcmil min.	24
Conductor cross section AWG/kcmil max	12

EMG 17-OV-120AC/240AC/3 Order No.: 2954277

<http://eshop.phoenixcontact.de/phoenix/treeViewClick.do?UID=2954277>

General data

Width	17.5 mm
Height	75 mm
Depth	102 mm
Test voltage input/output	3.5 kV AC
Ambient temperature (operation)	-20 °C ... 60 °C
Ambient temperature (storage/transport)	-20 °C ... 70 °C
Mounting position	Horizontal
Assembly instructions	In rows with zero spacing
Operating mode	100% operating factor
Degree of protection	IP20
Inflammability class in acc. with UL 94 (housing)	V0
Standards/regulations	IEC 60664
	EN 50178
	IEC 62103
Rated surge voltage / insulation	Basic insulation
Pollution degree	2
Surge voltage category	III

Certificates / Approvals



Certification

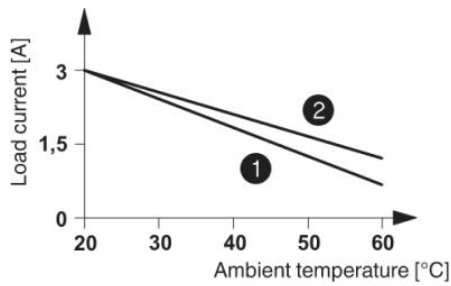
GOST

EMG 17-OV-120AC/240AC/3 Order No.: 2954277

<http://eshop.phoenixcontact.de/phoenix/treeViewClick.do?UID=2954277>

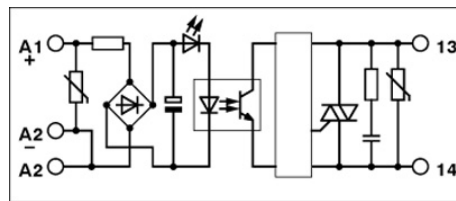
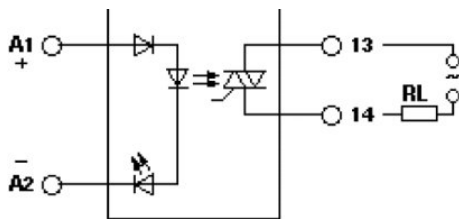
Diagrams/Drawings

Diagram



- ① In rows with zero spacing
- ② stand-alone device

Circuit diagram



EMG 17-OV-120AC/240AC/3 Order No.: 2954277

<http://eshop.phoenixcontact.de/phoenix/treeViewClick.do?UID=2954277>

Address

PHOENIX CONTACT Deutschland GmbH
Flachmarktstr. 8
32825 Blomberg, Germany
Phone +49 5235 3 12000
Fax +49 5235 3 41200
<http://www.phoenixcontact.de>



© 2011 Phoenix Contact
Technical modifications reserved;