

Excellent Integrated System Limited

Stocking Distributor

Click to view price, real time Inventory, Delivery & Lifecycle Information:

[Phoenix Contact](#)
[2954976](#)

For any questions, you can email us directly:

sales@integrated-circuit.com



Extract from the online catalog

EMG 45-NZG/G12/SI

Order No.: 2954976




<http://eshop.phoenixcontact.de/phoenix/treeViewClick.do?UID=2954976>

Voltage regulator module with fixed-voltage regulator, input 16 V-21 V AC/19 V-30 V DC, output 12 V DC/1 A



Commercial data

GTIN (EAN)	 4 017918 117863
Note	Made-to-order
sales group	H093
Pack	1 pcs.
Customs tariff	85044082

Product notes

WEEE/RoHS-compliant since:
10/26/2006



<http://www.download.phoenixcontact.com>
Please note that the data given here has been taken from the online catalog. For comprehensive information and data, please refer to the user documentation. The General Terms and Conditions of Use apply to Internet downloads.

Technical data

Input data

Nominal input voltage	18 V AC 10%
	19 V DC ... 25 V DC

EMG 45-NZG/G12/SI Order No.: 2954976

<http://eshop.phoenixcontact.de/phoenix/treeViewClick.do?UID=2954976>

AC frequency range	60 Hz ... 50 Hz
Nominal power consumption	Approx. 41 VA
Input fuse	1.25 A (normal-blow (5 x 20))

Output data

Nominal output voltage	12 V DC $\pm 4\%$
Output current	1 A
Residual ripple	$\leq 150 \text{ mV}_{PP}$
Type of protection	Thermo-electronic disconnect
Protective circuit/component	Varistor

General data

Width	45 mm
Height	86 mm
Depth	75 mm
Net weight	178 g
Operating voltage display	Green LED
Operating mode	100% operating factor
Degree of protection	IP20
Ambient temperature (operation)	0 °C ... 55 °C
Mounting position	Vertical, horizontal
Assembly instructions	Can be aligned with spacing = 5 mm

Connection data, input

Type of connection	Screw connection
Conductor cross section solid min.	0.2 mm ²
Conductor cross section solid max.	4 mm ²
Conductor cross section stranded min.	0.2 mm ²
Conductor cross section stranded max.	2.5 mm ²
Conductor cross section AWG/kcmil min.	24
Conductor cross section AWG/kcmil max	14
Stripping length	8 mm
Screw thread	M3

Connection data, output

Type of connection	Screw connection
Conductor cross section solid min.	0.2 mm ²

EMG 45-NZG/G12/SI Order No.: 2954976

<http://eshop.phoenixcontact.de/phoenix/treeViewClick.do?UID=2954976>

Conductor cross section solid max.	4 mm ²
Conductor cross section stranded min.	0.2 mm ²
Conductor cross section stranded max.	2.5 mm ²
Conductor cross section AWG/kcmil min.	24
Conductor cross section AWG/kcmil max	14
Stripping length	8 mm

Certificates / Approvals



Certification

GOST

Accessories

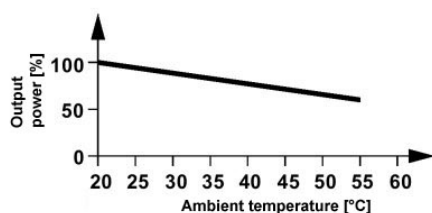
Item	Designation	Description
------	-------------	-------------

Marking

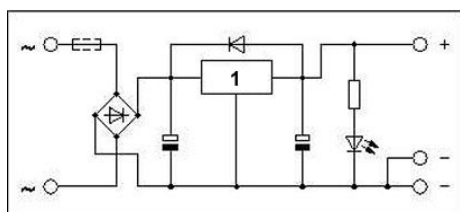
2947035	EMG-GKS 12	Equipment marker, width 12 mm
---------	------------	-------------------------------

Diagrams/Drawings

Diagram



Circuit diagram



1 = regulator

EMG 45-NZG/G12/SI Order No.: 2954976

<http://eshop.phoenixcontact.de/phoenix/treeViewClick.do?UID=2954976>

Address

PHOENIX CONTACT Deutschland GmbH
Flachsmarktstr. 8
32825 Blomberg, Germany
Phone +49 5235 3 12000
Fax +49 5235 3 41200
<http://www.phoenixcontact.de>



© 2011 Phoenix Contact
Technical modifications reserved;