

Excellent Integrated System Limited

Stocking Distributor

Click to view price, real time Inventory, Delivery & Lifecycle Information:

[Phoenix Contact](#)
[1909838](#)

For any questions, you can email us directly:

sales@integrated-circuit.com

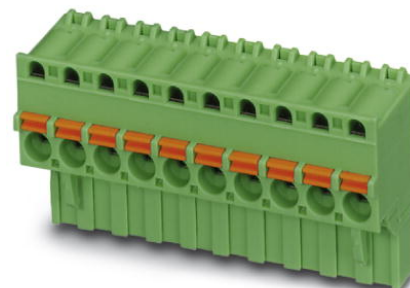


Extract from the online catalog

FKCVR 2,5/14-ST

Order No.: 1909838

The figure shows a 10-position version of the product



<http://eshop.phoenixcontact.de/phoenix/treeViewClick.do?UID=1909838>

Plug component, Nominal current: 12 A, Rated voltage (III/2): 320 V, Number of positions: 14, Pitch: 5 mm, Color: green, Metal surface: Sn

Commercial data

| | |
|--------------------------|--|
| GTIN (EAN) |  4 017918 174613 |
| Note | Made-to-order |
| sales group | E111 |
| Pack | 50 pcs. |
| Customs tariff | 85366990 |
| Catalog page information | Page 216 (CC-2009) |

Product notes

WEEE/RoHS-compliant since:
01/01/2003



<http://www.download.phoenixcontact.com>
Please note that the data given here has been taken from the online catalog. For comprehensive information and data, please refer to the user documentation. The General Terms and Conditions of Use apply to Internet downloads.

Technical data

Dimensions / positions

| | |
|---------------------|-------|
| Pitch | 5 mm |
| Dimension a | 65 mm |
| Number of positions | 14 |

FKCVR 2,5/14-ST Order No.: 1909838

<http://eshop.phoenixcontact.de/phoenix/treeViewClick.do?UID=1909838>
Technical data

| | |
|-------------------------------------|---------------------|
| Range of articles | FKCVR 2,5/...-ST |
| Insulating material group | I |
| Rated surge voltage (III/3) | 4 kV |
| Rated surge voltage (III/2) | 4 kV |
| Rated surge voltage (II/2) | 4 kV |
| Rated voltage (III/2) | 320 V |
| Rated voltage (II/2) | 630 V |
| Connection in acc. with standard | EN-VDE |
| Nominal current I_N | 12 A |
| Nominal voltage U_N | 250 V |
| Nominal cross section | 2.5 mm ² |
| Maximum load current | 12 A |
| Insulating material | PA |
| Inflammability class acc. to UL 94 | V0 |
| Internal cylindrical gage | A2 |
| Stripping length | 10 mm |
| Nominal voltage, UL/CUL Use Group B | 250 V |
| Nominal current, UL/CUL Use Group B | 10 A |
| Nominal voltage, UL/CUL Use Group D | 300 V |
| Nominal current, UL/CUL Use Group D | 10 A |

Connection data

| | |
|--|----------------------|
| Conductor cross section solid min. | 0.2 mm ² |
| Conductor cross section solid max. | 2.5 mm ² |
| Conductor cross section stranded min. | 0.2 mm ² |
| Conductor cross section stranded max. | 2.5 mm ² |
| Conductor cross section stranded, with ferrule without plastic sleeve min. | 0.25 mm ² |
| Conductor cross section stranded, with ferrule without plastic sleeve max. | 2.5 mm ² |
| Conductor cross section stranded, with ferrule with plastic sleeve min. | 0.25 mm ² |
| Conductor cross section stranded, with ferrule with plastic sleeve max. | 2.5 mm ² |
| Conductor cross section AWG/kcmil min. | 24 |
| Conductor cross section AWG/kcmil max | 12 |

FKCVR 2,5/14-ST Order No.: 1909838
<http://eshop.phoenixcontact.de/phoenix/treeViewClick.do?UID=1909838>

| | |
|---|---------------------|
| 2 conductors with same cross section, stranded, TWIN ferrules with plastic sleeve, min. | 0.5 mm ² |
| 2 conductors with same cross section, stranded, TWIN ferrules with plastic sleeve, max. | 1.5 mm ² |
| Minimum AWG according to UL/CUL | 26 |
| Maximum AWG according to UL/CUL | 12 |

Certificates / Approvals



Certification CB, CUL, GOST, UL, VDE-PZI

Accessories

| Item | Designation | Description |
|-----------------|----------------|--|
| Assembly | | |
| 1876880 | STZ 8-FKC-5,08 | Strain relief for snapping into the latching chambers of the plug components, 8-pos. |
| 1876877 | STZ 4-FKC-5,08 | Strain relief for snapping into the latching chambers of the plugs, 4-pos. |

Marking

| | | |
|---------|-----------------------|---|
| 0804183 | SK 5/3,8:FORTL.ZAHLEN | Marker card, printed horizontally, self-adhesive, 12 identical decades marked 1-10, 11-20 etc. up to 91-(99)100, sufficient for 120 terminal blocks |
|---------|-----------------------|---|

Plug/Adapter

| | | |
|---------|---------|---|
| 1734634 | CP-MSTB | Keying profile, is inserted into the slot on the plug or inverted header, red insulating material |
| 0201744 | MPS-MT | Test plugs |
| 0201647 | RPS | Reducing plug, Color: gray |

Tools

| | | |
|---------|-------------|--|
| 1205053 | SZS 0,6X3,5 | Actuation tool, for ST terminal blocks, insulated, also suitable for use as a bladed screwdriver, size: 0.6 x 3.5 x 100 mm, 2-component grip, with non-slip grip |
|---------|-------------|--|

FKCVR 2,5/14-ST Order No.: 1909838

<http://eshop.phoenixcontact.de/phoenix/treeViewClick.do?UID=1909838>
Additional products

| Item | Designation | Description |
|----------------|-------------------|--|
| General | | |
| 0707219 | DFK-MSTB 2,5/14-G | Plug component, Nominal current: 12 A, Rated voltage (III/2): 320 V, Number of positions: 14, Pitch: 5 mm, Color: green, Metal surface: Sn, Assembly: Direct mounting, Accessory order no. 5030172 can only be used in conjunction with MSTB 2,5/...ST and MSTBT 2,5/...ST. |
| 1899964 | EMSTBA 2,5/14-G | Header, Nominal current: 12 A, Rated voltage (III/2): 320 V, Number of positions: 14, Pitch: 5 mm, Color: green, Metal surface: Sn, Assembly: Press-in |
| 1914975 | EMSTBVA 2,5/14-G | Header, Nominal current: 12 A, Rated voltage (III/2): 320 V, Number of positions: 14, Pitch: 5 mm, Color: green, Metal surface: Sn, Assembly: Press-in |
| 1762813 | MDSTB 2,5/14-G1 | Header, Nominal current: 10 A, Rated voltage (III/2): 320 V, Number of positions: 14, Pitch: 5 mm, Color: green, Metal surface: Sn, Assembly: Soldering, In combination with MVSTB or FKCV plug components, both an MVSTBW (or FKCVW) and an MVSTBR plug (or FKCVR) must be used. Combination with TMSTBP plug components is not possible! |
| 1762965 | MDSTBV 2,5/14-G1 | Header, Nominal current: 10 A, Rated voltage (III/2): 320 V, Number of positions: 14, Pitch: 5 mm, Color: green, Metal surface: Sn, Assembly: Soldering, In combination with MVSTB or FKCV plug components, both an MVSTBW (or FKCVW) and an MVSTBR plug (or FKCVR) must be used. Combination with TMSTBP plug components is not possible! |
| 1754672 | MSTB 2,5/14-G | Header, Nominal current: 12 A, Rated voltage (III/2): 320 V, Number of positions: 14, Pitch: 5 mm, Color: green, Metal surface: Sn, Assembly: Soldering |
| 1768309 | MSTB 2,5/14-G-LA | Header, Nominal current: 12 A, Rated voltage (III/2): 320 V, Number of positions: 14, Pitch: 5 mm, Color: green, Metal surface: Sn, Assembly: Soldering |
| 1757585 | MSTBA 2,5/14-G | Header, Nominal current: 12 A, Rated voltage (III/2): 320 V, Number of positions: 14, Pitch: 5 mm, Color: green, Metal surface: Sn, Assembly: Soldering |
| 1770601 | MSTBA 2,5/14-G-LA | Header, Nominal current: 12 A, Rated voltage (III/2): 320 V, Number of positions: 14, Pitch: 5 mm, Color: green, Metal surface: Sn, Assembly: Soldering |
| 1753673 | MSTBV 2,5/14-G | Header, Nominal current: 12 A, Rated voltage (III/2): 320 V, Number of positions: 14, Pitch: 5 mm, Color: green, Metal surface: Sn, Assembly: Soldering |
| 1755626 | MSTBVA 2,5/14-G | Header, Nominal current: 12 A, Rated voltage (III/2): 320 V, Number of positions: 14, Pitch: 5 mm, Color: green, Metal surface: Sn, Assembly: Soldering |

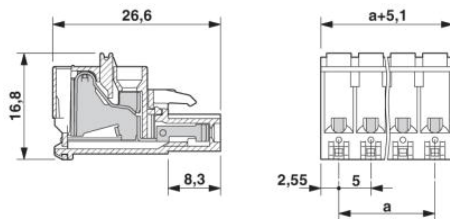
FKCVR 2,5/14-ST Order No.: 1909838

<http://eshop.phoenixcontact.de/phoenix/treeViewClick.do?UID=1909838>

| | | |
|---------|-----------------|---|
| 1735992 | MSTBW 2,5/14-G | Header, Nominal current: 12 A, Rated voltage (III/2): 320 V, Number of positions: 14, Pitch: 5 mm, Color: green, Metal surface: Sn, Assembly: Soldering |
| 1769353 | SMSTB 2,5/14-G | Header, Nominal current: 12 A, Rated voltage (III/2): 320 V, Number of positions: 14, Pitch: 5 mm, Color: green, Metal surface: Sn, Assembly: Soldering |
| 1769926 | SMSTBA 2,5/14-G | Header, Nominal current: 12 A, Rated voltage (III/2): 320 V, Number of positions: 14, Pitch: 5 mm, Color: green, Metal surface: Sn, Assembly: Soldering |

Diagrams/Drawings

Dimensioned drawing



FKCVR 2,5/14-ST Order No.: 1909838

<http://eshop.phoenixcontact.de/phoenix/treeViewClick.do?UID=1909838>

Address

PHOENIX CONTACT Deutschland GmbH
Flachsmarktstr. 8
32825 Blomberg, Germany
Phone +49 5235 3 12000
Fax +49 5235 3 41200
<http://www.phoenixcontact.de>



© 2011 Phoenix Contact
Technical modifications reserved;