

Excellent Integrated System Limited

Stocking Distributor

Click to view price, real time Inventory, Delivery & Lifecycle Information:

[Phoenix Contact](#)
[2304597](#)

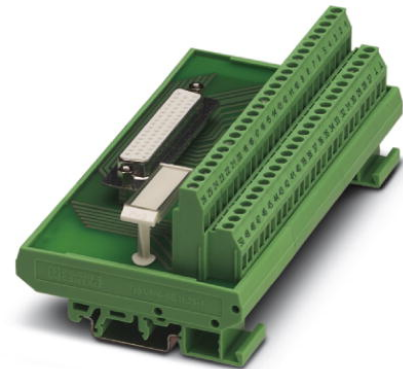
For any questions, you can email us directly:
sales@integrated-circuit.com



Extract from the online catalog

FLKM-D50 SUB/B/MKKDS

Order No.: 2304597



<http://eshop.phoenixcontact.de/phoenix/treeViewClick.do?UID=2304597>

VARIOFACE module, with screw connection and D-Subminiature socket strip, for mounting on NS 35/7.5 or NS 32, 50-pos.



Commercial data	
GTIN (EAN)	4 017918 973810
sales group	I011
Pack	1 pcs.
Customs tariff	85369010
Catalog page information	Page 248 (IF-2007)

Product notes

WEEE/RoHS-compliant since:
05/07/2008

<http://www.download.phoenixcontact.com>
 Please note that the data given here has been taken from the online catalog. For comprehensive information and data, please refer to the user documentation. The General Terms and Conditions of Use apply to Internet downloads.

Technical data	
General data	
Nominal voltage U_N	125 V AC/DC
Max. current carrying capacity per branch	2.5 A
	1.5 A (with even load on all branches)
Max. total current of voltage supply	2.5 A (per contact)

FLKM-D50 SUB/B/MKKDS Order No.: 2304597

<http://eshop.phoenixcontact.de/phoenix/treeViewClick.do?UID=2304597>

Number of positions	50
Width	146.3 mm
Height	77 mm
Depth	58.5 mm
Status display	No
Ambient temperature (operation)	-20 °C ... 50 °C
Ambient temperature (storage/transport)	-20 °C ... 70 °C
Test voltage	800 V (50 Hz, 1 min.)
Test voltage contact/contact	0.8 kV AC
Mounting position	Any
Assembly instructions	In rows with zero spacing
Standards/regulations	IEC 60664
	DIN EN 50178
	IEC 62103
Pollution degree	2
Surge voltage category	II

Connection data

Connection 1	PCB connection
Connection in acc. with standard	IEC / EN
Type of connection	Screw connection
Conductor cross section solid min.	0.2 mm ²
Conductor cross section solid max.	4 mm ²
Conductor cross section stranded min.	0.2 mm ²
Conductor cross section stranded max.	2.5 mm ²
Conductor cross section AWG/kcmil min.	24
Conductor cross section AWG/kcmil max	12
Stripping length	8 mm
Screw thread	M3
Connection 2	D-SUB connection
Type of connection	Pluggable

Certificates / Approvals


FLKM-D50 SUB/B/MKKDS Order No.: 2304597
<http://eshop.phoenixcontact.de/phoenix/treeViewClick.do?UID=2304597>

Certification CUL, UL

Accessories

Item	Designation	Description
Cable/conductor		
2302434	CABLE D-SUB-S-S-S/.../.../...	Shielded round cable, assembled with two D-SUB male connectors, variable cable length
2302340	CABLE D-SUB-S/.../.../...	Shielded round cable, assembled with one D-SUB male and one female connector, variable cable length
2926645	CABLE-D-50SUB/M/OE/0,25/S/0,5M	Shielded cable with a 50-pos. D-SUB pin strip and one open end. The individual wires are labeled 1 to 50 and fitted with ferrules. The braided shield is routed to a separate cable end. Cable length: 0.5 m.
2926658	CABLE-D-50SUB/M/OE/0,25/S/1,0M	Shielded cable with a 50-pos. D-SUB pin strip and one open end. The individual wires are labeled 1 to 50 and fitted with ferrules. The braided shield is routed to a separate cable end. Cable length: 1 m.
2926661	CABLE-D-50SUB/M/OE/0,25/S/1,5M	Shielded cable with a 50-pos. D-SUB pin strip and one open end. The individual wires are labeled 1 to 50 and fitted with ferrules. The braided shield is routed to a separate cable end. Cable length: 1.5 m.
2926674	CABLE-D-50SUB/M/OE/0,25/S/2,0M	Shielded cable with a 50-pos. D-SUB pin strip and one open end. The individual wires are labeled 1 to 50 and fitted with ferrules. The braided shield is routed to a separate cable end. Cable length: 2 m.
2926687	CABLE-D-50SUB/M/OE/0,25/S/3,0M	Shielded cable with a 50-pos. D-SUB pin strip and one open end. The individual wires are labeled 1 to 50 and fitted with ferrules. The braided shield is routed to a separate cable end. Cable length: 3 m.
2926690	CABLE-D-50SUB/M/OE/0,25/S/4,0M	Shielded cable with a 50-pos. D-SUB pin strip and one open end. The individual wires are labeled 1 to 50 and fitted with ferrules. The braided shield is routed to a separate cable end. Cable length: 4 m.
2926700	CABLE-D-50SUB/M/OE/0,25/S/6,0M	Shielded cable with a 50-pos. D-SUB pin strip and one open end. The individual wires are labeled 1 to 50 and fitted with ferrules. The braided shield is routed to a separate cable end. Cable length: 6 m.
2302269	CABLE-D50SUB/B/S/ 50/KONFEK/S	Round shielded cable set, with 50-pos. D-SUB female and male connectors, cable length: 0.5 m
2302272	CABLE-D50SUB/B/S/100/KONFEK/S	Round shielded cable set, with 50-pos. D-SUB female and male connectors, cable length: 1 m
2302285	CABLE-D50SUB/B/S/150/KONFEK/S	Round shielded cable set, with 50-pos. D-SUB female and male connectors, cable length: 1.5 m

FLKM-D50 SUB/B/MKKDS Order No.: 2304597

<http://eshop.phoenixcontact.de/phoenix/treeViewClick.do?UID=2304597>

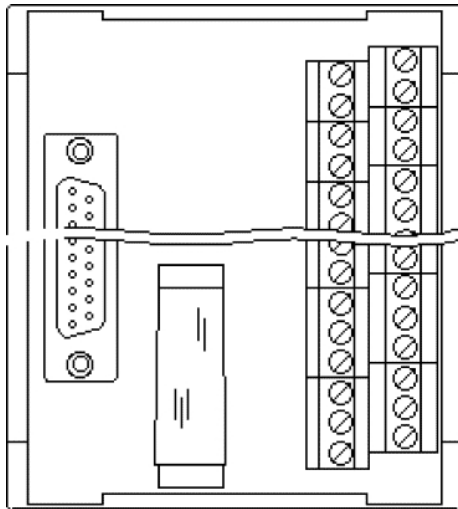
2302298	CABLE-D50SUB/B/S/200/ KONFEK/S	Round shielded cable set, with 50-pos. D-SUB female and male connectors, cable length: 2 m
2302308	CABLE-D50SUB/B/S/300/ KONFEK/S	Round shielded cable set, with 50-pos. D-SUB female and male connectors, cable length: 3 m
2302311	CABLE-D50SUB/B/S/400/ KONFEK/S	Round shielded cable set, with 50-pos. D-SUB female and male connectors, cable length: 4 m
2302324	CABLE-D50SUB/B/S/600/ KONFEK/S	Round shielded cable set, with 50-pos. D-SUB female and male connectors, cable length: 6 m

General

2900913	CABLE-D-50SUB-M-OE-0,25- S/...	Shielded cable with a 50-pos. D-SUB pin strip and one open end. The individual wires are labeled 1 to 50 and fitted with ferrules. The braided shield is routed to a separate cable end. Cable length: variable.
---------	-----------------------------------	--

Diagrams/Drawings

Schematic diagram



FLKM-D50 SUB/B/MKKDS Order No.: 2304597

<http://eshop.phoenixcontact.de/phoenix/treeViewClick.do?UID=2304597>

Address

PHOENIX CONTACT Deutschland GmbH
Flachsmarktstr. 8
32825 Blomberg, Germany
Phone +49 5235 3 12000
Fax +49 5235 3 41200
<http://www.phoenixcontact.de>



© 2011 Phoenix Contact
Technical modifications reserved;