

Excellent Integrated System Limited

Stocking Distributor

Click to view price, real time Inventory, Delivery & Lifecycle Information:

[Phoenix Contact](#)
[1709173](#)

For any questions, you can email us directly:

sales@integrated-circuit.com

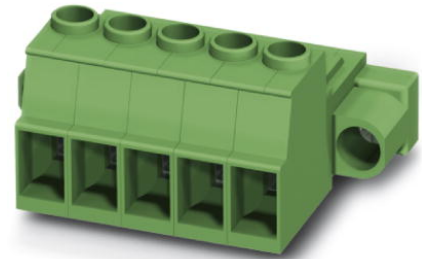


Extract from the online catalog

IPC 5/ 4-STF-7,62


Order No.: 1709173

The figure shows a 5-pos. version of the product



<http://eshop.phoenixcontact.de/phoenix/treeViewClick.do?UID=1709173>

Plug component, Nominal current: 41 A, Rated voltage (III/2): 1000 V, Number of positions: 4, Pitch: 7.62 mm, Color: green, Metal surface: Sn

| Commercial data | |
|--------------------------|--|
| GTIN (EAN) |  4 046356 075718 |
| sales group | E522 |
| Pack | 50 pcs. |
| Customs tariff | 85366990 |
| Catalog page information | Page 381 (CC-2009) |

Product notes

WEEE/RoHS-compliant since:
05/17/2005



<http://www.download.phoenixcontact.com>
Please note that the data given here has been taken from the online catalog. For comprehensive information and data, please refer to the user documentation. The General Terms and Conditions of Use apply to Internet downloads.

Technical data

| Dimensions / positions | |
|------------------------|----------|
| Pitch | 7.62 mm |
| Dimension a | 22.86 mm |
| Number of positions | 4 |
| Screw thread | M3 |

IPC 5/ 4-STF-7,62 Order No.: 1709173

<http://eshop.phoenixcontact.de/phoenix/treeViewClick.do?UID=1709173>

| | |
|------------------------|--------|
| Tightening torque, min | 0.7 Nm |
| Tightening torque max | 0.8 Nm |

Technical data

| | |
|-------------------------------------|--------------------|
| Range of articles | IPC 5/...-STF |
| Insulating material group | I |
| Rated surge voltage (III/3) | 8 kV |
| Rated surge voltage (III/2) | 8 kV |
| Rated surge voltage (II/2) | 6 kV |
| Rated voltage (III/2) | 1000 V |
| Rated voltage (II/2) | 1000 V |
| Connection in acc. with standard | EN-VDE |
| Nominal current I_N | 41 A |
| Nominal voltage U_N | 1000 V |
| Nominal cross section | 10 mm ² |
| Maximum load current | 41 A |
| Insulating material | PA |
| Inflammability class acc. to UL 94 | V0 |
| Stripping length | 10 mm |
| Nominal voltage, UL/CUL Use Group B | 600 V |
| Nominal current, UL/CUL Use Group B | 41 A |
| Nominal voltage, UL/CUL Use Group C | 600 V |
| Nominal current, UL/CUL Use Group C | 41 A |

Connection data

| | |
|--|----------------------|
| Conductor cross section solid min. | 0.2 mm ² |
| Conductor cross section solid max. | 10 mm ² |
| Conductor cross section stranded min. | 0.2 mm ² |
| Conductor cross section stranded max. | 6 mm ² |
| Conductor cross section stranded, with ferrule without plastic sleeve min. | 0.25 mm ² |
| Conductor cross section stranded, with ferrule without plastic sleeve max. | 6 mm ² |
| Conductor cross section stranded, with ferrule with plastic sleeve min. | 0.25 mm ² |
| Conductor cross section stranded, with ferrule with plastic sleeve max. | 4 mm ² |
| Conductor cross section AWG/kcmil min. | 24 |

IPC 5/ 4-STF-7,62 Order No.: 1709173

<http://eshop.phoenixcontact.de/phoenix/treeViewClick.do?UID=1709173>

| | |
|---|----------------------|
| Conductor cross section AWG/kcmil max | 10 |
| 2 conductors with same cross section, solid min. | 0.2 mm ² |
| 2 conductors with same cross section, solid max. | 2.5 mm ² |
| 2 conductors with same cross section, stranded min. | 0.2 mm ² |
| 2 conductors with same cross section, stranded max. | 4 mm ² |
| 2 conductors with same cross section, stranded, ferrules without plastic sleeve, min. | 0.25 mm ² |
| 2 conductors with same cross section, stranded, ferrules without plastic sleeve, max. | 1.5 mm ² |
| 2 conductors with same cross section, stranded, TWIN ferrules with plastic sleeve, min. | 0.25 mm ² |
| 2 conductors with same cross section, stranded, TWIN ferrules with plastic sleeve, max. | 2.5 mm ² |
| Minimum AWG according to UL/CUL | 24 |
| Maximum AWG according to UL/CUL | 8 |

Certificates / Approvals

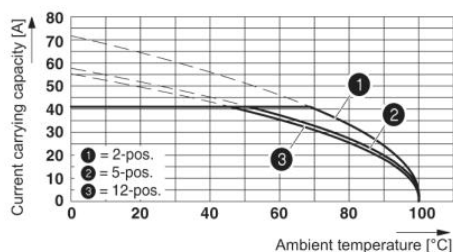


Certification

CUL, UL

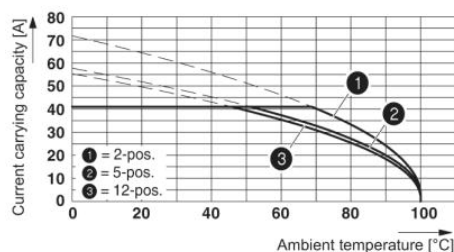
Diagrams/Drawings

Diagram



Derating curve for: IPC 5/...-ST-7.62 with PC 5/...-ST-7.62

Conductor cross section = 10 mm²

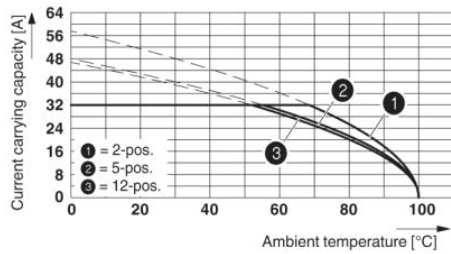


Derating curve for: IPC 5/...-ST-7.62 with IPC 5/...-G-7.62

Conductor cross section = 10 mm²

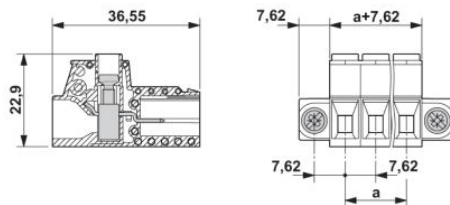
IPC 5/ 4-STF-7,62 Order No.: 1709173

<http://eshop.phoenixcontact.de/phoenix/treeViewClick.do?UID=1709173>



Derating curve for: IPC 5/...-ST-7,62 with IPC 5/....-G-7,62
 Conductor cross section 6 mm²

Dimensioned drawing



IPC 5/ 4-STF-7,62 Order No.: 1709173

<http://eshop.phoenixcontact.de/phoenix/treeViewClick.do?UID=1709173>

Address

PHOENIX CONTACT Deutschland GmbH
Flachsmarktstr. 8
32825 Blomberg, Germany
Phone +49 5235 3 12000
Fax +49 5235 3 41200
<http://www.phoenixcontact.de>



© 2011 Phoenix Contact
Technical modifications reserved;