

## Excellent Integrated System Limited

Stocking Distributor

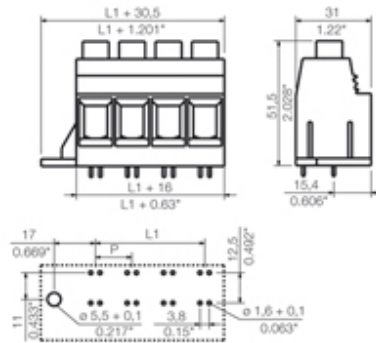
Click to view price, real time Inventory, Delivery & Lifecycle Information:

[Weidmüller](#)  
[1047440000](#)

For any questions, you can email us directly:

[sales@integrated-circuit.com](mailto:sales@integrated-circuit.com)

**LXXX 15.00/01/90FL 4.5SN BK BX**

 View with Tabs | [List View](#)

**General ordering data**

<b>Order No.</b>	1047440000
<b>Part designation</b>	LXXX 15.00/01/90FL 4.5SN BK BX
<b>Version</b>	PCB terminal, Clamping yoke connection, Solder connection, Clamping range, max.: 50 mm <sup>2</sup> , Pitch in mm: 15.00 mm, No. of poles: 1, 90°, Box
<b>GTIN (EAN)</b>	4032248783717
<b>Qty.</b>	20 pc(s).
<b>Packaging</b>	Box

**System parameters**

<b>Product family</b>	System LXXX
<b>Conductor connection system</b>	Clamping yoke connection
<b>Fitted to PCB</b>	Solder connection
<b>Outgoing direction of conductor</b>	90°
<b>Pitch in mm</b>	15 mm
<b>Pitch in inch</b>	0.591 inch
<b>No. of poles</b>	1
<b>Fitted by customer</b>	No
<b>No. of rows</b>	1
<b>Solder pin length</b>	4.5 mm
<b>Diameter of solder eyelet</b>	1.6 mm
<b>Tolerance of the diameter of the solder eyelet</b>	+ 0,1 mm
<b>Number of solder pins per pole</b>	4

<b>Screwdriver blade</b>	1.2 x 6.5
<b>Screwdriver blade standard</b>	DIN 5264
<b>Tightening torque, min.</b>	2.5 Nm
<b>Tightening torque, max.</b>	4 Nm
<b>Clamping screw</b>	M 6
<b>Stripping length</b>	18 mm
<b>L1 in mm</b>	0 mm
<b>L1 in inch</b>	0 inch

**Material data**

<b>Insulating material</b>	Wemid (PA)
<b>Colour</b>	black
<b>Flammability class UL 94</b>	V-0
<b>CTI</b>	≥ 600
<b>Contact material</b>	Copper alloy
<b>Contact surface</b>	tinned
<b>Contact base material</b>	Copper alloy

**Connectable conductors**

<b>Clamping range, min.</b>	0.5 mm <sup>2</sup>
<b>Clamping range, max.</b>	50 mm <sup>2</sup>
<b>Conductor connection cross-section AWG, min.</b>	AWG 20
<b>Conductor connection cross-section AWG, max.</b>	AWG 1
<b>Solid, min. H05(07) V-U</b>	0.5 mm <sup>2</sup>
<b>Solid, max. H05(07) V-U</b>	16 mm <sup>2</sup>
<b>Stranded, max. H07V-R</b>	50 mm <sup>2</sup>
<b>Stranded, min. H07V-R</b>	6 mm <sup>2</sup>
<b>Flexible, min. H05(07) V-K</b>	0.5 mm <sup>2</sup>
<b>Flexible, max. H05(07) V-K</b>	35 mm <sup>2</sup>
<b>w. wire end ferrule, DIN 46228 pt 1, min</b>	0.5 mm <sup>2</sup>
<b>with wire end ferrule, DIN 46228 pt 1, max.</b>	35 mm <sup>2</sup>
<b>w. plastic collar ferrule, DIN 46228 pt 4, min.</b>	0.5 mm <sup>2</sup>
<b>with plastic collar ferrule, DIN 46228 pt 4, max.</b>	35 mm <sup>2</sup>

**DIN IEC rating data**

Rated current, min. No. of poles (Tu=20°C)	150 A
Rated current, no. of poles (Tu=40°C), min.	150 A
Rated voltage for overvoltage class/pollution severity II/2	1,000 V
Rated voltage for overvoltage class/pollution severity III/2	1,000 V
Rated voltage at overvoltage category/pollution degree III/3	1,000 V
Rated impulse withstand voltage for overvoltage class/pollution severity II/2	8 kV
Rated impulse withstand voltage for overvoltage class/pollution severity III/2	8 kV
Rated impulse withstand voltage for overvoltage class/pollution severity III/3	8 kV

**CSA rating data**

Rated voltage (Use group B)	600 V
Rated current (use group B)	127 A
Rated voltage (Use group C)	600 V
Rated current (use group C)	127 A
Rated voltage (use group D)	600 V
Rated current (use group D)	5 A
Wire cross-section, AWG, min.	AWG 20
Wire cross-section, AWG, max.	AWG 1

**UL 1059 rating data**

Rated voltage (use group B)	600 V
Rated current (use group B)	127 A
Rated voltage (use group C)	600 V
Rated current (use group C)	127 A
Rated voltage (use group D)	600 V

<b>Rated current (use group D)</b>	5 A
<b>Wire cross-section, AWG, min.</b>	AWG 20
<b>Wire cross-section, AWG, max.</b>	AWG 1

**Approvals**

Approvals institutes



**Classifications**

eClass 6.0 27-26-11-01

**Notes**

- Additional colours on request
- Rated current related to rated cross-section and min. No. of poles.
- Wire end ferrule without plastic collar to DIN 46228 pt 1
- Wire end ferrule with plastic collar to DIN 46228 pt 4
- P on drg. = pitch
- Rated data refer only to the component itself. Clearance and creepage distances to other components are to be designed in accordance with the relevant application standards.
- IP 20 from 16 mm<sup>2</sup> to 50 mm<sup>2</sup>

**Notes**

**Similar products**



Colour	No. of poles	Solder pin length	Order No.	Part designation	Version
pebble grey	1	4.5 mm	1047520000	LXXX 15.00/01/90FL 4.5SN GY BX	PCB terminal, Clamping yoke connection, Solder connection, Clamping range, max.: 50 mm <sup>2</sup> , Pitch in mm: 15.00 mm, No. of poles: 1, 90°, Box

[Add to Inquiry list](#) [PDF Datasheet](#)

Colour	No. of poles	Solder pin length	Order No.	Part designation	Version
--------	--------------	-------------------	-----------	------------------	---------

<input type="text" value="pebble grey"/>	<input type="text" value="2"/>	<input type="text" value="4.5 mm"/>	<input type="text" value="1047530000"/>	<input type="text" value="LXXX 15.00/02/90FL 4.5SN GY BX"/>	<input type="text" value="PCB terminal, Clamping yoke connection, Solder connection, Clamping range, max.: 50 mm², Pitch in mm: 15.00 mm, No. of poles: 2, 90°, Box"/>
--	--------------------------------	-------------------------------------	---	---	--



pebble grey

2

4.5 mm

1047530000

LXXX  
15.00/02/90FL  
4.5SN GY BX

PCB terminal, Clamping yoke connection, Solder connection, Clamping range, max.: 50 mm², Pitch in mm: 15.00 mm, No. of poles: 2, 90°, Box

[Add to Inquiry list](#)

[PDF Datasheet](#)

pebble grey

3

4.5 mm

1047540000

LXXX  
15.00/03/90FL  
4.5SN GY BX

PCB terminal, Clamping yoke connection, Solder connection, Clamping range, max.: 50 mm², Pitch in mm: 15.00 mm, No. of poles: 3, 90°, Box

[Add to Inquiry list](#)

[PDF Datasheet](#)



pebble grey

4

4.5 mm

1047590000

LXXX  
15.00/04/90FL  
4.5SN OR BX

PCB terminal, Clamping yoke connection, Solder connection, Clamping range, max.: 50 mm², Pitch in mm: 15.00 mm, No. of poles: 4, 90°, Box

[Add to Inquiry list](#)

[PDF Datasheet](#)

