

Excellent Integrated System Limited

Stocking Distributor

Click to view price, real time Inventory, Delivery & Lifecycle Information:

[Phoenix Contact](#)
[3042638](#)

For any questions, you can email us directly:

sales@integrated-circuit.com

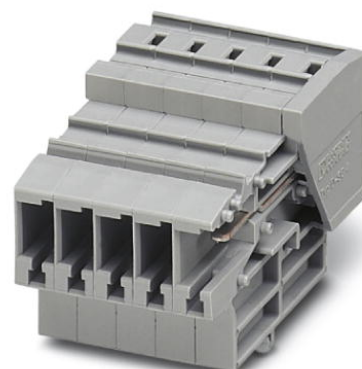


Extract from the online catalog

SC 4-RZ/ 3

Order No.: 3042638

The illustration shows the 5-position version of the product



<http://eshop.phoenixcontact.de/phoenix/treeViewClick.do?UID=3042638>

Coupling, Type of connection: Spring-cage connection, Spring-cage connection, Number of positions: 3, Cross section: 0.08 mm² - 6 mm², AWG 28 - 12, Width: 18.6 mm, Height: 31 mm, Color: gray, Mounting type: On mounting plate

Commercial data	
GTIN (EAN)	 4 046356 012775
sales group	A672
Pack	50 pcs.
Customs tariff	85366990
Catalog page information	Page 269 (CL-2009)

Product notes

WEEE/RoHS-compliant since:
01/01/2005



<http://www.download.phoenixcontact.com>
Please note that the data given here has been taken from the online catalog. For comprehensive information and data, please refer to the user documentation. The General Terms and Conditions of Use apply to Internet downloads.

Technical data

Dimensions	
Width	18.6 mm
Length	48.6 mm
Height	31 mm

SC 4-RZ/ 3 Order No.: 3042638

<http://eshop.phoenixcontact.de/phoenix/treeViewClick.do?UID=3042638>
Technical data

Maximum load current	32 A (with 6 mm ² conductor cross section)
Rated surge voltage	8 kV
Pollution degree	3
Surge voltage category	III
Insulating material group	I
Connection in acc. with standard	IEC 61984
Nominal current I _N	32 A
Nominal voltage U _N	800 V
Open side panel	ja
Number of positions	3

Connection data

Conductor cross section solid min.	0.08 mm ²
Conductor cross section solid max.	6 mm ²
Conductor cross section stranded min.	0.08 mm ²
Conductor cross section stranded max.	4 mm ²
Conductor cross section AWG/kcmil min.	28
Conductor cross section AWG/kcmil max	12
Conductor cross section stranded, with ferrule without plastic sleeve min.	0.14 mm ²
Conductor cross section stranded, with ferrule without plastic sleeve max.	4 mm ²
Conductor cross section stranded, with ferrule with plastic sleeve min.	0.14 mm ²
Conductor cross section stranded, with ferrule with plastic sleeve max.	4 mm ²
2 conductors with same cross section, stranded, TWIN ferrules with plastic sleeve, min.	0.5 mm ²
2 conductors with same cross section, stranded, TWIN ferrules with plastic sleeve, max.	1 mm ²
Type of connection	Spring-cage connection
Stripping length	10 mm
Internal cylindrical gage	A4

Certificates / Approvals


SC 4-RZ/ 3 Order No.: 3042638

<http://eshop.phoenixcontact.de/phoenix/treeViewClick.do?UID=3042638>

Certification

CUL, GOST, UL

Accessories

Item	Designation	Description
------	-------------	-------------

Assembly

3043831	CZ/2	Strain relief, Number of positions: 2, Color: black
3043307	D-SC 4	End cover, Length: 48.6 mm, Width: 2.2 mm, Color: gray

Plug/Adapter

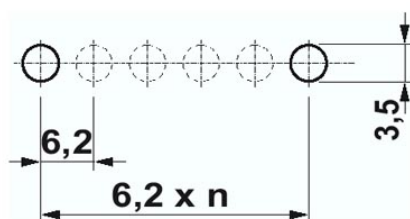
3002885	ISH 4/0,5	Insulating sleeve, Color: gray
3002898	ISH 4/1,0	Insulating sleeve, Color: black
0201702	MPS-IH GN	Insulating sleeve, Color: green
0201676	MPS-IH RD	Insulating sleeve, Color: red
0201744	MPS-MT	Test plugs

Tools

1204517	SZF 1-0,6X3,5	Actuation tool, for ST terminal blocks, also suitable for use as a bladed screwdriver, size: 0.6 x 3.5 x 100 mm, 2-component grip, with non-slip grip
---------	---------------	---

Diagrams/Drawings

Drilling plan/solder pad geometry



Drilling plan SC 4-RZ..., example: 1 x SC 4-RZ/ 6, metal thickness: 0.8-1.5 mm

Circuit diagram



SC 4-RZ/ 3 Order No.: 3042638

<http://eshop.phoenixcontact.de/phoenix/treeViewClick.do?UID=3042638>

Address

PHOENIX CONTACT Deutschland GmbH
Flachsmarktstr. 8
32825 Blomberg, Germany
Phone +49 5235 3 12000
Fax +49 5235 3 41200
<http://www.phoenixcontact.de>



© 2011 Phoenix Contact
Technical modifications reserved;