

Excellent Integrated System Limited

Stocking Distributor

Click to view price, real time Inventory, Delivery & Lifecycle Information:

[3M](#)
[2440-5112TB](#)

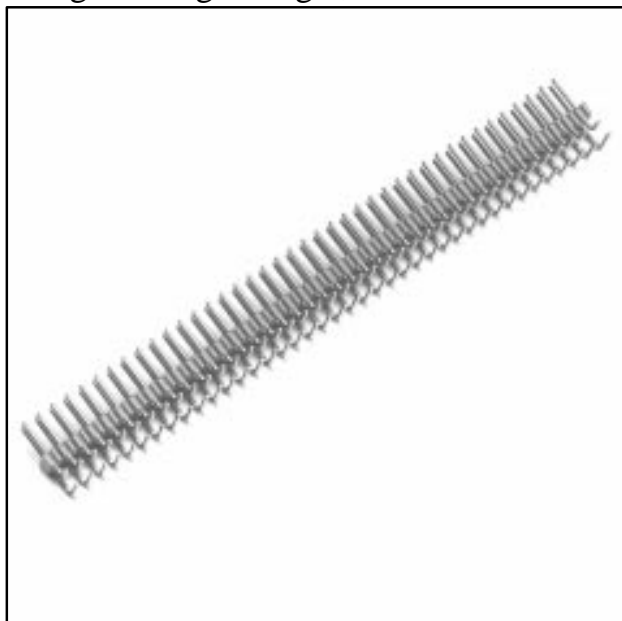
For any questions, you can email us directly:

sales@integrated-circuit.com

.100" and .100" × .100" Pin Strip Header

Straight & Right Angle, Solder Tail

2400 Series



- One and two row versions
- Straight and right angle versions
- Break to length for faster delivery, lower inventory costs, and faster prototyping
- Tapered tip does not cut the socket wipe during insertion, reducing operational failures and repairs
- Solder standoffs facilitate wash of flux residue, reducing costly rework
- Board pin retention feature available

Date Modified: December 28, 1999

TS-0767-03
 Sheet 1 of 3

14

Physical

Insulation

Material: Glass Filled Polyester (PBT)
 Flammability: UL 94V-0
 Color: Gray

Contact

Material: Copper Alloy
 Plating
 Underplate: 100 μ" [2.54 μm] Nickel — QQ-N-290, Class 2
 Wiping Area: 30 μ" [0.76 μm] Gold — MIL-G-45204, Type II, Grade C
 Solder Tails: 200 μ" [5.08 μm] 90/10 Tin Lead — MIL-P-81728

Electrical

Current Rating: 3 A
Insulation Resistance: > 1 × 10⁹ Ω at 500 Vdc
Withstanding Voltage: 1000 Vrms at Sea Level

Environmental

Temperature Rating: -55°C to +105°C

UL File No.: E68080

3M Interconnect Solutions Division

6801 River Place Blvd.
 Austin, TX 78726-9000

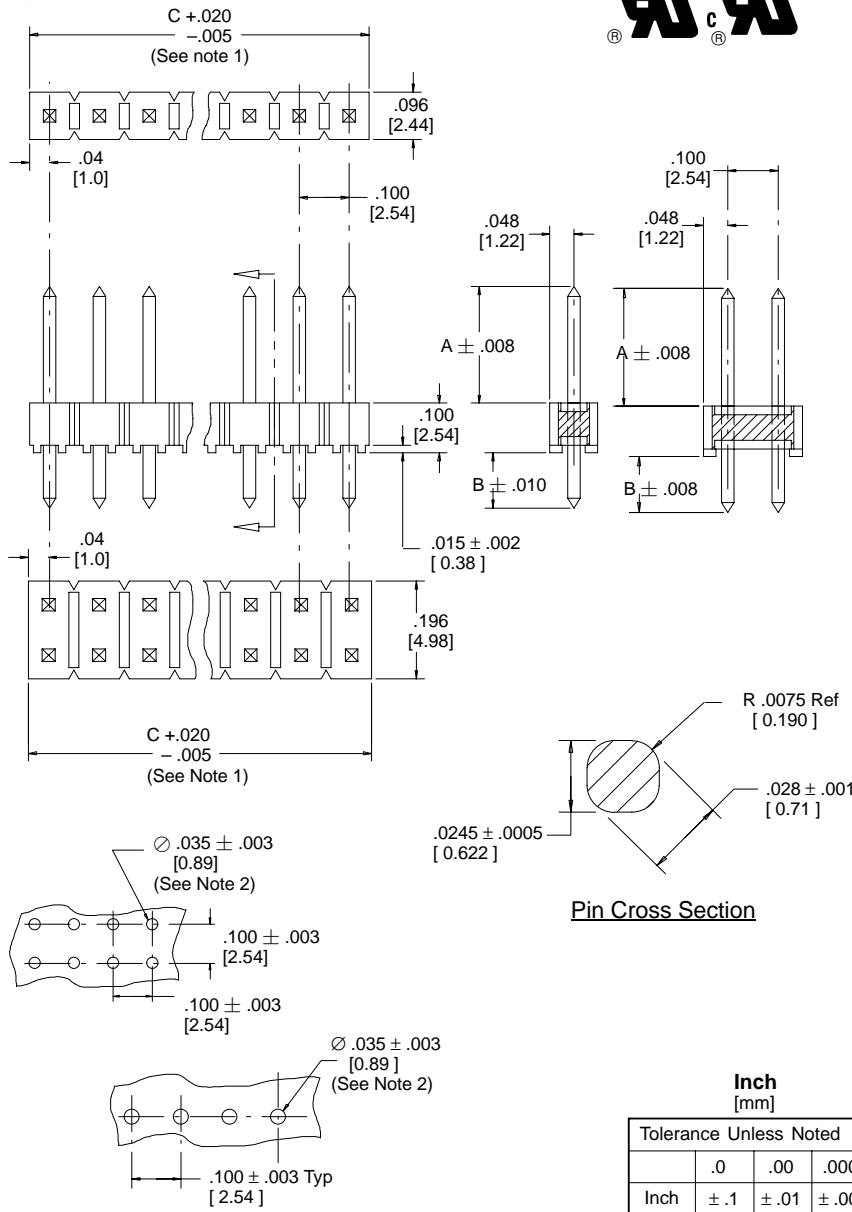
For technical, sales or ordering information call
800-225-5373

.100" and .100" × .100" Pin Strip Header

Straight & Right Angle, Solder Tail

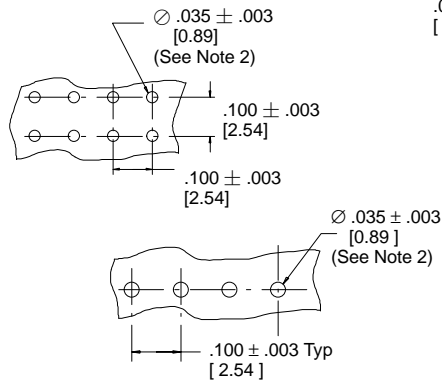
2400 Series

Straight



| Pin Quantity | | Dimension C |
|--------------|---------|----------------|
| One Row | Two Row | |
| 01 | | 0.09 [2.3] |
| 02 | 04 | 0.19 [4.8] |
| 03 | 06 | 0.29 [7.4] |
| 04 | 08 | 0.39 [9.9] |
| 05 | 10 | 0.49 [12.4] |
| 06 | 12 | 0.59 [15.0] |
| 07 | 14 | 0.69 [17.5] |
| 08 | 16 | 0.79 [20.1] |
| 09 | 18 | 0.89 [22.6] |
| 10 | 20 | 0.99 [25.1] |
| 11 | 22 | 1.09 [27.7] |
| 12 | 24 | 1.19 [30.2] |
| 13 | 26 | 1.29 [32.8] |
| 14 | 28 | 1.39 [35.3] |
| 15 | 30 | 1.49 [37.8] |
| 16 | 32 | 1.59 [40.4] |
| 17 | 34 | 1.69 [42.9] |
| 18 | 36 | 1.79 [45.5] |
| 19 | 38 | 1.89 [48.0] |
| 20 | 40 | 1.99 [50.5] |
| 21 | 42 | 2.09 [53.1] |
| 22 | 44 | 2.19 [55.6] |
| 23 | 46 | 2.29 [58.2] |
| 24 | 48 | 2.39 [60.7] |
| 25 | 50 | 2.49 [63.2] |
| 26 | 52 | 2.59 [65.8] |
| 27 | 54 | 2.69 [68.3] |
| 28 | 56 | 2.79 [70.9] |
| 29 | 58 | 2.89 [73.4] |
| 30 | 60 | 2.99 [75.9] |
| 31 | 62 | 3.09 [78.5] |
| 32 | 64 | 3.19 [81.0] |
| 33 | 66 | 3.29 [83.6] |
| 34 | 68 | 3.39 [86.1] |
| 35 | 70 | 3.49 [88.6] |
| 36 | 72 | 3.59 [91.2] |
| 37 | 74 | 3.69 [93.7] |
| 38 | 76 | 3.79 [96.3] |
| 39 | 78 | 3.89 [98.8] |
| 40 | 80 | 3.98 [101.1] |

Recommended Mounting Hole Pattern



| Inch [mm] | | | |
|------------------------|------|-------|--------|
| Tolerance Unless Noted | | | |
| | .0 | .00 | .000 |
| Inch | ± .1 | ± .01 | ± .005 |

[] Dimensions for Reference Only

Notes:

- This part is molded in the 40 contact quantity version. Parts that require fewer contacts are broken to length. Dimension "C" is measured from a "Molded End" to the "Center of the Break Point" beyond the desired quantity. On Pin Strips, which have break points on both ends, "C" = .100" x contact quantity per row.
- The recommended PCB hole size for the kinked tail positions on the .112" solder tail connector is .035" ± .002. Refer to TS-0971 for the number of tails kinked and the position kinked.

Ordering Information

24XX-6XXXTB

Pin Quantity:
(See Table)
One Row (01-40)
Two Row (04-80)

Pin Length
(Dim A)
1 = .235"
2 = .318"

Tail (Dim B)

One Row
12=.112" Solder Tails
13=.155" Solder Tails
32=.112" Kinked Solder Tails

Two Row

22=.112" Solder Tails
23=.155" Solder Tails
72=.112" Kinked Solder Tails

TS-0767-03
Sheet 2 of 3

3M Interconnect Solutions Division

6801 River Place Blvd.
Austin, TX 78726-9000

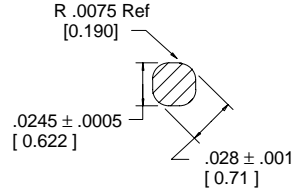
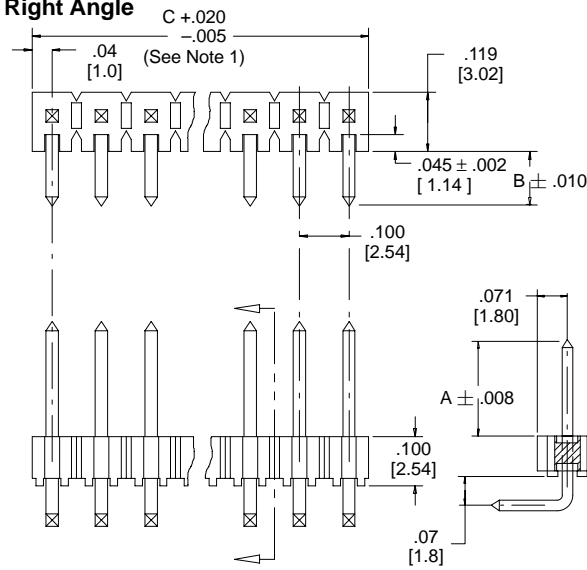
For technical, sales or ordering information call
800-225-5373

.100" and .100" × .100" Pin Strip Header

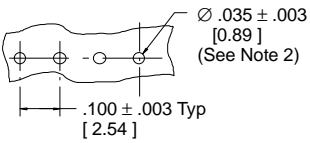
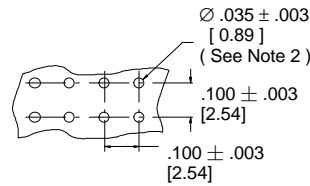
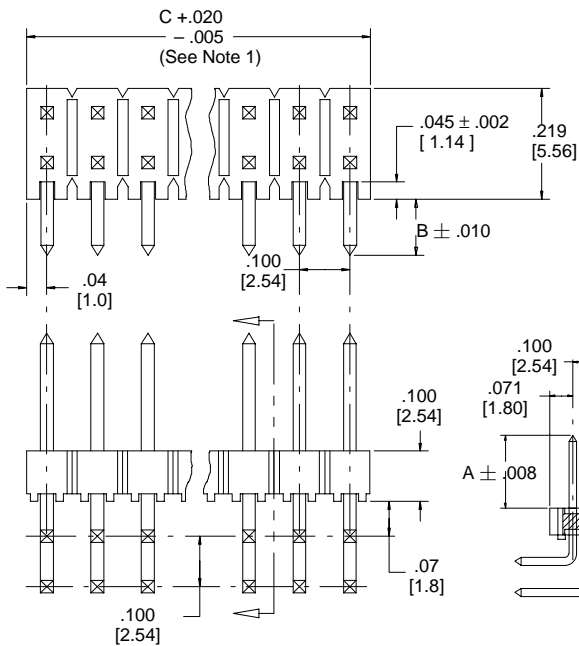
Straight & Right Angle, Solder Tail

2400 Series

Right Angle



Pin Cross Section



Recommended Mounting Hole Pattern

| Pin Quantity | | Dimension C |
|--------------|---------|--------------|
| One Row | Two Row | |
| 01 | 02 | 0.09 [2.3] |
| 02 | 04 | 0.19 [4.8] |
| 03 | 06 | 0.29 [7.4] |
| 04 | 08 | 0.39 [9.9] |
| 05 | 10 | 0.49 [12.4] |
| 06 | 12 | 0.59 [15.0] |
| 07 | 14 | 0.69 [17.5] |
| 08 | 16 | 0.79 [20.1] |
| 09 | 18 | 0.89 [22.6] |
| 10 | 20 | 0.99 [25.1] |
| 11 | 22 | 1.09 [27.7] |
| 12 | 24 | 1.19 [30.2] |
| 13 | 26 | 1.29 [32.8] |
| 14 | 28 | 1.39 [35.3] |
| 15 | 30 | 1.49 [37.8] |
| 16 | 32 | 1.59 [40.4] |
| 17 | 34 | 1.69 [42.9] |
| 18 | 36 | 1.79 [45.5] |
| 19 | 38 | 1.89 [48.0] |
| 20 | 40 | 1.99 [50.5] |
| 21 | 42 | 2.09 [53.1] |
| 22 | 44 | 2.19 [55.6] |
| 23 | 46 | 2.29 [58.2] |
| 24 | 48 | 2.39 [60.7] |
| 25 | 50 | 2.49 [63.2] |
| 26 | 52 | 2.59 [65.8] |
| 27 | 54 | 2.69 [68.3] |
| 28 | 56 | 2.79 [70.9] |
| 29 | 58 | 2.89 [73.4] |
| 30 | 60 | 2.99 [75.9] |
| 31 | 62 | 3.09 [78.5] |
| 32 | 64 | 3.19 [81.0] |
| 33 | 66 | 3.29 [83.6] |
| 34 | 68 | 3.39 [86.1] |
| 35 | 70 | 3.49 [88.6] |
| 36 | 72 | 3.59 [91.2] |
| 37 | 74 | 3.69 [93.7] |
| 38 | 76 | 3.79 [96.3] |
| 39 | 78 | 3.89 [98.8] |
| 40 | 80 | 3.98 [101.1] |

Notes:

1. This part is molded in the 40 contact quantity version. Parts that require fewer contacts are broken to length. Dimension "C" is measured from a "Molded End" to the "Center of the Break Point" beyond the desired quantity. On Pin Strips, which have break points on both ends, "C" = .100" x contact quantity per row.
2. The recommended PCB hole size for the kinked tail positions on the .112" solder tail connector is .035" ± .002. Refer to ts-0971 for the number of tails kinked and the position kinked.

Inch
[mm]

| Tolerance Unless Noted | | | |
|------------------------|------|-------|--------|
| | .0 | .00 | .000 |
| Inch | ± .1 | ± .01 | ± .005 |

[] Dimensions for Reference only

Ordering Information

24XX-5XXXTB

Pin Quantity:
(See Table)
One Row (01-40)
Two Row (02-80)

Pin Length
(Dim A)
1 = .235"
2 = .318"

Tail (Dim B)
One Row
12=.112" Solder Tails
13=.155" Solder Tails
32=.112" Kinked Solder Tails

Two Row
22=.112" Solder Tails
23=.155" Solder Tails
72=.112" Kinked Solder Tails

TS-0767-03
Sheet 3 of 3

3M Interconnect Solutions Division

6801 River Place Blvd.
Austin, TX 78726-9000

For technical, sales or ordering information call
800-225-5373