

Excellent Integrated System Limited

Stocking Distributor

Click to view price, real time Inventory, Delivery & Lifecycle Information:

[Amphenol RF](#)
[901-9873](#)

For any questions, you can email us directly:

sales@integrated-circuit.com



NOTES:

1. DO NOT SCALE THIS DRAWING.
2. MATERIALS OF CONSTRUCTION:
SHELL, HOUSING W/BARREL, COVER = BRASS (ASTM-B16 H02, C36000), GOLD PLATED (.000003 MIN)
CONTACT PIN = BRASS (ASTM-B16 H02, C36000), GOLD PLATED (.000050 MIN)
INSULATOR - PTFE, ASTM D 1710 OR EQUIV.
GASKET - SILICONE RUBBER, COLOR RED.
CRIMP, FERRULE - COPPER ALLOY, GOLD PLATED (.000003MIN)
RETAINER RING = Bery (CQ-C-530), NATURAL

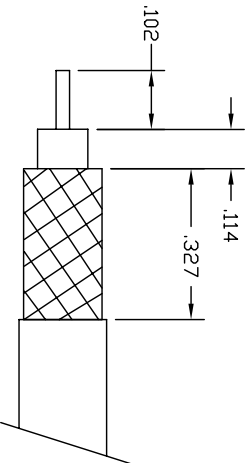
3. PERFORMANCE REQUIREMENTS:

ELECTRICAL:

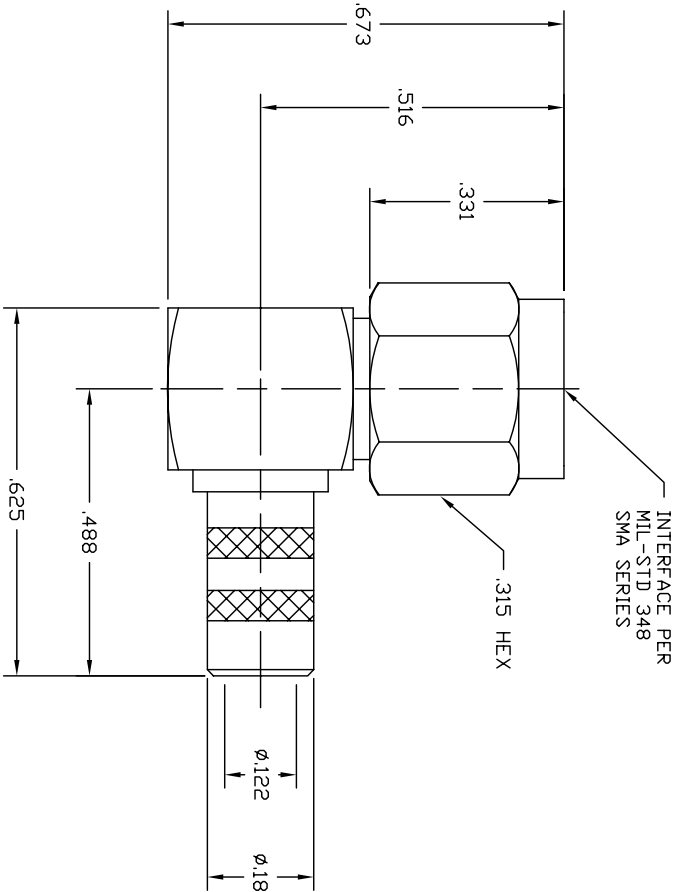
FREQUENCY RANGE - DC TO 12.4 GHZ
VSWR - 1.3501 MAX
DwV - 1000 VRMS

MECHANICAL:

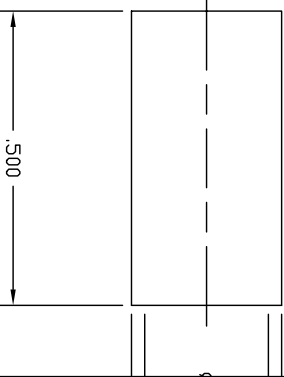
CENTER CONTACT RETENTION - 4 LBS MIN



CABLE STRIPPING DIM'S



INTERFACE PER
MIL-STD 348
SMA SERIES



901-9873	DRAWING NO.
THIRD ANGLE PROJ.	

REVISIONS

REV	DESCRIPTION
A	OFFICIAL ENG. RELEASE TO MFG.
B	REDRAWN ON AUTO-CAD, ALL NOTES REWRITTEN & UPDATED
C	SEE SHEET 1

UNLESS OTHERWISE SPECIFIED, DIMENSIONS ARE IN INCHES AND TOLERANCES ARE:

2 PLACE DECIMAL
±.015 (0.381 mm)

3 PLACE DECIMAL
±.005 (0.127 mm)

ANGLES
± 1°

NOTICE - These drawings, specifications, or other data (1) are, and remain the property of Amphenol Corp. (2) must be returned upon request; and (3) are confidential and not to be disclosed to any person other than those to whom they are given by Amphenol Corp. The furnishing of these drawings, specifications, or other data by Amphenol Corp., or to any other person to anyone for any purpose is not to be regarded by implication or otherwise in any manner licensing, granting rights or permitting such holder or any other person to manufacture, use or sell any product, process or design, patented or otherwise, that may in any way be related to or disclosed by said drawings, specifications, or other data.

MATERIAL

REFERENCE
EAR 111-964413
EAR 966278-0

DRAWN
P. BRENZEL
DATE
12/8/94

ENGINEER
RAV
DATE
3/31/95

APPROVED
B. GLEISSNER
DATE
8/23/96

CAD FILE
H:\PETE\SMA\901\ASSY\9873000C

TITLE

SMA PLUG
RIGHT ANGLE
CRIMP TYPE
FOR RG-58/U

CUSTOMER OUTLINE DRAW
ALL OTHER SHEETS ARE FOR INTERNAL USE

CODE ID
74868
DWG SIZE
B
DRAWING NO.
901-9873

Amphenol
RF/Middle
Donbury
SCALE: 4