

Excellent Integrated System Limited

Stocking Distributor

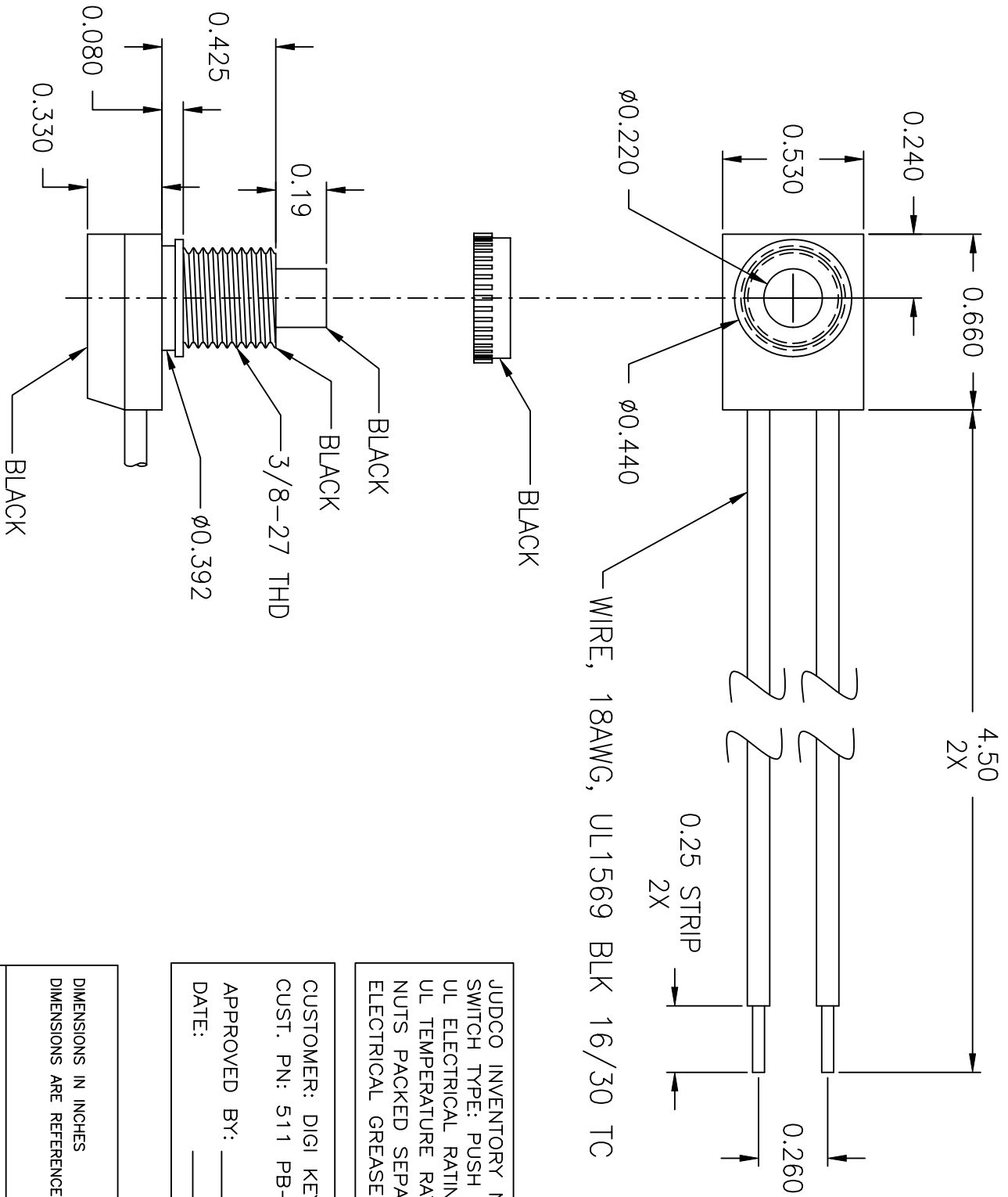
Click to view price, real time Inventory, Delivery & Lifecycle Information:

[Judco Manufacturing, Inc.](#)
[40-3145-01](#)

For any questions, you can email us directly:

sales@integrated-circuit.com

This document embodies a product, component, and/or design proprietary to JUDCO MANUFACTURING INC., and which is protected either as a trade secret, by U.S. Patent, or by copyright. It may not be used in any way without written express consent of JUDCO MANUFACTURING INC.

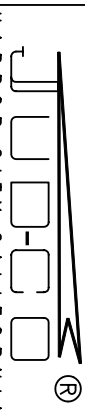


LTR	EN	DESCRIPTION	APPR	BY	DATE
A	-	INITIAL RELEASE	RB	EM	2-10-04

JUDCO INVENTORY NO. 40-3145-01
 SWITCH TYPE: PUSH ON - PUSH OFF, SPST
 UL ELECTRICAL RATING: 125VAC, 6A, 6A-L
 UL TEMPERATURE RATING: 65°C
 NUTS PACKED SEPARATELY
 ELECTRICAL GREASE ADDED: SYNTTECH 2292G2

CUSTOMER: DIGI KEY
 CUST. PN: 511 PB-ND
 APPROVED BY: _____
 DATE: _____

DIMENSIONS IN INCHES
 DIMENSIONS ARE REFERENCE



DRAWN: EM 02-10-04
 APPR: KU 02-10-04

TITLE
 J-188A-1 ULAC
 DWG. NO. 1415-569

1415US699A.DWG

SHEET 1 OF 1