

Excellent Integrated System Limited

Stocking Distributor

Click to view price, real time Inventory, Delivery & Lifecycle Information:

[Phoenix Contact](#)
[2757102](#)

For any questions, you can email us directly:

sales@integrated-circuit.com



Extract from the online catalog

UEGH 22,5

Order No.: 2757102



<http://eshop.phoenixcontact.de/phoenix/treeViewClick.do?UID=2757102>

Electronic housing, double-level, fully equipped with 6 screw connections per side for one printed circuit board

Commercial data	
GTIN (EAN)	 4 017918 063542
sales group	F013
Pack	10 pcs.
Customs tariff	85369010
Catalog page information	Page 564 (CC-2009)

Product notes

WEEE/RoHS-compliant since:
01/01/2003



<http://www.download.phoenixcontact.com>
 Please note that the data given here has been taken from the online catalog. For comprehensive information and data, please refer to the user documentation. The General Terms and Conditions of Use apply to Internet downloads.

Technical data	
General	
Housing type	Complete housing
Housing material	Polyamide (PA 6.6)
Color	green

UEGH 22,5 Order No.: 2757102

<http://eshop.phoenixcontact.de/phoenix/treeViewClick.do?UID=2757102>
Dimensions / positions

Length	79 mm
Width	22.5 mm
Number of positions	12
Pitch	5 mm

Technical data

Ambient temperature (operation)	-40 °C ... 105 °C
Connection in acc. with standard	CUL
Nominal voltage U_N	300 V
Nominal current I_N	10 A
AWG/kcmil	30-12
Indicator1	CUL1
Inflammability class acc. to UL 94	V0
Power dissipation at 20°C in the horizontal mounting position	4.6 W 6.7 W

Connection data

Conductor cross section solid min.	0.2 mm ²
Conductor cross section solid max.	4 mm ²
Conductor cross section stranded min.	0.2 mm ²
Conductor cross section stranded max.	2.5 mm ²
Conductor cross section AWG/kcmil min.	24
Conductor cross section AWG/kcmil max	12
Stripping length	8 mm

Certificates / Approvals


Certification

CUL, GOST, UL

UEGH 22,5 Order No.: 2757102

<http://eshop.phoenixcontact.de/phoenix/treeViewClick.do?UID=2757102>

Accessories

Item	Designation	Description
------	-------------	-------------

Bridges

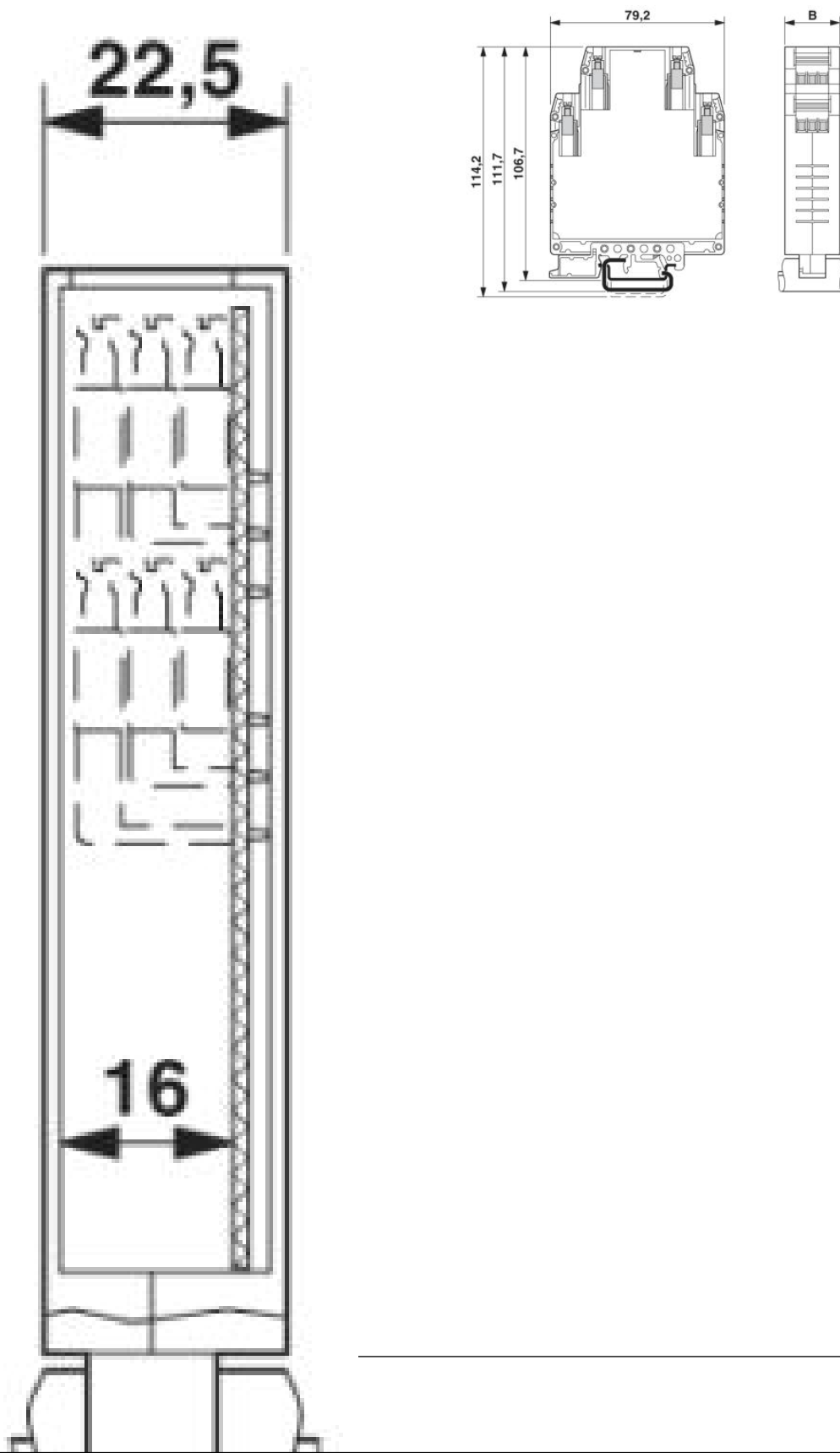
2820929	DB 50- 90 GY	Wire bridge, Color: gray
---------	--------------	--------------------------

UEGH 22,5 Order No.: 2757102

<http://eshop.phoenixcontact.de/phoenix/treeViewClick.do?UID=2757102>

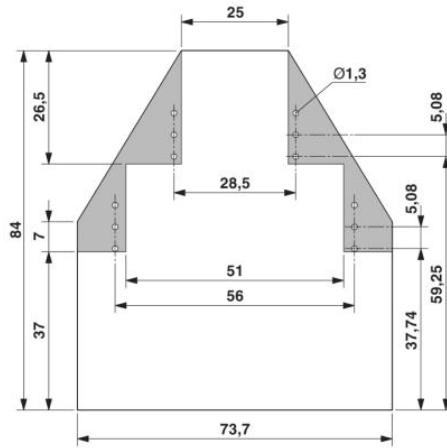
Diagrams/Drawings

Dimensioned drawing

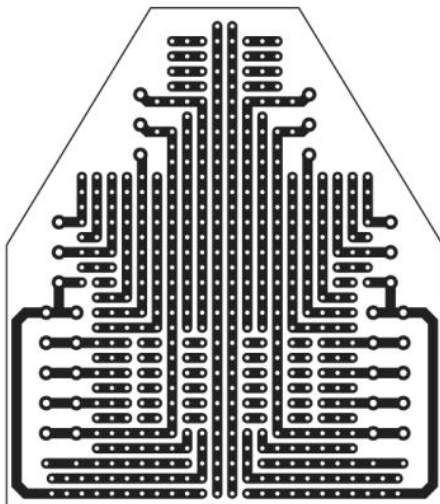


UEGH 22,5 Order No.: 2757102

<http://eshop.phoenixcontact.de/phoenix/treeViewClick.do?UID=2757102>



Schematic diagram



UEGH 22,5 Order No.: 2757102

<http://eshop.phoenixcontact.de/phoenix/treeViewClick.do?UID=2757102>

Address

PHOENIX CONTACT Deutschland GmbH
Flachsmarktstr. 8
32825 Blomberg, Germany
Phone +49 5235 3 12000
Fax +49 5235 3 41200
<http://www.phoenixcontact.de>



© 2011 Phoenix Contact
Technical modifications reserved;