

Excellent Integrated System Limited

Stocking Distributor

Click to view price, real time Inventory, Delivery & Lifecycle Information:

[Phoenix Contact](#)
[2757131](#)

For any questions, you can email us directly:

sales@integrated-circuit.com



Extract from the online catalog

UEGH 40/2


Order No.: 2757131

The illustration shows version UEGH 40/1



<http://eshop.phoenixcontact.de/phoenix/treeViewClick.do?UID=2757131>

Electronic housing, double-level, fully equipped with 12 screw connections per side for two printed circuit boards

| Commercial data | |
|--------------------------|--|
| GTIN (EAN) |  4 017918 104825 |
| sales group | F013 |
| Pack | 10 pcs. |
| Customs tariff | 85369010 |
| Catalog page information | Page 565 (CC-2009) |

Product notes

WEEE/RoHS-compliant since:
01/01/2003



<http://www.download.phoenixcontact.com>
Please note that the data given here has been taken from the online catalog. For comprehensive information and data, please refer to the user documentation. The General Terms and Conditions of Use apply to Internet downloads.

| Technical data | |
|------------------|--------------------|
| General | |
| Housing type | Complete housing |
| Housing material | Polyamide (PA 6.6) |
| Color | green |

UEGH 40/2 Order No.: 2757131

<http://eshop.phoenixcontact.de/phoenix/treeViewClick.do?UID=2757131>

Dimensions / positions

| | |
|---------------------|-------|
| Length | 79 mm |
| Width | 40 mm |
| Number of positions | 24 |
| Pitch | 5 mm |

Technical data

| | |
|---|-------------------|
| Ambient temperature (operation) | -40 °C ... 105 °C |
| Connection in acc. with standard | CUL |
| Nominal voltage U_N | 300 V |
| Nominal current I_N | 10 A |
| AWG/kcmil | 30-12 |
| Indicator1 | CUL1 |
| Inflammability class acc. to UL 94 | V0 |
| Power dissipation at 20°C in the horizontal mounting position | 6.1 W 9.1 W |

Connection data

| | |
|--|---------------------|
| Conductor cross section solid min. | 0.2 mm ² |
| Conductor cross section solid max. | 4 mm ² |
| Conductor cross section stranded min. | 0.2 mm ² |
| Conductor cross section stranded max. | 2.5 mm ² |
| Conductor cross section AWG/kcmil min. | 24 |
| Conductor cross section AWG/kcmil max | 12 |
| Stripping length | 8 mm |

Certificates / Approvals



Certification

CUL, GOST, UL

UEGH 40/2 Order No.: 2757131

<http://eshop.phoenixcontact.de/phoenix/treeViewClick.do?UID=2757131>

Accessories

| Item | Designation | Description |
|------|-------------|-------------|
|------|-------------|-------------|

Bridges

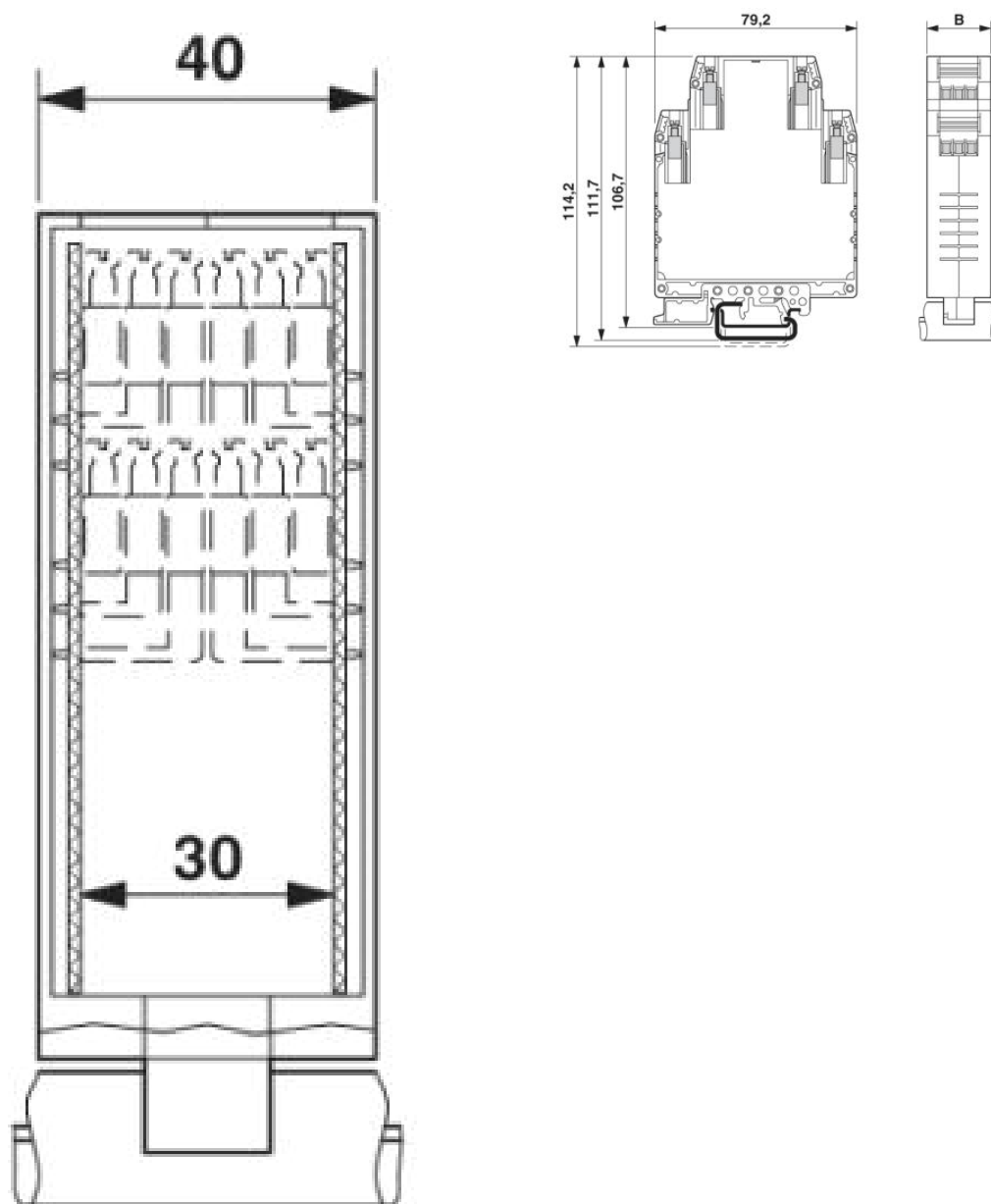
| | | |
|---------|--------------|--------------------------|
| 2820929 | DB 50- 90 GY | Wire bridge, Color: gray |
|---------|--------------|--------------------------|

UEGH 40/2 Order No.: 2757131

<http://eshop.phoenixcontact.de/phoenix/treeViewClick.do?UID=2757131>

Diagrams/Drawings

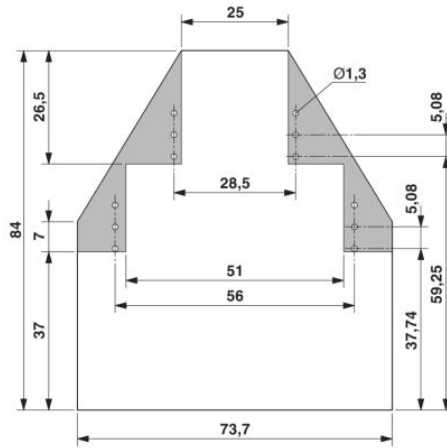
Dimensioned drawing



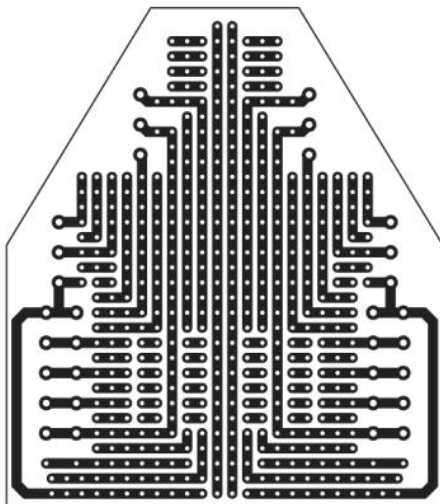
Enlarged internal area, for 2 PCBs, 24 positions

UEGH 40/2 Order No.: 2757131

<http://eshop.phoenixcontact.de/phoenix/treeViewClick.do?UID=2757131>



Schematic diagram



UEGH 40/2 Order No.: 2757131

<http://eshop.phoenixcontact.de/phoenix/treeViewClick.do?UID=2757131>

Address

PHOENIX CONTACT Deutschland GmbH
Flachsmarktstr. 8
32825 Blomberg, Germany
Phone +49 5235 3 12000
Fax +49 5235 3 41200
<http://www.phoenixcontact.de>



© 2011 Phoenix Contact
Technical modifications reserved;