

Excellent Integrated System Limited

Stocking Distributor

Click to view price, real time Inventory, Delivery & Lifecycle Information:

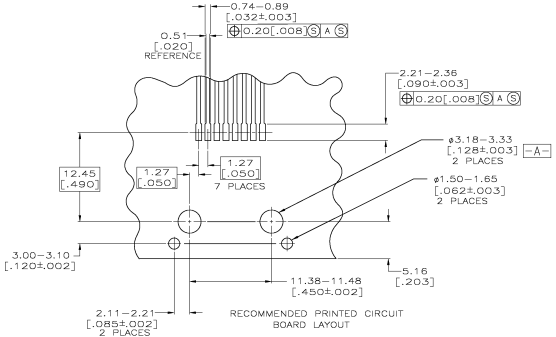
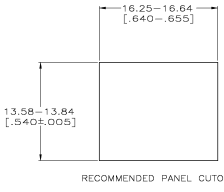
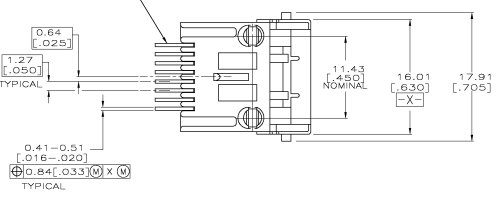
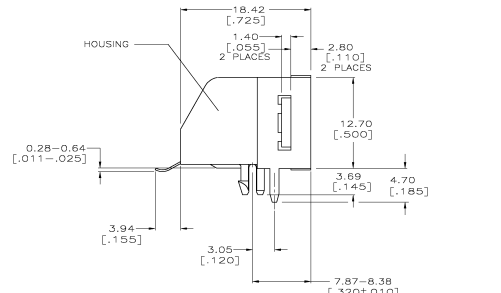
[TE Connectivity AMP Connectors](#)
[558178-1](#)

For any questions, you can email us directly:

sales@integrated-circuit.com

THIS DRAWING IS UNPUBLISHED. RELEASED FOR PUBLICATION. THIS DRAWING IS UNPUBLISHED. RELEASED FOR PUBLICATION. THIS DRAWING IS UNPUBLISHED. RELEASED FOR PUBLICATION.

REV	DATE	BY	CHK	APP	DESCRIPTION	SKT	APP
01					RSD - 2; EC 0511-0234-03		



- △ MATERIAL: HOUSING - HTN MOLDING COMPOUND, 94 VO, BLACK.
 TERMINAL - 0.36 [.014] THICK PHOS-BRONZE PLATE WITH 1.27µm [.000050] THICK HARD GOLD IN LOCALIZED GOLD PLATE AREA AND 3.81µm [.000150] THICK TIN-LEAD IN SOLDER AREA OVER 1.27µm [.000050] THICK NICKEL UNDERPLATE.
 SHIELD - 0.25 [.010] THICK COPPER ALLOY, PLATE WITH 2.03µm [.000080] THICK TIN-LEAD.
- △ CAVITY CONFORMS TO FCC RULES AND REGULATIONS, PART 68, SUBPART F.
- 3. DIMENSIONS ARE MAXIMUM UNLESS OTHERWISE SPECIFIED.
- 4. SNAP-IN RETENTION FEATURE ACCOMMODATES 1.44-1.71 [.062±.005] THICK PRINTED CIRCUIT BOARD.
- △ PACKAGING TAPE AND REEL: (PER EIA 481 SPECIFICATION)
 TAPE: 44 [1.73] WIDE
 POCKET DEPTH: 17.65 [.695]
 POCKET PITCH: 32 [1.26]
 CLEAR PSA TAPE TRAILER 160 [6.30] MIN LENGTH
 PLASTIC REEL DIA. 330 [13.0]
 PIECES PER REEL: 100

△ TAPE & REEL	558178-2
TRAY	558178-1
PACKAGING TYPE	PART NO.

DO NOT SCALE PRINT. UNLESS SPECIFIED DIMENSIONS IN mm (INCHES) TOLERANCES ON: 2 DEC DIG: ± .01 3 DEC DIG: ± .005 ANGLES: B ± .01	DR: 7-15-03 B. SIMPSON DW: 7-13-03 C. WHITE APPRO: 7-26-03 J. TONEY APPRO: 7-26-03 M. WIRTH PRODUCT SPEC: 108-1163	NAME: AMP Incorporated Harrisburg, PA 17103-3608 MODULAR JACK ASSEMBLY, 8 POSITION, RIGHT ANGLE, SURFACE MOUNTING, SHIELDED, LOW PROFILE, PRINTED CIRCUIT BOARD GROUND AND PANEL STOPS
FINISH: △	APPLICATION SPEC: 114-6040	SIZE: D 00779
	WEIGHT: -	CAGE CODE: 558178
		DRAWING NO: 558178
		SCALE: 4:1
		SHEET: 1 OF 1

THE DRAWING IS A CONTROLLED DOCUMENT FOR AMP INCORPORATED. IT IS SUBJECT TO CHANGE AND THE CONTROLLING DRAWING IDENTIFICATION SHOULD BE CONTACTED FOR THE LATEST VERSION.

CUSTOMER DRAWING