

Excellent Integrated System Limited

Stocking Distributor

Click to view price, real time Inventory, Delivery & Lifecycle Information:

[Honeywell Sensing and Productivity Solutions
102TP82-10](#)

For any questions, you can email us directly:

sales@integrated-circuit.com

102TP82-10
 CATALOG LISTING
 PAGE 1 OF 1
 RELEASE NO. PR-20331
 REPLACES -
 ISSUE 4
 REVISIONS
 A 204633
 BY 08/04/82
 CHECK SAV
 10DEC01
 10DEC01
 J/LH
 PTC/CAD 2D
 DRAWN

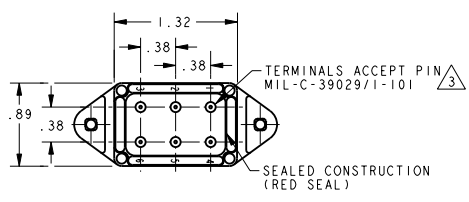
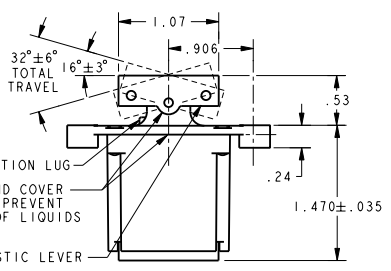
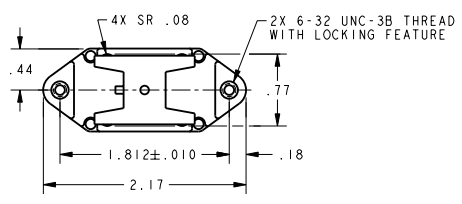
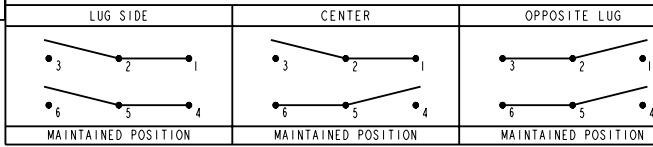
MICROSWITCH
a Honeywell Division
FED. REG. CODE 91929

SWITCH-TOGGLE
ABOVE PANEL MOUNT

CATALOG LISTING
102TP82-10

THIS DRAWING COVERS A PROPRIETARY ITEM AND IS THE PROPERTY OF MICRO SWITCH, A DIVISION OF HONEYWELL. THIS DRAWING IS NOT TO BE COPIED OR USED WITHOUT THE APPROVAL OF MICRO SWITCH

CIRCUIT MADE WITH TOGGLE LEVER IN



ELECTRICAL DATA

L191	15A 125, 250, 277 VAC
	1/2HP 125 VAC
	1HP 250, 277 VAC
	5A 125 VAC "L"

UL CE

- NOTES
- 1 - CIRCUIT DESIGNATION AND MICRO SWITCH CATALOG LISTING MARKED ON SIDE OF SWITCH
 - 2 - SWITCHES ARE CAPABLE OF WITHSTANDING A TEMPERATURE OF 160°F CONTINUOUSLY AT FULL RATED LOAD THE SEALING GROMMET SHALL SEAL ON A SMOOTH WIRE INSULATION OF Ø.040 TO Ø.083 (16-20 GAGE)
 - 3 - UNUSED TERMINAL HOLES MAY BE SEALED WITH PLUGS M83723/28-20

THIRD ANGLE PROJECTION

SCALE	FULL
DO NOT SCALE PRINT	
UNLESS OTHERWISE SPECIFIED TOLERANCES ARE	
ONE PLACE	(.0) ±.030
TWO PLACE	(.00) ±.015
THREE PLACE	(.000) ±.005
ANGLES	±
WEIGHT	

ANSI Y14.5M-1982 APPLIES