

## **Excellent Integrated System Limited**

Stocking Distributor

Click to view price, real time Inventory, Delivery & Lifecycle Information:

[Hammond Manufacturing](#)  
[N1WF1084](#)

For any questions, you can email us directly:

[sales@integrated-circuit.com](mailto:sales@integrated-circuit.com)

# Type 1 Mild Steel 3 Piece Flushmount Enclosure *N1WF* *Series* Hinge Door with Quarter Turn



## Application

- Designed for indoor use to enclose controls, instruments, and components which do not require oil-tight or dust-tight protection.
- Ideal for applications where components may be easily mounted and wired prior to installation of wrapper and door.

## Standards

- UL 50 Type 1
- CSA Type 1
- Complies with
  - NEMA Type 1
  - IEC 60529, IP20

## Construction

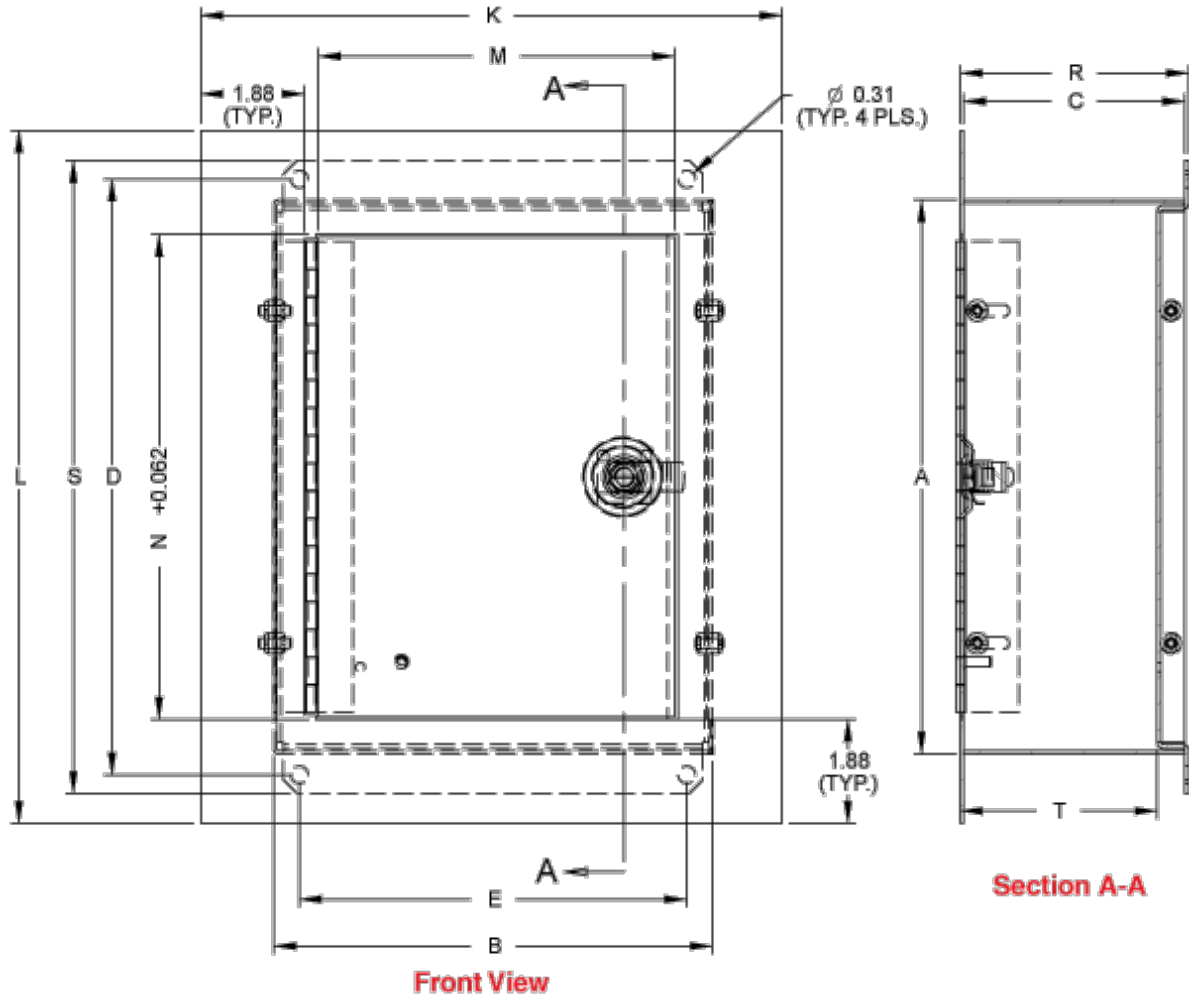
- Three piece assembly consisting of a base, wrapper, and door.
- Components are attached and secured with metal screws.
- 14 gauge reverse formed base provides clearance for mounting hardware.
- Punched for left or right hinging of the door and ease of assembly.
- Wrapper is formed from 16 gauge steel, with no knock-outs in the sides.
- Flush mounting door assembly formed from 16 gauge steel.
- Door is fastened with a slotted quarter turn latch.
- A bonding stud is provided on the door and a grounding screw is provided for the enclosure.

## Finish

- Base, wrapper and door are finished in ANSI 61 gray powder coating.

## Accessories

- Type 1 Lock Kit
- Padlock Adaptor



Part No.	Wrapper Size		Mounting Centers			Door		Overall Dimensions			Base		Ship Wt.
	A	B	C	D	E	M	N	K	R1	L	S	T1	Lbs
<b>N1WF864</b>	8.00	6.00	4.00	8.75	5.00	4.46	6.68	8.50	4.13 - 4.6	10.50	9.50	3.5 - 3.9	6
<b>N1WF1084</b>	10.00	8.00	4.00	10.75	7.00	6.46	8.68	10.50	4.13 - 4.6	12.50	11.50	3.5 - 3.9	8
<b>N1WF12104</b>	12.00	10.00	4.00	12.75	9.00	8.46	10.68	12.50	4.13 - 4.6	14.50	13.50	3.5 - 3.9	11
<b>N1WF16124</b>	16.00	12.00	4.00	16.75	11.00	10.46	14.68	14.50	4.13 - 4.6	18.50	17.50	3.5 - 3.9	15
<b>N1WF20164</b>	20.00	16.00	4.00	20.75	15.00	14.46	18.68	18.50	4.13 - 4.6	22.50	21.50	3.5 - 3.9	22
<b>N1WF24204</b>	24.00	20.00	4.00	24.75	19.00	18.46	22.68	22.50	4.13 - 4.6	26.50	25.50	3.5 - 3.9	30

Data subject to change without notice