

Excellent Integrated System Limited

Stocking Distributor

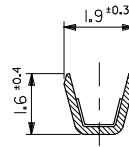
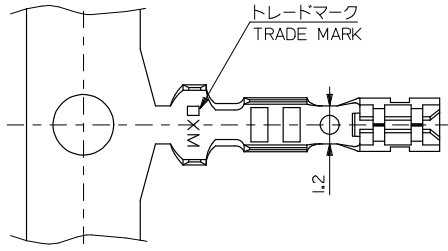
Click to view price, real time Inventory, Delivery & Lifecycle Information:

[Molex Connector Corporation](#)

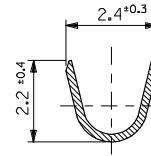
[0008701040](#)

For any questions, you can email us directly:

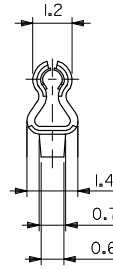
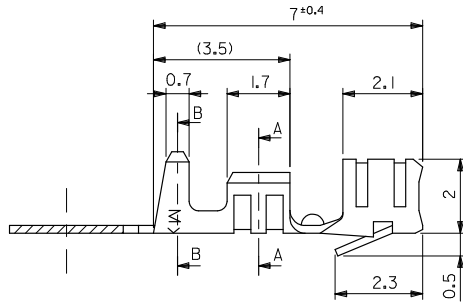
sales@integrated-circuit.com



断面 A-A
SECT. A-A



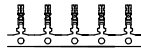
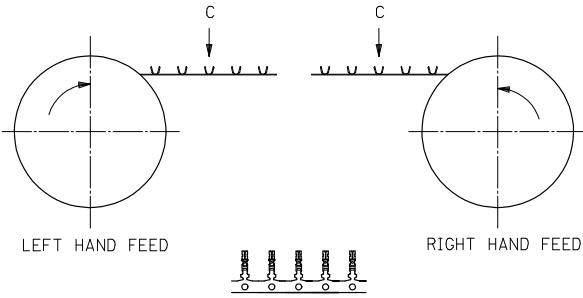
断面 B-B
SECT. B-B



注記
NOTE

- 材質: リン青銅 (t=0.203)
MATERIAL: PHOSPHOR BRONZE
- メッキ: 前鍍メッキ
FINISH: PRE TINNED
- 使用ハウジング: 5264シリーズ
SUITABLE HOUSING: 5264 SERIES
- 適用電線範囲: AWG#22-28 (0.33 ~ 0.08mm²)
WIRE RANGE: AWG #22-28(0.33 - 0.08mm²)
- 被覆外形: φ1.15 ~ φ1.9
INSULATION RANGE: φ 1.15 - φ1.9

RIGHT HAND	39-00-0159	5263PBTR	連鎖状 CHAIN
LEFT HAND	08-70-1040	5263PBTL	バラ状 LOOSE
	08-70-1039	5263PBT	連鎖状 CHAIN
FEED TYPE	EDP NO.	ENG. NO.	端子形状 FORM



REVISED EC NO.: J2008-4450 DRAWN BY: CHKD BY: APPRAISED BY: DATE: 2008/07/01 2008/07/02 2008/07/02	GENERAL TOLERANCES (UNLESS SPECIFIED)		DIMENSION STYLE MM ONLY	SCALE 10:1	5263PBT*	MODEL NO.
	10 UNDER	± 0.2	DRAWN BY K. TOJO	DATE '91/07/19	DESIGN UNITS METRIC	THIRD ANGLE PROJECTION
	10 OVER 30 UNDER	± 0.25	CHECKED BY M. FUKUSHIMA	DATE '91/08/09	2.5 LOW PROFILE CRIMP RECEPTACLE	
	30 OVER	± 0.3	APPROVED BY M. ENOMOTO	DATE '91/08/09	MOLEX INCORPORATED	
	ANGULAR	± 3 °	MATERIAL NO.	DOCUMENT NO.	SD-5263-003	SHEET NO. 1 OF 1
	DRAFT WHERE APPLICABLE MUST REMAIN WITHIN DIMENSIONS		SIZE A3	THIS DRAWING CONTAINS INFORMATION THAT IS PROPRIETARY TO MOLEX INCORPORATED AND SHOULD NOT BE USED WITHOUT WRITTEN PERMISSION		