

Excellent Integrated System Limited

Stocking Distributor

Click to view price, real time Inventory, Delivery & Lifecycle Information:

[Vishay/Siliconix](#)
[SIP41109DY-T1-E3](#)

For any questions, you can email us directly:

sales@integrated-circuit.com



SiP41109, SiP41110

Vishay Siliconix

Half-Bridge N-Channel MOSFET Driver for DC/DC Conversion

DESCRIPTION

The SiP41109 and SiP41110 are high-speed half-bridge MOSFET drivers for use in high frequency, high current, multiphase dc-to-dc synchronous rectifier buck power supplies. They are designed to operate at switching frequencies up to 1 MHz. The high-side driver is bootstrapped to allow driving N-channel MOSFETs.

They feature adaptive shoot-through protection to prevent simultaneous conduction of the external MOSFETs. There are two options available for the voltage of the high-side and low-side drivers. In the SiP41109, the regulator supplies gate drive voltage to the high-side driver and V_{CC} supplies the low-side driver. In the SiP41110, the regulator supplies the high- and low-side gate drive voltage.

The SiP41109 and SiP41110 are assembled in a lead (Pb)-free 8-pin SOIC package for operation over the industrial operating range (-40 °C to 85 °C).

FEATURES

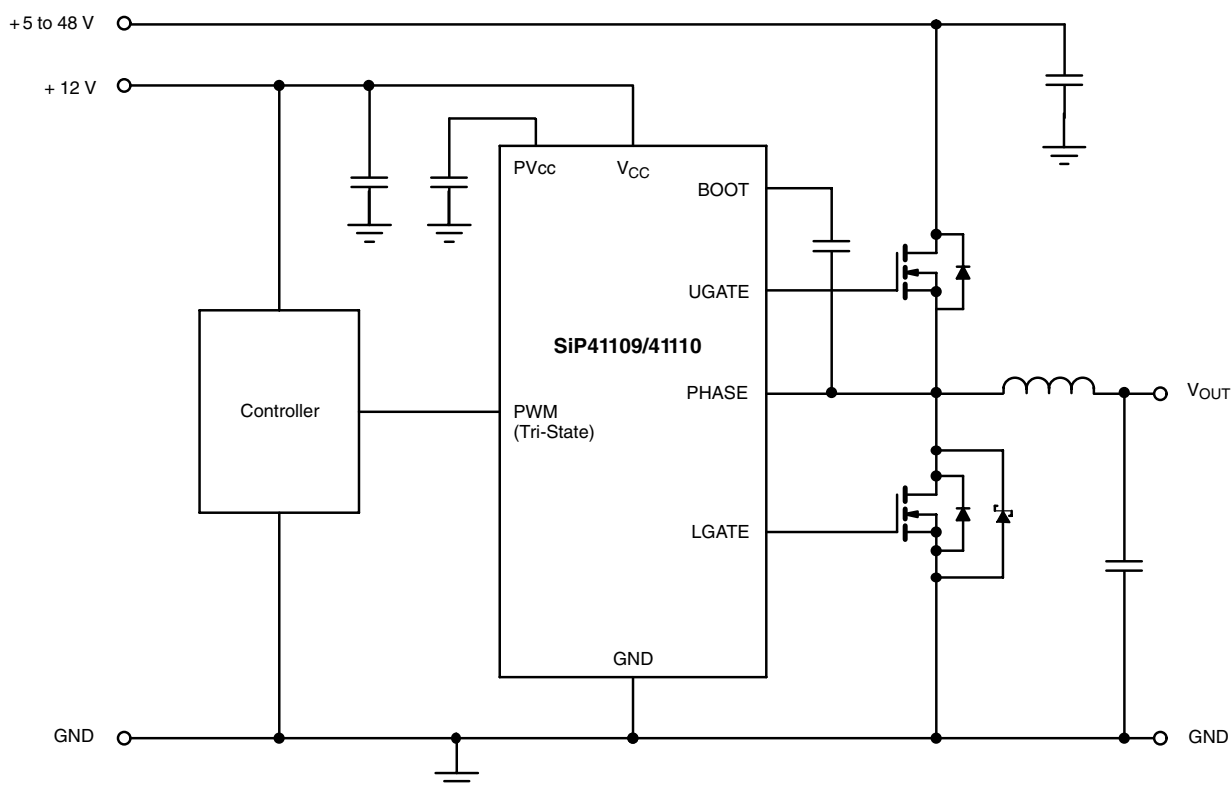
- PWM with tri-state enable
- 12 V low-side gate drive (SiP41109)
- 8 V low-side gate drive (SiP41110)
- Undervoltage lockout
- Internal bootstrap diode
- Switching frequency up to 1 MHz
- 30 ns max. propagation delay
- Drive MOSFETs in 5 V to 48 V systems
- Adaptive shoot-through protection



APPLICATIONS

- Multi-phase DC/DC conversion
- High current low voltage DC/DC converters
- High frequency DC/DC converters
- Mobile and desktop computer DC/DC converters
- Core voltage supplies for PC micro-processors

TYPICAL APPLICATION CIRCUIT



SiP41109, SiP41110

Vishay Siliconix



| ABSOLUTE MAXIMUM RATINGS (all voltages referenced to GND = 0 V) | | | |
|--|------|-------------|------|
| Parameter | | Limit | Unit |
| V _{CC} , PV _{CC} | | - 0.3 to 15 | V |
| BOOT, PHASE | | - 0.3 to 55 | |
| BOOT to PHASE | | - 0.3 to 15 | |
| Storage Temperature | | - 40 to 150 | °C |
| Operating Junction Temperature | | 125 | |
| Power Dissipation ^a | SO-8 | 770 | mW |
| Thermal Impedance (Θ _{JA}) ^b | | 130 | °C/W |

Notes:

a. Device Mounted with all leads soldered or welded to PC board.

b. Derate 7.7 mW/°C.

Stresses beyond those listed under "Absolute Maximum Ratings" may cause permanent damage to the device. These are stress ratings only, and functional operation of the device at these or any other conditions beyond those indicated in the operational sections of the specifications is not implied. Exposure to absolute maximum rating conditions for extended periods may affect device reliability.

| RECOMMENDED OPERATING RANGE (all voltages referenced to GND = 0 V) | | |
|---|----------------|------|
| Parameter | Limit | Unit |
| V _{CC} | 10.8 to 13.2 | V |
| V _{LX} | 48 | |
| C _{BOOT} | 100 nF to 1 μF | |
| BOOT to PHASE | 8 | V |
| Operating Temperature Range | - 40 to 85 | °C |

| SPECIFICATIONS ^a | | | | | | | | |
|---------------------------------------|------|------------------|---|----------|-------------------|-------------------|-----------------|-------------------|
| Parameter | | Symbol | Test Conditions Unless Specified V _{CC} = 12 V, V _{BOOT} - V _{PHASE} = 8 V T _A = - 40 °C to 85 °C | | Limits | | Unit | |
| | | | | | Min. ^a | Typ. ^b | | Max. ^a |
| Power Supplies | | | | | | | | |
| Supply Voltage | | V _{DD} | | | 10.8 | | 13.2 | V |
| Quiescent Current | | I _{CCQ} | PWM non-switching | | | 5.6 | 9.5 | mA |
| Supply Current | | I _{DD} | f _{PWM} = 100 kHz, C _{LOAD} = 3 nF | SiP41109 | 12.5 | | | |
| | | | | SiP41110 | 11.0 | | | |
| Tristate (Shutdown) Current | | I _{CCT} | PWM = open | | | 850 | 1200 | μA |
| Reference Voltage | | | | | | | | |
| Break-Before-Make | | V _{BBM} | | | | 2.5 | | V |
| PWM Input | | | | | | | | |
| Input High | | V _{IH} | | | 4.0 | | V _{DD} | V |
| Input Low | | V _{IL} | | | | | 1.0 | |
| Bias Current | | I _B | PWM 5 V or 0 V | | | ± 600 | ± 1000 | μA |
| Tristate Threshold | High | V _{TSH} | | | 3.0 | | | V |
| | Low | V _{TSL} | | | | | 2.0 | |
| Tristate Holdoff Timeout ^c | | t _{TST} | | | | 240 | | ns |
| Bootstrap Diode | | | | | | | | |
| Forward Voltage | | V _F | I _F = 40 mA, T _A = 25 °C | | 0.70 | 0.85 | 1.0 | V |



SiP41109, SiP41110

Vishay Siliconix

| SPECIFICATIONS ^a | | | | | | | |
|--|--------------------------|---|----------|-------------------|-------------------|-------------------|------|
| Parameter | Symbol | Test Conditions Unless Specified V _{CC} = 12 V, V _{BOOT} - V _{PHASE} = 8 V T _A = - 40 °C to 85 °C | | Limits | | | Unit |
| | | | | Min. ^a | Typ. ^b | Max. ^a | |
| MOSFET Drivers | | | | | | | |
| High-Side Drive Current ^c | I _{PKH(source)} | V _{BOOT} - V _{PHASE} = 8 V | | | 0.8 | | A |
| | I _{PKH(sink)} | | | | 1.0 | | |
| Low-Side Drive Current ^c | I _{PKL(source)} | V _{PVCC} = 8 V | SiP41110 | | 0.9 | | |
| | I _{PKL(sink)} | | | | 1.2 | | |
| | I _{PKL(source)} | V _{PVCC} = 12 V | SiP41109 | | 1.4 | | |
| | I _{PKL(sink)} | | | | 1.8 | | |
| High-Side Driver Impedance | R _{DH(source)} | V _{BOOT} - V _{PHASE} = 8 V, PHASE = GND | | | 2.3 | 4.2 | Ω |
| | R _{DH(sink)} | | | | 1.9 | 3.5 | |
| Low-Side Driver Impedance | R _{DL(source)} | V _{PVCC} = 8 V | SiP41110 | | 2.9 | 5.2 | |
| | R _{DL(sink)} | | | | 1.3 | 2.4 | |
| | R _{DL(source)} | V _{PVCC} = 12 V | SiP41109 | | 2.4 | 4.3 | |
| | R _{DL(sink)} | | | | 1.2 | 2.2 | |
| High-Side Rise Time | t _{rH} | 10 % - 90 %, V _{BOOT} - V _{PHASE} = 8 V, C _{LOAD} = 3 nF | | | 45 | | ns |
| High-Side Fall Time | t _{fH} | | | | 35 | | |
| High-Side Rise Time Bypass | | 10 % - 90 %, V _{BOOT} - V _{PHASE} = 12 V, C _{LOAD} = 3 nF | | | 45 | | |
| High-Side Fall Time Bypass | | | | | 35 | | |
| High-Side Propagation Delay ^c | t _{d(off)H} | See Timing Waveforms | | | 15 | | |
| | t _{d(on)H} | | | | 15 | | |
| Low-Side Rise Time | t _{rL} | 10 % to 90 %, V _{BOOT} - V _{PHASE} = 8 V C _{LOAD} = 3 nF | SiP41110 | | 40 | | |
| | | 10 % to 90 %, V _{BOOT} - V _{PHASE} = 12 V C _{LOAD} = 3 nF | SiP41109 | | 40 | | |
| Low-Side Fall Time | t _{fL} | 10 % to 90 %, V _{BOOT} - V _{PHASE} = 8 V C _{LOAD} = 3 nF | SiP41110 | | 30 | | |
| | | 10 % to 90 %, V _{BOOT} - V _{PHASE} = 12 V C _{LOAD} = 3 nF | SiP41109 | | 30 | | |
| Low-Side Propagation Delay | t _{d(off)L} | See Timing Waveforms | | | 15 | | |
| | t _{d(on)L} | | | | 15 | | |
| PHASE Timer | | | | | | | |
| PHASE Falling Timeout ^c | t _{PHASE} | | | | 380 | | ns |
| PV _{CC} Regulator | | | | | | | |
| Output Voltage | PV _{CC} | | | 7.6 | 8 | 8.4 | V |
| Output Current | I _{PVCC} | | | | 80 | 100 | mA |
| Current Limit | I _{LIM} | V _{DRV} = 0 V | | 120 | 200 | 280 | |
| Line Regulation | LNR | V _{CC} = 10.8 V to 13.2 V | | | 0.05 | 0.5 | %/V |
| Load Regulation | LDR | 5 mA to 80 mA | | | 0.1 | 1.0 | % |
| PV _{CC} Regulator UVLO | | | | | | | |
| PV _{CC} Rising | V _{UVLO2} | | | | 6.7 | 7.2 | V |
| PV _{CC} Falling | | | | | 6.4 | 6.9 | |
| Hysteresis | Hyst | | | 100 | 300 | 500 | mV |
| High-Side Undervoltage Lockout | | | | | | | |
| Threshold | V _{UVHS} | Rising or falling | | 2.5 | 3.35 | 4.0 | V |
| V _{CC} Undervoltage Lockout | | | | | | | |
| Threshold | V _{UVLO1} | | | 5.0 | 5.3 | 5.6 | V |
| Power on Reset Time | POR | | | | 2.5 | | ms |
| Thermal Shutdown | | | | | | | |
| Temperature | T _{SD} | Temperature rising | | | 165 | | °C |
| Hysteresis | T _H | Temperature ralling | | | 25 | | |

Notes:

a. The algebraic convention whereby the most negative value is a minimum and the most positive a maximum.

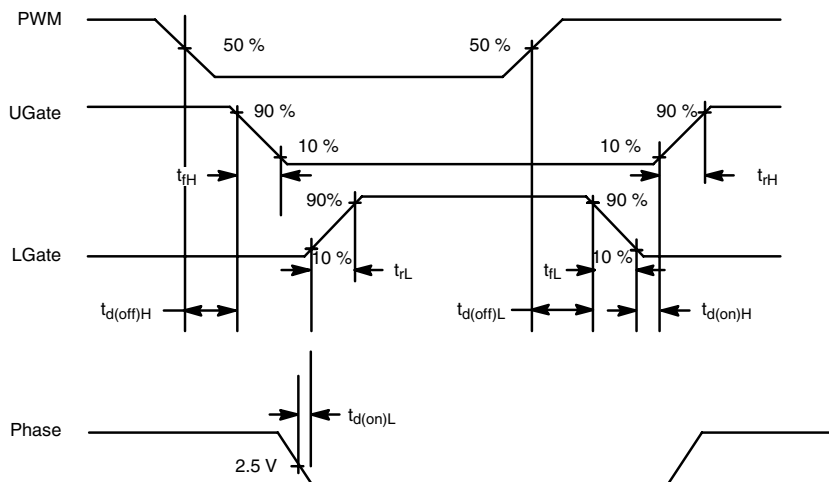
b. Typical values are for DESIGN AID ONLY, not guaranteed nor subject to production testing and are measured at V_{CC} = 12 V unless otherwise noted.

SiP41109, SiP41110

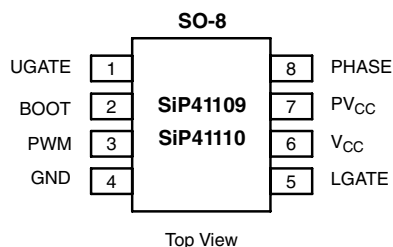
Vishay Siliconix



TIMING WAVEFORMS



PIN CONFIGURATION AND TRUTH TABLE



TRUTH TABLE

| PWM | UGATE | LGATE |
|-----------|-------|-------|
| L | L | H |
| L | H | L |
| Tri-State | L | L |

ORDERING INFORMATION

| Part Number | Temperature Range | Marking |
|------------------|-------------------|---------|
| SiP41109DY-T1-E3 | - 40 °C to 85 °C | 41109 |
| SiP41110DY-T1-E3 | | 41110 |
| Eval Kit | Temperature Range | |
| SiP41109DB | - 40 °C to 85 °C | |
| SiP41110DB | | |

PIN DESCRIPTION

| Pin Number | Name | Function |
|------------|-------|---|
| 1 | UGATE | 8 V high-side MOSFET gate drive |
| 2 | BOOT | Bootstrap supply for high-side driver. The bootstrap capacitor is connected between BOOT and PHASE. |
| 3 | PWM | Input signal for the MOSFET drivers and tri-state enable |
| 4 | GND | Ground |
| 5 | LGATE | Synchronous or low-side MOSFET gate drive |
| 6 | VCC | 12 V supply. Connect a bypass capacitor $\geq 1 \mu\text{F}$ from here to ground |
| 7 | PVCC | 8 V voltage regulator Output. Connect a bypass capacitor $\geq 1 \mu\text{F}$ from here to ground |
| 8 | PHASE | Connection to source of high-side MOSFET, drain of the low-side MOSFET, and the inductor |



SiP41109, SiP41110

Vishay Siliconix

FUNCTIONAL BLOCK DIAGRAM

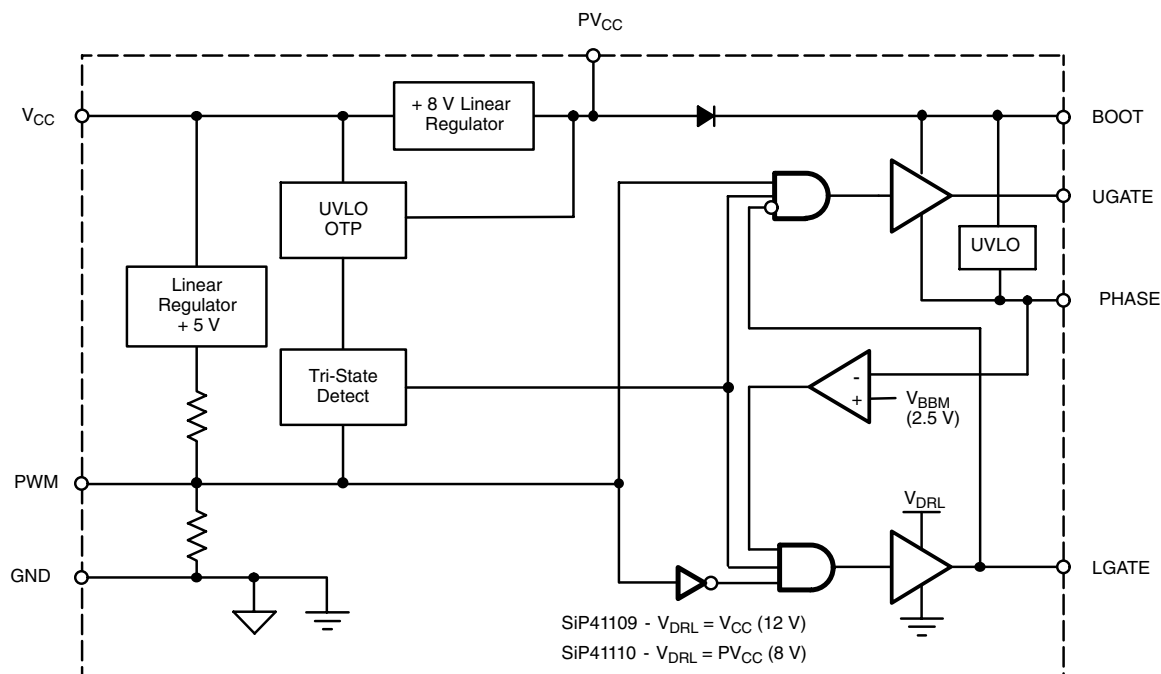


Figure 1.

DETAILED OPERATION

PWM/Tri-State Enable

The PWM pin controls the switching of the external MOSFETs. The driver logic operates in a noninverting configuration. The PWM input stage should be driven by a signal with fast transition times, like those provided by a PWM controller or logic gate, (< 200 ns). The PWM input functions as a logic input and is not intended for applications where a slow changing input voltage is used to generate a switching output when the input switching threshold voltage is reached.

Shutdown

The SiP41109/41110 enters shutdown mode when the signal driving PWM enters the tri-state window for more than 240 ns. The shutdown state is removed when the PWM signal moves outside the tri-state window. If the PWM is left open, the pin is held to 2.5 V by an internal voltage divider, thus forcing the tri-state condition.

Low-Side Driver

In the SiP41109, the low-side driver voltage is supplied by V_{CC} . In the SiP41110, the low-side driver voltage is supplied by PV_{CC} . During shutdown, LGATE is held low.

High-Side Driver

The high-side driver is isolated from the substrate to create a floating high-side driver so that an N-channel MOSFET can be used for the high-side switch. The high-side driver voltage is supplied by PV_{CC} . The voltage is maintained by a floating bootstrap capacitor, which is continually recharged by the switching action of the output. During shutdown UGATE is held low.

Gate Drive Voltage (PV_{CC}) Regulator

An integrated 80 mA, 8 V regulator supplies voltage to the PV_{CC} pin and it current limits at 200 mA typical when the output is shorted to ground. A capacitor (1 μ F minimum) must be connected to the PV_{CC} pin to stabilize the regulator output. The voltage on PV_{CC} is supplied to the integrated bootstrap diode. PV_{CC} is used to recharge the bootstrap capacitor and powers the SiP41110 low-side driver. PV_{CC} pin can be externally connected to V_{CC} to bypass the 8 V regulator and increase high-side gate drive to 12 V. If the PV_{CC} pin is connected to V_{CC} the system voltage should not exceed 43 V.

Bootstrap Circuit

The internal bootstrap diode and an external bootstrap capacitor supply voltage to the BOOT pin. An integrated bootstrap diode replaces the external diode normally needed

SiP41109, SiP41110

Vishay Siliconix



for the bootstrap circuit; only a capacitor is necessary to complete the bootstrap circuit. The bootstrap capacitor is sized according to

$$C_{BOOT} = (Q_{GATE} / (\Delta V_{BOOT} - V_{PHASE})) \times 10$$

where Q_{GATE} is the gate charge needed to turn on the high-side MOSFET and ΔV_{BOOT} - V_{PHASE} is the amount of droop allowed in the bootstrapped supply voltage when the high-side MOSFET is driven high. The bootstrap capacitor value is typically 0.1 μ F to 1 μ F. The bootstrap capacitor voltage rating must be greater than $V_{CC} + 12$ V to withstand transient spikes and ringing.

Shoot-Through Protection

The external MOSFETs are prevented from conducting at the same time during transitions. Break-before-make circuits monitor the voltages on the PHASE pin and the LGATE pin and control the switching as follows: When the signal on PWM goes low, UGATE will go low after an internal propagation delay. After the voltage on PHASE falls below 2.5 V by the inductor action, the low-side driver is enabled and LGATE goes high after some delay. When the signal on PWM goes high, LGATE will go low after an internal propagation delay. After the voltage on LGATE drops below

2.5 V the high-side driver is enabled and UGATE will go high after an internal propagation delay. If PHASE does not drop below 2.5 V within 380 ns after UGATE goes low, LGATE is forced high until the next PWM transition.

V_{CC} Bypass Capacitor

MOSFET drivers draw large peak currents from the supplies when they switch. A local bypass capacitor is required to supply this current and reduce power supply noise. Connect a 1 μ F ceramic capacitor as close as practical between the V_{CC} and GND pins.

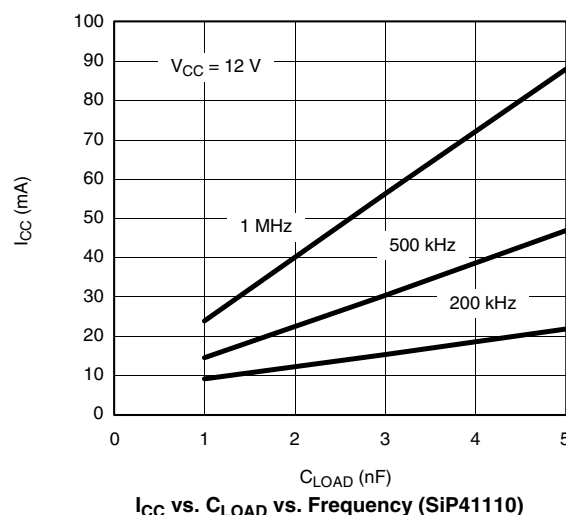
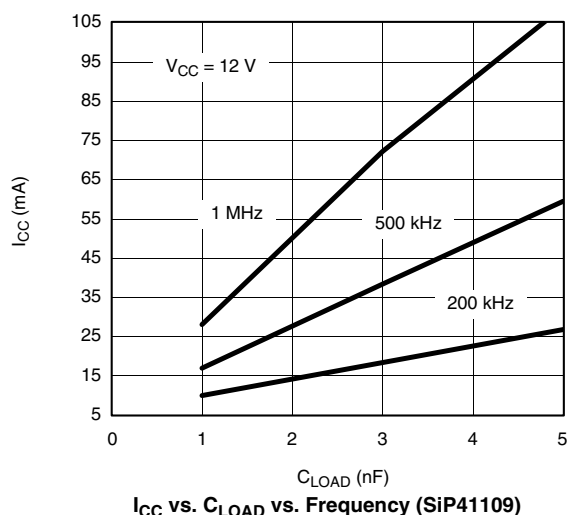
Undervoltage Lockout

Undervoltage lockout prevents control of the circuit until the supply voltages reach valid operating levels. The UVLO circuit forces LGATE and UGATE to low when V_{CC} is below its specified voltage. A separate UVLO forces UGATE low when the voltage between BOOT and PHASE is below the specified voltage.

Thermal Protection

If the die temperature rises above 165 °C, the thermal protection disables the drivers. The drivers are re-enabled after the die temperature has decreased below 140 °C.

TYPICAL CHARACTERISTICS





SiP41109, SiP41110

Vishay Siliconix

TYPICAL WAVEFORMS

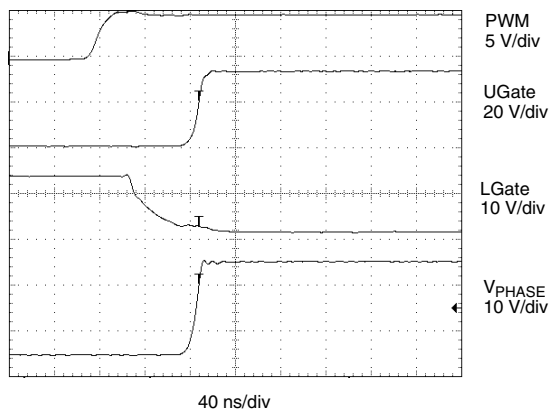


Figure 2. PWM Signal vs. HS Gate, LS Gate and PHASE (Rising)

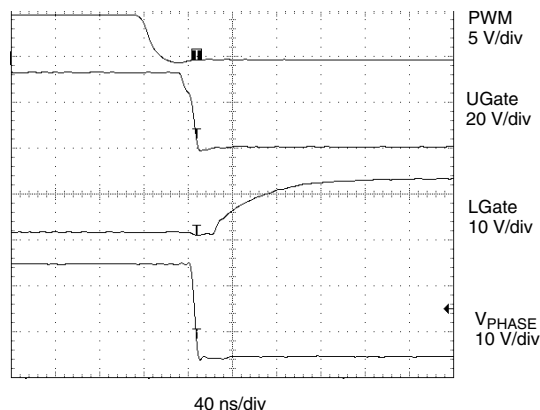


Figure 3. PWM Signal vs. HS Gate, LS Gate and PHASE (Falling)

Vishay Siliconix maintains worldwide manufacturing capability. Products may be manufactured at one of several qualified locations. Reliability data for Silicon Technology and Package Reliability represent a composite of all qualified locations. For related documents such as package/tape drawings, part marking, and reliability data, see www.vishay.com/ppg?73023.



Legal Disclaimer Notice

Vishay

Disclaimer

ALL PRODUCT, PRODUCT SPECIFICATIONS AND DATA ARE SUBJECT TO CHANGE WITHOUT NOTICE TO IMPROVE RELIABILITY, FUNCTION OR DESIGN OR OTHERWISE.

Vishay Intertechnology, Inc., its affiliates, agents, and employees, and all persons acting on its or their behalf (collectively, "Vishay"), disclaim any and all liability for any errors, inaccuracies or incompleteness contained in any datasheet or in any other disclosure relating to any product.

Vishay makes no warranty, representation or guarantee regarding the suitability of the products for any particular purpose or the continuing production of any product. To the maximum extent permitted by applicable law, Vishay disclaims (i) any and all liability arising out of the application or use of any product, (ii) any and all liability, including without limitation special, consequential or incidental damages, and (iii) any and all implied warranties, including warranties of fitness for particular purpose, non-infringement and merchantability.

Statements regarding the suitability of products for certain types of applications are based on Vishay's knowledge of typical requirements that are often placed on Vishay products in generic applications. Such statements are not binding statements about the suitability of products for a particular application. It is the customer's responsibility to validate that a particular product with the properties described in the product specification is suitable for use in a particular application. Parameters provided in datasheets and/or specifications may vary in different applications and performance may vary over time. All operating parameters, including typical parameters, must be validated for each customer application by the customer's technical experts. Product specifications do not expand or otherwise modify Vishay's terms and conditions of purchase, including but not limited to the warranty expressed therein.

Except as expressly indicated in writing, Vishay products are not designed for use in medical, life-saving, or life-sustaining applications or for any other application in which the failure of the Vishay product could result in personal injury or death. Customers using or selling Vishay products not expressly indicated for use in such applications do so at their own risk and agree to fully indemnify and hold Vishay and its distributors harmless from and against any and all claims, liabilities, expenses and damages arising or resulting in connection with such use or sale, including attorneys fees, even if such claim alleges that Vishay or its distributor was negligent regarding the design or manufacture of the part. Please contact authorized Vishay personnel to obtain written terms and conditions regarding products designed for such applications.

No license, express or implied, by estoppel or otherwise, to any intellectual property rights is granted by this document or by any conduct of Vishay. Product names and markings noted herein may be trademarks of their respective owners.