

Excellent Integrated System Limited

Stocking Distributor

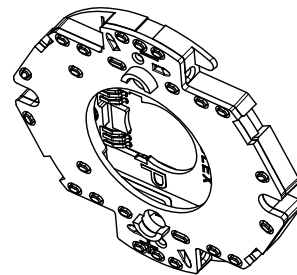
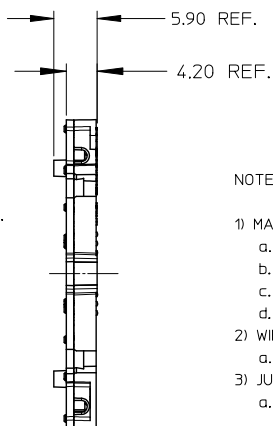
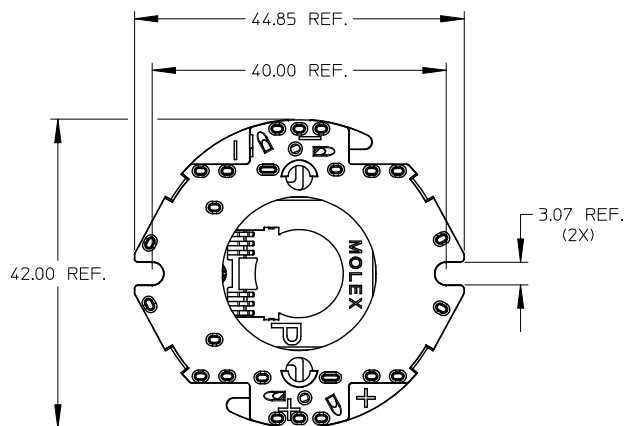
Click to view price, real time Inventory, Delivery & Lifecycle Information:

[Molex Connector Corporation](#)
[1801600001](#)

For any questions, you can email us directly:

sales@integrated-circuit.com

10	9	8	7	6	5	4	3	2	1
PART NUMBER	DESCRIPTION				SHEET				
180160-000	HOLDER WITHOUT LENS - WIRED IN PARALLEL				2				
180160-0001	HOLDER WITH SNAP-ON LENS - WIRED IN PARALLEL				2				
180160-0002	HOLDER WITHOUT LENS - WIRED IN SERIES				3				
180160-0003	HOLDER WITH SNAP-ON LENS - WIRED IN SERIES				3				
N/A	REFLECTOR OPTION				4				



NOTES:

1) MATERIALS:

- a. HOUSING: BLACK COLOR LCP 40% MINERAL FILLED UL94V-2
- b. COVER: BLACK COLOR PA66 NYLON 25% GF UL94V-0
- c. SNAP ON LENS/COVER: CLEAR PC POLYCARBONATE UF UL94HB
- d. JUMPER: NATURAL COLOR PBT POLYESTER 30% GF UL94V-0

2) WIRE TRAP TERMINALS: COPPER ALLOY

- a. FINISH: 2.50 MICRONS (100μ in.) OF TIN OVER 1.25 MICRONS (50μ in.) OF NICKEL

3) JUMPER TERMINALS: PHOSPHOR BRONZE

- a. FINISH 0.25-0.50 MICRONS (10-20μ in.) SELECTIVE HARD GOLD IN CONTACT AREA 1.25-2.50 MICRONS (50-100μ in.) NICKEL ALL OVER

4) THIS PRODUCT IS ELV AND ROHS COMPLIANT

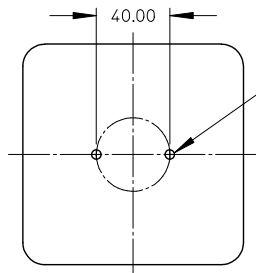
5) APPLICABLE WIRE GAUGE - 18 OR 20 AWG

- a. SOLID WIRE IS RECOMMENDED

- b. IF STRANDED WIRE IS USED, PRE-TINNED IS RECOMMENDED

- c. 1 cm STRIP LENGTH IS RECOMMENDED.

6) MOUNT HOLDER USING M3 OR 4-40 SCREWS (2), 0.8 NEWTON METERS MAX TORQUE

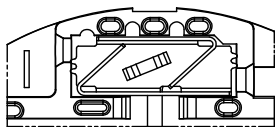
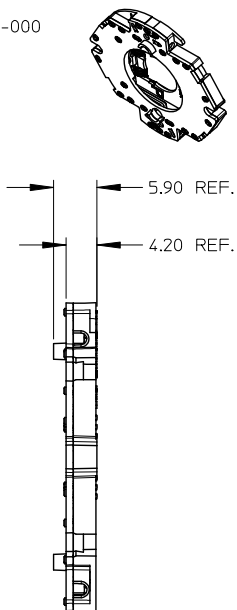
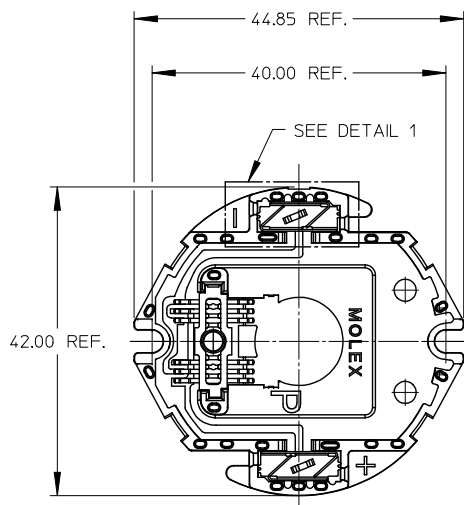


M3 TAPPED HOLES (2)
TORQUE SCREWS 0.8 NEWTON
METERS MAX.

RECOMMENDED MOUNTING DIMENSIONS

ENTER DESCRIPTION EC NO: SSL2012-0059 DRAWN BY: CCARRANZA 2011/12/01 CHKD: DMCGOWAN 2011/12/15 REV	QUALITY SYMBOLS <div>FA=0</div> <div>FB=0</div> <div>FC=0</div>	GENERAL TOLERANCES (UNLESS SPECIFIED)		DIMENSION STYLE MM ONLY		SCALE 2:1	DESIGN UNITS METRIC	THIRD ANGLE PROJECTION	
		mm	INCH	DRAWN BY	DATE	TITLE CREE MP-L EASY WHITE LED HOLDER			
		4 PLACES ± ---	± ---	CCARRANZA	2010/10/07				
		3 PLACES ± ---	± ---	CHECKED BY	DATE	MOLEX INCORPORATED			
		2 PLACES ± 0.13	± ---	APPROVED BY	DATE				
		1 PLACE ± 0.25	± ---	DMCGOWAN	2010/11/23				
		ANGULAR ±1/2°		MATERIAL NO.		DOCUMENT NO.		SHEET NO.	
DRAFT WHERE APPLICABLE MUST REMAIN WITHIN DIMENSIONS		SEE CHART		SD-180160-000		1 OF 4			
		SIZE B		THIS DRAWING CONTAINS INFORMATION THAT IS PROPRIETARY TO MOLEX INCORPORATED AND SHOULD NOT BE USED WITHOUT WRITTEN PERMISSION					

LED HOLDER WIRED IN PARALLEL PART NUMBER 180160-000
(COVER REMOVED FROM FRONT VIEW FOR CLARITY)

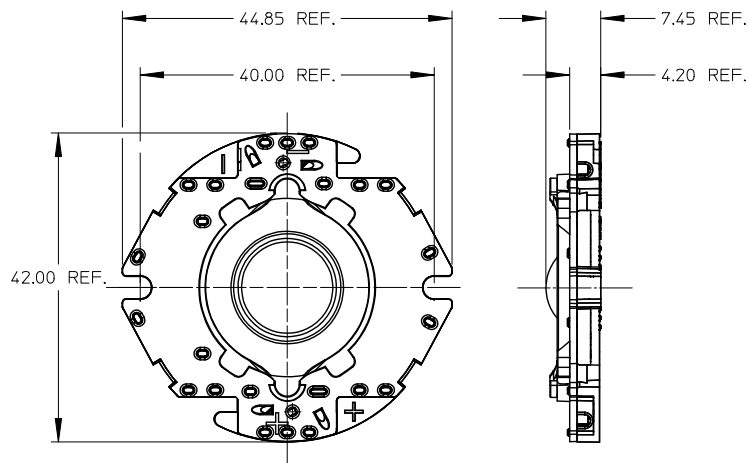


VIEW OF TWO-WAY WIRE TRAP

WIRE TRAPS WILL ACCOMMODATE
EITHER 18 OR 20 GAUGE WIRE

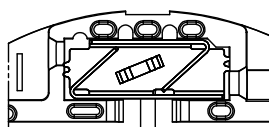
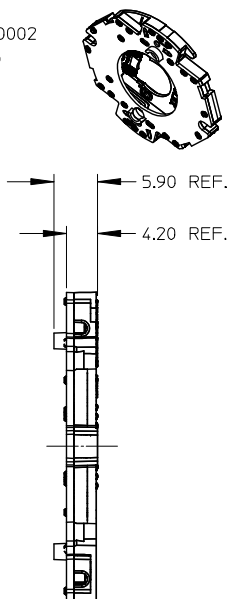
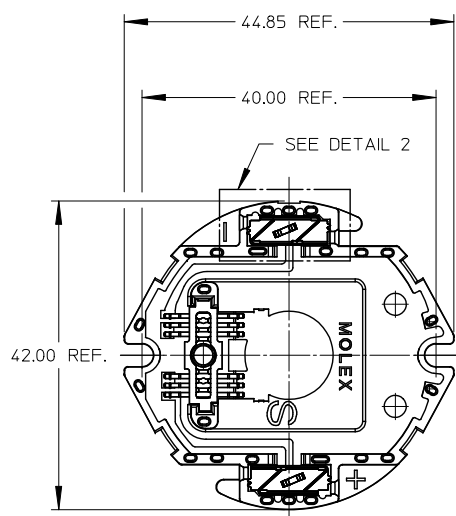
DETAIL 1 SCALE 4:1

LED HOLDER WITH OPTIONAL CLEAR SNAP-ON LENS
WIRED IN PARALLEL PART NUMBER 180160-0001



ENTER DESCRIPTION EC NO: SSL2012-0059 DRAWN BY: CCARRANZA 2011/12/01 CHKD: DMC GOWAN 2011/12/15 REV B1	QUALITY SYMBOLS <div>▽=0</div> <div>▽=0</div> <div>▽=0</div>	GENERAL TOLERANCES (UNLESS SPECIFIED)			DIMENSION STYLE MM ONLY		SCALE 2:1	DESIGN UNITS METRIC	THIRD ANGLE PROJECTION			
		mm		INCH		DRAWN BY CCARRANZA	DATE 2010/10/07	TITLE CREE MP-L EASY WHITE LED HOLDER				
						CHECKED BY DATE						
		4 PLACES ± .005 ± .005				APPROVED BY DMC GOWAN		DATE 2010/11/23	MOLEX INCORPORATED			
		3 PLACES ± .005 ± .005										
		2 PLACES ± 0.13 ± .005										
		1 PLACE ± 0.25 ± .005										
		ANGULAR ± 1/2°										
		DRAFT WHERE APPLICABLE MUST REMAIN WITHIN DIMENSIONS				MATERIAL NO. SEE CHART		DOCUMENT NO. SD-180160-000		SHEET NO. 2 OF 4		
				SIZE B		THIS DRAWING CONTAINS INFORMATION THAT IS PROPRIETARY TO MOLEX INCORPORATED AND SHOULD NOT BE USED WITHOUT WRITTEN PERMISSION						

LED HOLDER WIRED IN SERIES PART NUMBER 180160-0002
(COVER REMOVED FROM FRONT VIEW FOR CLARITY)

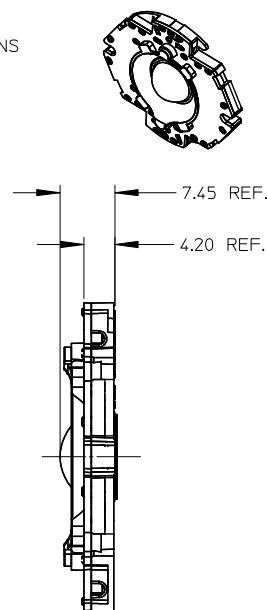
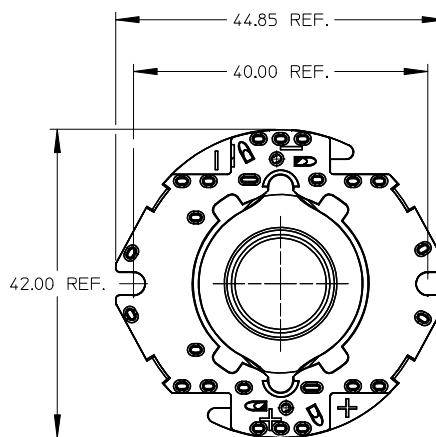


VIEW OF TWO-WAY WIRE TRAP

WIRE TRAPS WILL ACCOMODATE
EITHER 18 OR 20 GAUGE WIRE

DETAIL 2 SCALE 4:1

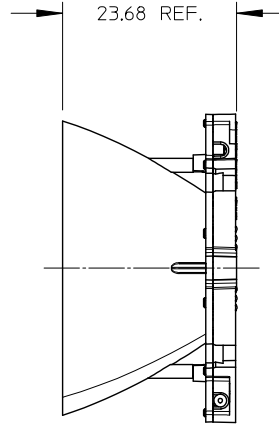
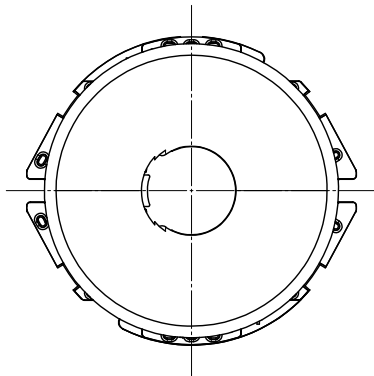
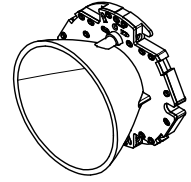
LED HOLDER WITH OPTIONAL CLEAR COVER LENS
WIRED IN SERIES PART NUMBER 180160-0003




ENTER DESCRIPTION EC NO: SSL2012-0059 DRAWN BY: CCARRANZA CHKD: CHYD APPROVED BY: DMCGOWAN REV: B1	DESCRIPTION 2011/12/15	QUALITY SYMBOLS <div>▽=0</div> <div>▽=0</div> <div>▽=0</div>	GENERAL TOLERANCES (UNLESS SPECIFIED)		DIMENSION STYLE MM ONLY		SCALE 2:1	DESIGN UNITS METRIC	THIRD ANGLE PROJECTION		
			mm	INCH	DRAWN BY CCARRANZA	DATE 2010/10/07	TITLE CREE MP-L EASY WHITE LED HOLDER				
			4 PLACES ±---	±---	CHECKED BY	DATE					
			3 PLACES ±---	±---	APPROVED BY DMCGOWAN	DATE 2010/11/23	MOLEX MOLEX INCORPORATED				
			2 PLACES ±0.13	±---							
			1 PLACE ±0.25	±---							
			ANGULAR ±1/2°		MATERIAL NO. SEE CHART DOCUMENT NO. SD-180160-000						
			DRAFT WHERE APPLICABLE MUST REMAIN WITHIN DIMENSIONS								
		SIZE B		THIS DRAWING CONTAINS INFORMATION THAT IS PROPRIETARY TO MOLEX INCORPORATED AND SHOULD NOT BE USED WITHOUT WRITTEN PERMISSION							

SHOWN WITH OPTIONAL LEDIL REFLECTOR AND
MOLEX CLEAR COVER (P/N 180162-0002)

LEDIL REFLECTOR SOLD SEPARATELY @ www.ledil.com



ENTER DESCRIPTION EC NO: SSL2012-0059 DRAWN BY: CCARRANZA 2011/12/01 CHKD: APPRECIATION 2011/12/15 B1	DESCRIPTION	QUALITY SYMBOLS	GENERAL TOLERANCES (UNLESS SPECIFIED)			DIMENSION STYLE		SCALE	DESIGN UNITS	 THIRD ANGLE PROJECTION	
						MM ONLY		1:1	METRIC		
						DRAWN BY	DATE	TITLE			
						CARRANZA	2010/10/07				
						CHECKED BY	DATE	CREE MP-L EASY WHITE LED HOLDER			
						APPROVED BY	DATE	MOLEX INCORPORATED			
						DMCGOWAN	2010/11/23				
						MATERIAL NO.		DOCUMENT NO.			SHEET NO. 4 OF 4
						SEE CHART		SD-180160-000			
DRAFT WHERE APPLICABLE MUST REMAIN WITHIN DIMENSIONS			SIZE B		THIS DRAWING CONTAINS INFORMATION THAT IS PROPRIETARY TO MOLEX INCORPORATED AND SHOULD NOT BE USED WITHOUT WRITTEN PERMISSION						