

Excellent Integrated System Limited

Stocking Distributor

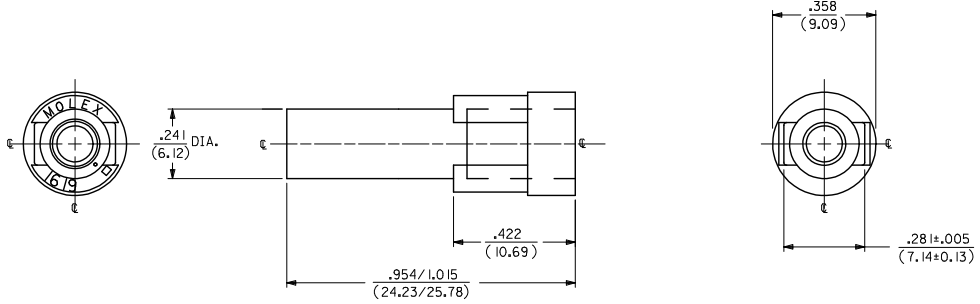
Click to view price, real time Inventory, Delivery & Lifecycle Information:

[Molex Connector Corporation](#)
[03-09-2011](#)

For any questions, you can email us directly:

sales@integrated-circuit.com

ORDER NO.	ENG. NO.	OLD ENG. NO.
03-09-2011	I619-IP1A5MIA	I619-P
03-09-7011	I619-IP1A5MIB	I619-P-D
03-09-7012	I619-IP1A5MIG	-----
03-09-7013	I619-IP1A5MIH	-----



ENGINEERING NUMBER SYSTEM

I619-IP1A5M1*

- COLOR**
- A) NATURAL
 - B) BLACK
 - C) AMBER
 - D) BROWN
 - E) ORANGE
 - F) GRAY
 - G) RED
 - H) BLUE
 - J) GREEN
 - K) YELLOW

NOTES:

- MATERIAL: NYLON 66, UL94V-2, COLOR: SEE LEGEND
- FINISH: NONE
- PRODUCT SPECIFICATION: PS-02-09
- PACKAGING SPECIFICATION: 16190000
- THIS HOUSING IS FOR USE WITH THE .093/(2.36) TERMINALS
- THIS PART CONFORMS TO CLASS B REQUIREMENTS OF COSMETIC SPECIFICATION PS-45499-002.

ADD NOTES EC NO: UCP2016-2183 DRAWN BY: WANG CHKD: BELL APPR: SMITH W3	QUALITY SYMBOLS ∇=0 ∇=0 ∇=0	GENERAL TOLERANCES (UNLESS SPECIFIED)		DIMENSION STYLE IN/MM		SCALE 4:1	DESIGN UNITS INCH	THIRD ANGLE PROJECTION	
		4 PLACES ± --- ± ---	mm	INCH	DRAWN BY	DATE	TITLE HOUSING PLUG .093/(2.36) DIAMETER molex DOCUMENT NO. SD-1619-1P* SHEET NO. 1 OF 1		
		3 PLACES ± --- ± .010			CHECKED BY	DATE			
		2 PLACES ± .25 ± .014			APPROVED BY	DATE			
1 PLACE ± .35 ± ---			DATE	DATE					
		0 PLACE ± --- ± ---							
		ANGULAR ±1/2°		MATERIAL NO.		DOCUMENT NO.			
DRAFT WHERE APPLICABLE MUST REMAIN WITHIN DIMENSIONS		SEE CHART		SIZE		THIS DRAWING CONTAINS INFORMATION THAT IS PROPRIETARY TO MOLEX INCORPORATED AND SHOULD NOT BE USED WITHOUT WRITTEN PERMISSION			