

## Excellent Integrated System Limited

Stocking Distributor

Click to view price, real time Inventory, Delivery & Lifecycle Information:

[Texas Instruments](#)

[TMDXWL1271DC18XL1X](#)

For any questions, you can email us directly:

[sales@integrated-circuit.com](mailto:sales@integrated-circuit.com)

[TI Home](#) > [Semiconductors](#) > [Digital Signal Processor & ARM Microprocessor Platforms](#) > WL1271 Daughter Card for AM18X and OMAP-L1 EVMs and Experimenters

WL1271 Daughter Card for AM18X and OMAP-L1 EVMs and Experimenters **Status:** ACTIVE

## TMDXWL1271DC18XL1X

[Description/Features](#)

[Technical Documents](#)

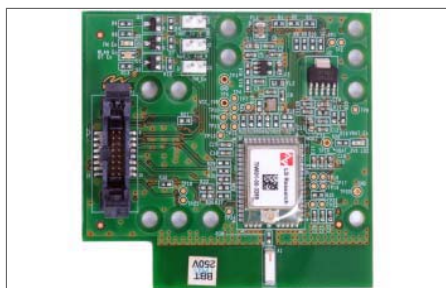
[Support & Community](#)

[Order Now](#)

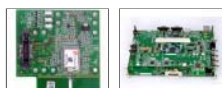
### Description

The WL1271 daughter card for AM18x and OMAP-L1 EVMs is a WLAN and Bluetooth® (BT) add-on card, based on the LS Research TIWI module with Texas Instruments WL1271 device. WL1271 is part of TI's WiLink™ 6.0 product family. The add-on card comes bundled with a comprehensive software package for Linux 2.6, including a WLAN driver providing mobile WLAN connectivity solution for home/SOHO and public environments, and a Bluetooth driver integrated to Linux BlueZ (BT Stack). The WL1271 daughter card will be included in the EVM Box for AM1808 EVM (TMDSEVM1808L).

For additional information (including integrated software development kit [SDK] package and driver release), please visit the [Wiki](#)



TMDXWL1271DC18XL1x Daughter Card



[Order Now](#)

Part Number	Texas Instruments	Status	Price (US\$)
-------------	-------------------	--------	--------------

<http://focus.ti.com/docs/toolsw/folders/print/tmdxwl1271dc18xl1x.html>

5/5/2011