

## **Excellent Integrated System Limited**

Stocking Distributor

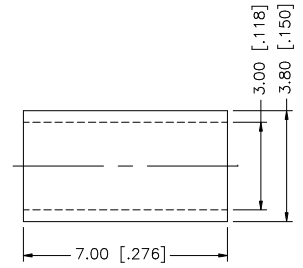
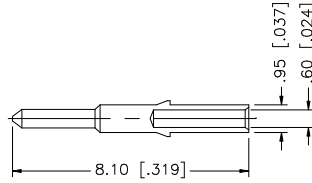
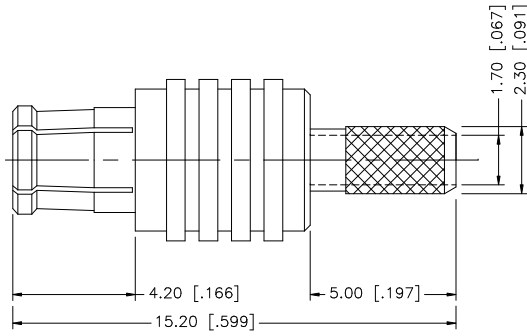
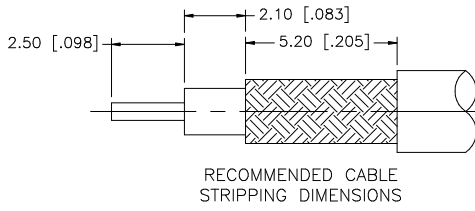
Click to view price, real time Inventory, Delivery & Lifecycle Information:

[Amphenol RF](#)  
[252101](#)

For any questions, you can email us directly:

[sales@integrated-circuit.com](mailto:sales@integrated-circuit.com)

REV.	DATE	DESCRIPTION
A	02/24/04	UPDATE DRAWING FORMAT



8				<small>UNLESS OTHERWISE SPECIFIED DIMENSIONS ARE IN MILLIMETERS. DIMENSIONS IN [ ] ARE IN INCHES AND FOR CUSTOMER REFERENCE ONLY.</small> <small>UNLESS OTHERWISE SPECIFIED TOLERANCES FOR MILLIMETERS ARE:</small> 0.5 - 8mm ± 0.20mm 8 - 30mm ± 0.40mm 30 - 120mm ± 0.50mm <small>UNLESS OTHERWISE SPECIFIED TOLERANCES FOR INCHES ARE:</small> .020 - .315 = ± 0.007" .315 - 1.180 = ± 0.015" 1.180 - 4.724 = ± 0.020"	APPROVALS	DATE	<h1 style="color: blue;">Amphenol Connex</h1>		
7					DRAWN	G.R.S.		02/24/04	PART DESCRIPTION
6					CHECKED				
5					ISSUED				PART NO.
4	FERRULE	COPPER	NICKEL		1	SHEET		1 OF 1	
3	CONTACT PIN	BRASS	GOLD		1	CAD FILE		C:/252/252101.DWG	DWG. NO. 252101.DWG REV. A    SIZE A    SCALE NA
2	INSULATOR	TEFLON	NATURAL		1				
1	BODY	BER. COPPER	NICKEL		1				
	DESCRIPTION	MATERIAL	FINISH	QTY	DO NOT SCALE DRAWING				