

## Excellent Integrated System Limited

Stocking Distributor

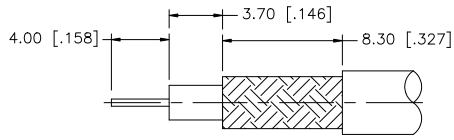
Click to view price, real time Inventory, Delivery & Lifecycle Information:

[Amphenol RF](#)  
[112950](#)

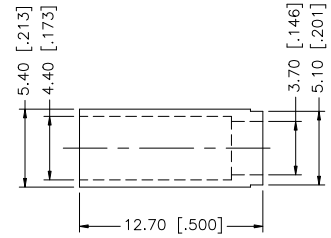
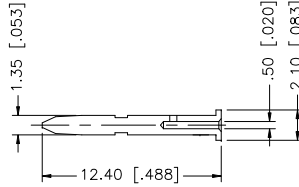
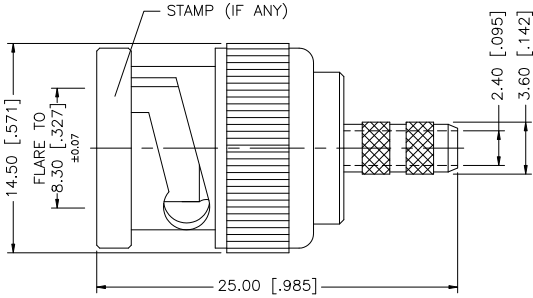
For any questions, you can email us directly:

[sales@integrated-circuit.com](mailto:sales@integrated-circuit.com)

| REV. | DATE     | DESCRIPTION           |
|------|----------|-----------------------|
| A    | 04/05/03 | UPDATE DRAWING FORMAT |
| B    | 08/14/03 | MODIFY DESCRIPTION    |
| C    | 09/16/07 | ADD NOTES 1 THROUGH 4 |



RECOMMENDED CABLE STRIPPING DIM'S



NOTES:

1. IMPEDANCE 75ohms.
2. FREQUENCY RANGE - DC- 4GHz
3. VSWR (RETURN LOSS) 1.3 TO 4GHz
4. DURABILITY - 500 CYCLES MIN.
5. CRIMPED FERRULE HEX CRIMP SIZE .178"
6. CRIMPED CONTACT PIN SQ. CRIMP SIZE .043"

| 8 |             |          |         |     | UNLESS OTHERWISE SPECIFIED DIMENSIONS ARE IN MILLIMETERS; DIMENSIONS IN [ ] ARE IN INCHES AND FOR CUSTOMER REFERENCE ONLY. | APPROVALS | DATE              | <h2 style="text-align: center;">Amphenol Connex</h2> <p style="text-align: center;">PART DESCRIPTION<br/>BNC CRIMP PLUG<br/>(FOR AT&amp;T 735A CABLE - 75ohm)</p> <p style="text-align: center;">PART NO.<br/>112950</p> |  |  |  |          |                        |  |  |  |
|---|-------------|----------|---------|-----|--|-----------|-------------------|--|--|--|--|----------|------------------------|--|--|--|
| 7 |             |          |         |     | UNLESS OTHERWISE SPECIFIED TOLERANCES FOR MILLIMETERS ARE:   | DRAWN     | G.R.S.            |  |  |  |  | 09/16/07 |                        |  |  |  |
| 6 |             |          |         |     | 0.5 - 8mm ± 0.20mm   | CHECKED   |                   |  |  |  |  |          | DWG. NO. 112950.DWG    |  |  |  |
| 5 | FERRULE     | COPPER   | NICKEL  | 1   | 8 - 30mm ± 0.40mm  | ISSUED    |                   |  |  |  |  |          | REV. C SIZE A SCALE NA |  |  |  |
| 4 | GASKET      | RUBBER   | RED     | 1   | 30 - 120mm ± 0.50mm  | SHEET     | 1 OF 1            |  |  |  |  |          |                        |  |  |  |
| 3 | INSULATOR   | TEFLON   | NATURAL | 1   | UNLESS OTHERWISE SPECIFIED TOLERANCES FOR INCHES ARE:  | CAD FILE  | C:/112/112950.DWG |  |  |  |  |          |                        |  |  |  |
| 2 | CONTACT PIN | BRASS    | GOLD    | 1   | .020 - .315 = ± 0.007"   |           |                   |  |  |  |  |          |                        |  |  |  |
| 1 | SHELL/BODY  | BRASS    | NICKEL  | 1   | .315 - 1.180 = ± 0.015"  |           |                   |  |  |  |  |          |                        |  |  |  |
|   | DESCRIPTION | MATERIAL | FINISH  | QTY | 1.180 - 4.724 = ± 0.020"   |           |                   |  |  |  |  |          |                        |  |  |  |
|   |             |          |         |     | DO NOT SCALE DRAWING   |           |                   |  |  |  |  |          |                        |  |  |  |