

Excellent Integrated System Limited

Stocking Distributor

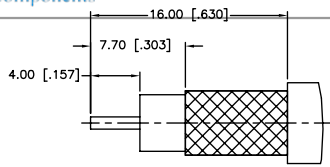
Click to view price, real time Inventory, Delivery & Lifecycle Information:

[Amphenol RF](#)
[172202](#)

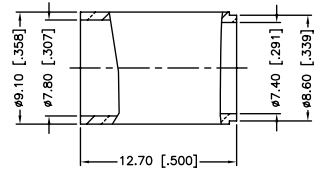
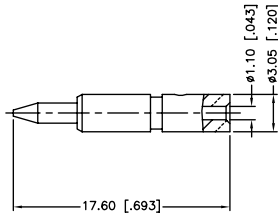
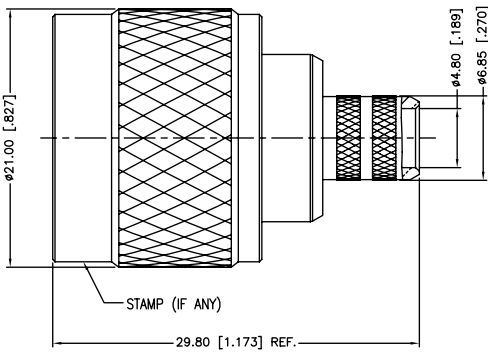
For any questions, you can email us directly:

sales@integrated-circuit.com

REV.	DATE	ECR NO.	DESCRIPTION
NC	02/05/98	XXXXXX	INITIAL RELEASE
A	10/05/05	XXXXXX	INITIAL RELEASE
B	03/27/09	XXXXXX	INITIAL RELEASE
C	05/10/10	2048	CHANGE CENTER CONTACT TO STANDARD 50 OHM CONTACT



RECOMMENDED
CABLE STRIPPING DIM'S



1. CRIMPED FERRULE
HEX CRIMP SIZE .319"
2. CRIMPED CONTACT PIN
HEX CRIMP SIZE .100"

DESCRIPTION	MATERIAL	FINISH	QTY	UNLESS OTHERWISE SPECIFIED DIMENSIONS ARE IN MILLIMETERS. DIMENSIONS IN [] ARE IN INCHES AND FOR CUSTOMER REFERENCE ONLY.	APPROVALS	DATE	PART DESCRIPTION						
9	FERRULE	BRASS	NEXCOTE	1	UNLESS OTHERWISE SPECIFIED TOLERANCES FOR MILLIMETERS ARE: 0.5 - 8mm ± 0.20mm 8 - 30mm ± 0.40mm 30 - 120mm ± 0.50mm UNLESS OTHERWISE SPECIFIED TOLERANCES FOR INCHES ARE: .020 - .315 = ± 0.007" .315 - 1.180 = ± 0.015" 1.180 - 4.724 = ± 0.020" DO NOT SCALE DRAWING	DRAWN	M.ZHANG	05/10/10	Amphenol Connex N CRIMP PLUG (FOR RG-6/U CABLE) PART NO. 172202				
8	CONTACT PIN	BRASS	GOLD	1		CHECKED							
7	RETAINER RING	SUS 304	NATURAL	1		ISSUED							
6	GASKET	SILICONE	RED	1		SHEET	1 OF 1						
5	CONTACT BODY	BRASS	NEXCOTE	1	CAD FILE			DWG. NO. 172202.DWG					
4	INSULATOR	PTFE	NATURAL	1	C:/CONNEX/172202.DWG			REV.	C	SIZE	A	SCALE	NA
3	BARREL	BRASS	NEXCOTE	1									
2	BODY	BRASS	NEXCOTE	1									
1	SHELL	BRASS	NEXCOTE	1									