

## Excellent Integrated System Limited

Stocking Distributor

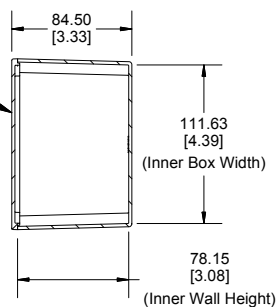
Click to view price, real time Inventory, Delivery & Lifecycle Information:

[Hammond Manufacturing](#)  
[1590EE](#)

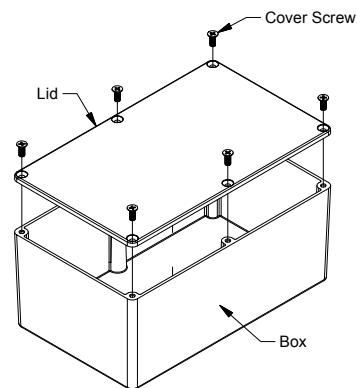
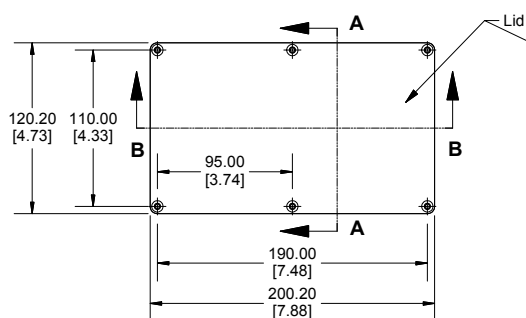
For any questions, you can email us directly:

[sales@integrated-circuit.com](mailto:sales@integrated-circuit.com)

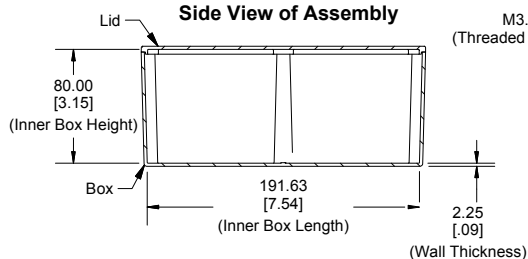
**SECTION A-A  
End View of Assembly**



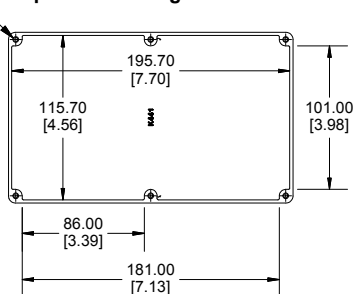
**Top View of Assembly**



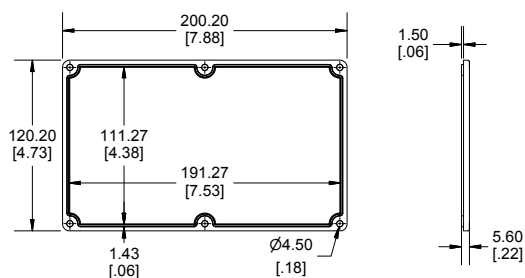
**SECTION B-B  
Side View of Assembly**



**Top View Looking Inside Box**



**Lid**



Enclosures can be Factory Modified ( Milling, Drilling, Printing etc.)  
Contact Factory [mjm@hammondmfg.com](mailto:mjm@hammondmfg.com) for quotes  
Solid models of this enclosure available in STEP or IGES.

**NOTE**

Purchased assembly includes box, lid and 6 cover screws.  
Box and lid are made from Diecast Aluminum Alloy.  
Silicone Gasket supplied with liquid resistant enclosure.

**PART NUMBERS**

1590EE Enclosure	
Unfinished	1590EE
Black Textured Powder Paint	1590EEBK
1590EE Liquid Resistant Enclosure (Silicone Gasket)	
Unfinished	1590WEE
Black Textured Powder Paint	1590WEEBK
ACCESSORIES	
Recommended Torque: 75 ozf.in / 55 cN.m	
Liquid Resistant Cover Screws	
Unfinished Cover Screws (Pkg 100) [M3.5 x 12mm, With O-Ring]	1550WMS100
Black Cover Screws (Pkg 100) [M3.5 x 12mm, With O-Ring]	1550WMS100BK
Standard Cover Screws	
Unfinished Cover Screws (Pkg 100) [M3.5 x 12mm]	1550MS100
Black Cover Screws (Pkg 100) [M3.5 x 12mm]	1550MS100BK

**HAMMOND  
MANUFACTURING™**  
**1590EE**  
www.hammondmfg.com

Dimensions:  
mm  
[inches]