

Excellent Integrated System Limited

Stocking Distributor

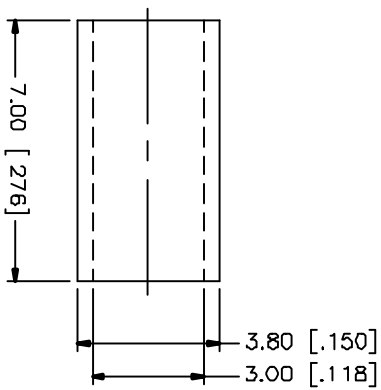
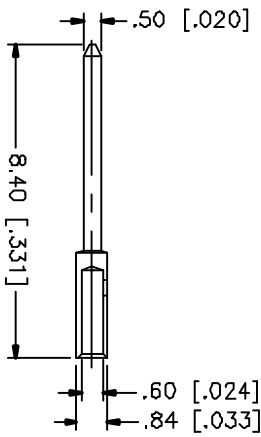
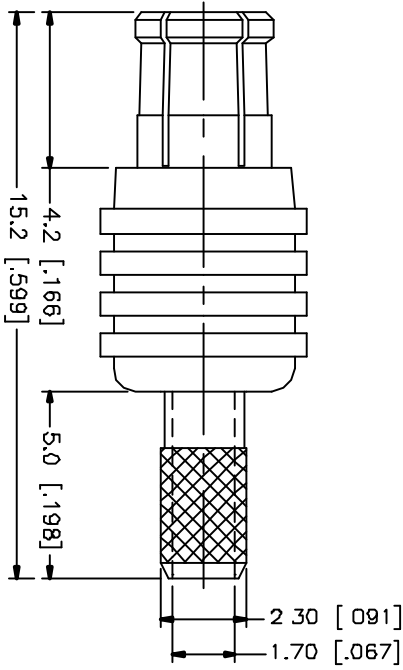
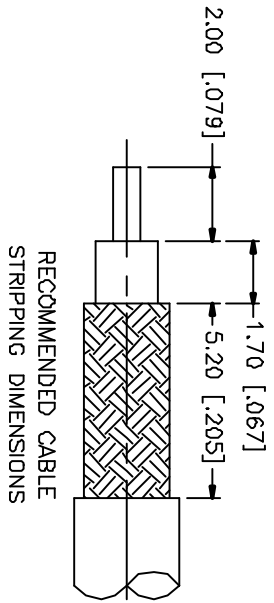
Click to view price, real time Inventory, Delivery & Lifecycle Information:

[Amphenol RF](#)
[252103-75](#)

For any questions, you can email us directly:

sales@integrated-circuit.com

REV.	DATE	DESCRIPTION
NC	11/13/01	INITIAL RELEASE



CRIMP NOTES:

1. CRIMPED FERRULE HEX CRIMP SIZE .128"

DESCRIPTION	MATERIAL	FINISH	UNLESS OTHERWISE SPECIFIED DIMENSIONS ARE IN MILLIMETERS	APPROVALS	DATE	TITLE
1 HOUSING	BRASS	GOLD	DIMENSIONS IN [] ARE IN INCHES FOR CUSTOMER REFERENCE ONLY UNLESS OTHERWISE SPECIFIED TOLERANCES FOR MILLIMETERS ARE: 0.5-6 = ± 0.2 6-50 = ± 0.4 50-120 = ± 0.6 120-315 = ± 1 315-1000 = ± 1.6 1000-2000 = ± 2.4	DRAWN	G.R.S.	11/13/01
2 BODY	BER. COPPER	GOLD		CHECKED		
3 INSULATOR	TEFLON	NATURAL		ISSUED		
4 CONTACT PIN	BRASS	GOLD 30 MN.				
5 FERRULE	COPPER	GOLD				
6						
7						
8						



Comnex Corporation
 MCX STRAIGHT CRIMP PLUG
 (FOR RG-179/u CABLE)

SIZE	FSCM NO.	DWG. NO.	REV.
A	99001	252103-75.DWG	NC
SCALE	PART NO	SHEET	
NA	252103-75	1 OF 1	