

Excellent Integrated System Limited

Stocking Distributor

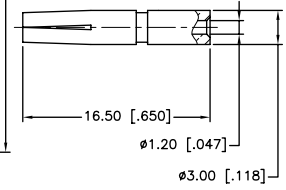
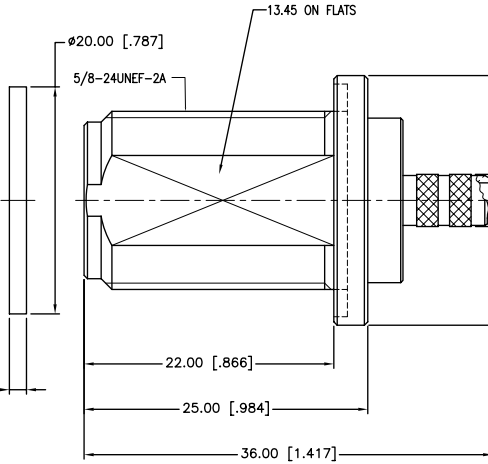
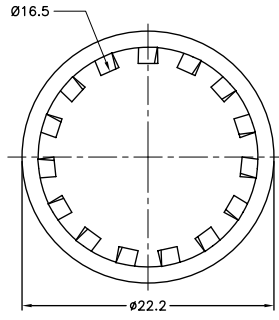
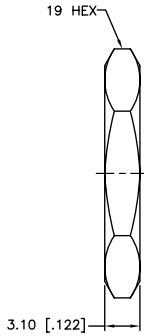
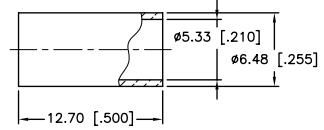
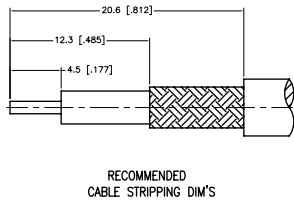
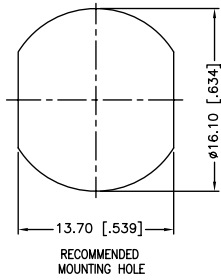
Click to view price, real time Inventory, Delivery & Lifecycle Information:

[Amphenol RF](#)
[172217](#)

For any questions, you can email us directly:

sales@integrated-circuit.com

REV.	DATE	ECR NO.	DESCRIPTION
NC	08/10/98	XXXXXX	INITIAL RELEASE
A	05/25/12	2318	UPDATE FORMAT



- ELECTRICAL:
 - A. IMPEDANCE: 50 OHM
 - B. FREQUENCY RANGE: DC 0-11 GHz
 - C. VSWR(RETURN LOSS): 1.3, MAX.
 - D. DIELECTRIC WITHSTANDING VOLTAGE: 2500 VRMS, MIN.
- MECHANICAL:
 - A. DURABILITY: 500 CYCLES MIN.
 - B. TEMPERATURE RANGE: - 40°C to +155°C
- CRIMPED FERRULE
 - HEX CRIMP SIZE .213"
 - CRIMPED CONTACT PIN
 - HEX CRIMP SIZE .100"

DESCRIPTION	MATERIAL	FINISH	QTY	UNLESS OTHERWISE SPECIFIED DIMENSIONS ARE IN MILLIMETERS. DIMENSIONS IN [] ARE IN INCHES AND FOR CUSTOMER REFERENCE ONLY.	APPROVALS	DATE	<h2 style="text-align: center;">Amphenol Connex</h2>	
8 FERRULE	BRASS	NEXCOTE	1	UNLESS OTHERWISE SPECIFIED TOLERANCES FOR MILLIMETERS ARE: 0.5 - 8mm ± 0.20mm 8 - 30mm ± 0.40mm 30 - 120mm ± 0.50mm UNLESS OTHERWISE SPECIFIED TOLERANCES FOR INCHES ARE: .020 - .315 = ± 0.007" .315 - 1.180 = ± 0.015" 1.180 - 4.724 = ± 0.020" DO NOT SCALE DRAWING	DRAWN	S.LI		05/25/12
7 CONTACT PIN	PHOSPHOR BRONZE	GOLD	1		CHECKED			
6 HEX NUT	BRASS	NEXCOTE	1		ISSUED			
5 LOCK WASHER	BRASS	NEXCOTE	1		SHEET	1 OF 1		
4 GASKET	SILICONE RUBBER	RED	1		PART NO. 172217			
3 BARREL	BRASS	NEXCOTE	1		DWG. NO. 172217			
2 INSULATOR	PTFE	NATURAL	1		REV. A SIZE A SCALE NA			
1 BODY	BRASS	NEXCOTE	1		CAD FILE: C:/CONNEX/172217.DWG			