

## **Excellent Integrated System Limited**

Stocking Distributor

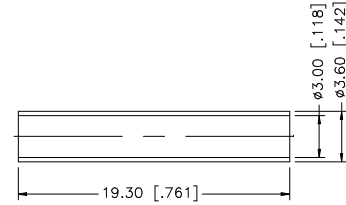
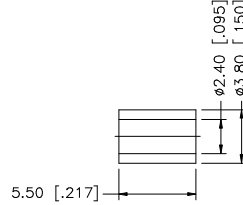
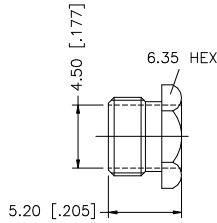
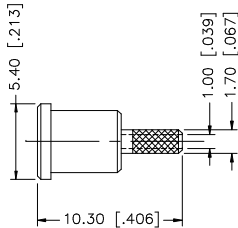
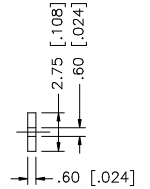
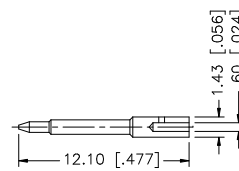
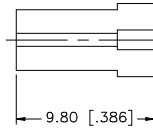
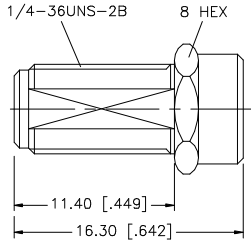
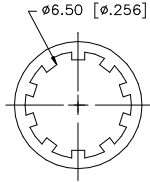
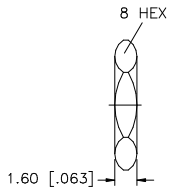
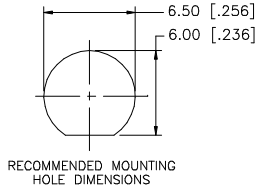
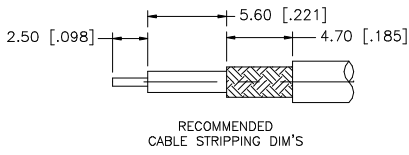
Click to view price, real time Inventory, Delivery & Lifecycle Information:

[Amphenol RF](#)  
[132220RP](#)

For any questions, you can email us directly:

[sales@integrated-circuit.com](mailto:sales@integrated-circuit.com)

REV.	DATE	DESCRIPTION
NC	04/20/99	INITIAL RELEASE
A	06/11/03	UPDATE DRAWING FORMAT/ADD MOUNTING HOLE DIMS.



DESCRIPTION	MATERIAL	FINISH	QTY	UNLESS OTHERWISE SPECIFIED DIMENSIONS ARE IN MILLIMETERS. DIMENSIONS IN [ ] ARE IN INCHES AND FOR CUSTOMER REFERENCE ONLY.	APPROVALS	DATE	Amphenol Connex					
8	HEAT SHRINK			UNLESS OTHERWISE SPECIFIED TOLERANCES FOR MILLIMETERS ARE: 0.5 - 8mm ± 0.20mm 8 - 30mm ± 0.40mm 30 - 120mm ± 0.50mm  UNLESS OTHERWISE SPECIFIED TOLERANCES FOR INCHES ARE: .020 - .315 = ± 0.007" .315 - 1.180 = ± 0.015" 1.180 - 4.724 = ± 0.020"  DO NOT SCALE DRAWING	DRAWN	G.R.S.	06/11/03	PART DESCRIPTION SMA REVERSE POLARIZED BULKHEAD CRIMP JACK (FOR RG-178B/U, 196A/U CABLE)				
7	FERRULE	COPPER	GOLD		1	CHECKED						
6	HEX NUT	BRASS	GOLD		1	ISSUED			PART NO. 132220RP			
5	HEX NUT	BRASS	GOLD		1	SHEET	1 OF 1					
4	BARREL	BRASS	GOLD		1	CAD FILE	C:/132/132220RP.DWG	DWG. NO.	132220RP.DWG	REV. A	SIZE A	SCALE NA
3	CONTACT PIN	BER. COPPER	GOLD		1							
2	INSULATOR	TEFLON	NATURAL		1							
1	HOUSING/BODY	BRASS	GOLD		1							