

Excellent Integrated System Limited

Stocking Distributor

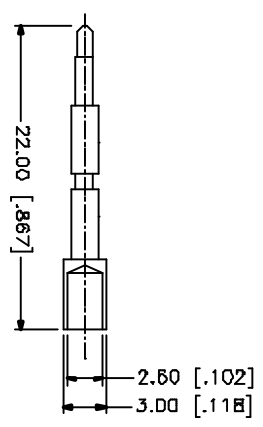
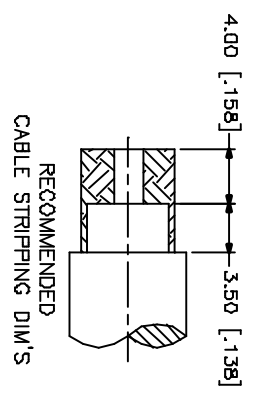
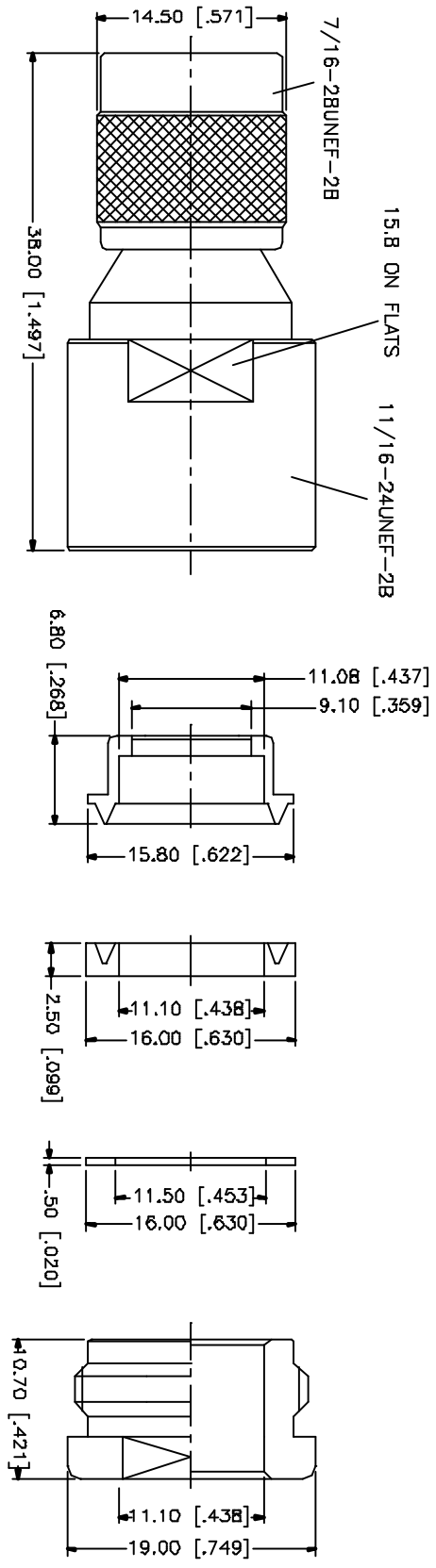
Click to view price, real time Inventory, Delivery & Lifecycle Information:

[Amphenol RF](#)
[122381](#)

For any questions, you can email us directly:

sales@integrated-circuit.com

REV.	DATE	DESCRIPTION
A	03/20/05	MODIFY DESCRIPTION - UPDATE DRAWING FORMAT



QTY	DESCRIPTION	MATERIAL	FINISH	QTY	DO NOT SCALE DRAWING	APPROVALS	DATE	PART DESCRIPTION	DWG. NO.	REV.	SIZE	SCALE
1	DESCRIPTION	MATERIAL	FINISH	QTY	DO NOT SCALE DRAWING	APPROVALS	DATE	PART DESCRIPTION	DWG. NO.	REV.	SIZE	SCALE
1	8 NUT	BRASS	NICKEL	1	UNLESS OTHERWISE SPECIFIED DIMENSIONS ARE IN MILLIMETERS. DIMENSIONS IN [] ARE IN INCHES AND FOR DIMENSIONS REFER TO THE DRAWING AND FOR DIMENSIONS REFER TO THE DRAWING.	APPROVALS G.R.S.	03/20/05	Amphenol Connex TNC CLAMP PLUG (FOR RG-8/U, 213/U, 214/U CABLE)	122381	A	A	N/A
1	7 WASHER	BRASS	NICKEL									
1	6 GASKET	SILICONE	RED									
1	5 BRAID CLAMP	BRASS	NICKEL									
1	4 CONTACT PIN	BRASS	GOLD									
1	3 INSULATOR	TEFLON	NATURAL									
1	2 BODY	BRASS	NICKEL									
1	1											