

Excellent Integrated System Limited

Stocking Distributor

Click to view price, real time Inventory, Delivery & Lifecycle Information:

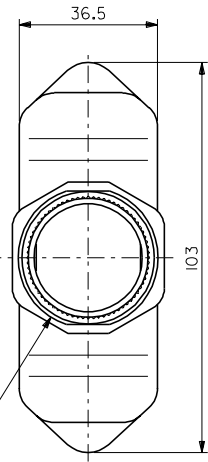
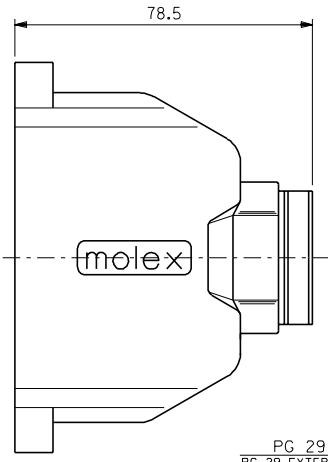
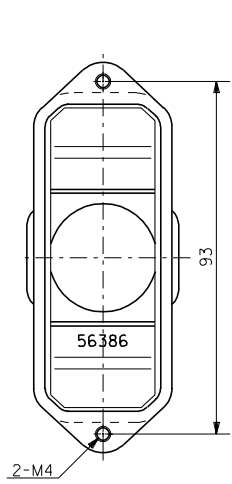
[Molex Connector Corporation](#)
[0563860000](#)

For any questions, you can email us directly:

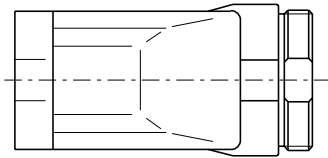
sales@integrated-circuit.com

DWG. NO. SD-56386-002

DO NOT SCALE DRAWING



PG 29 雄ネジ
PG 29 EXTERNAL THREAD



注) NOTES

- 適用リセプタクルシエルアッセンブリ: 58691-***0
APPLICABLE RECEPTACLE SHELL ASS'Y : 58691-***0
- 適用エンドベルキャップセット: 58550-*****
APPLICABLE END BELL CAP SET : 58550-*****
- 適用取り付けねじ (リセプタクルシエルアッセンブリ) : M4x8
APPLICABLE SCREW (RECEPTACLE SHELL ASS'Y) : M4x8

56386-0000	56386-0*00
MATERIAL No.	MODEL NO.

EC NO. DRWN: CHK: APPR:	EC NO. DRWN: CHK: APPR:	EC NO. DRWN: CHK: APPR:	EC NO. DRWN: CHK: APPR:	EC NO. DRWN: CHK: APPR:	RELEASED 01/01/22 EC NO. JD2001-0972 DRWN: S. AKIYAMA CHK: J. MIYAZAWA APPR: H. IKESUGI	DESCRIPTION	MATERIAL 材料	GENERAL TOLERANCES: (UNLESS SPECIFIED) 一般公差	SCALE 1:1	DESIGN UNITS <input checked="" type="checkbox"/> mm <input type="checkbox"/> INCH	THIRD ANGLE PROJECTION <input type="checkbox"/> mm <input type="checkbox"/> INCH <input checked="" type="checkbox"/> mm ONLY	SHT REV	REVISE ON CAD ONLY	
							FINISH 仕上げ							10 UNDER 未満
8	7	6	6	6	O	REV.	WIRE RANGE 適用電線範囲	10 OVER 以上	±0.25	CHECKED BY & DATE S. Akizawa 01/01/22	MOLEX INCORPORATED	MATERIAL NO. SEE CHART	DRAWING NO. SD-56386-002	SHEET NO. 1 OF 1
							INS. RANGE 被覆外径	30 OVER 以上	±0.3	APPROVED BY & DATE S. Akizawa 01/01/22				
								ANGLE 角度				THIS DRAWING CONTAINS INFORMATION THAT IS PROPRIETARY TO MOLEX INCORPORATED AND SHOULD NOT BE USED WITHOUT WRITTEN PERMISSION.		

563860002.S01