

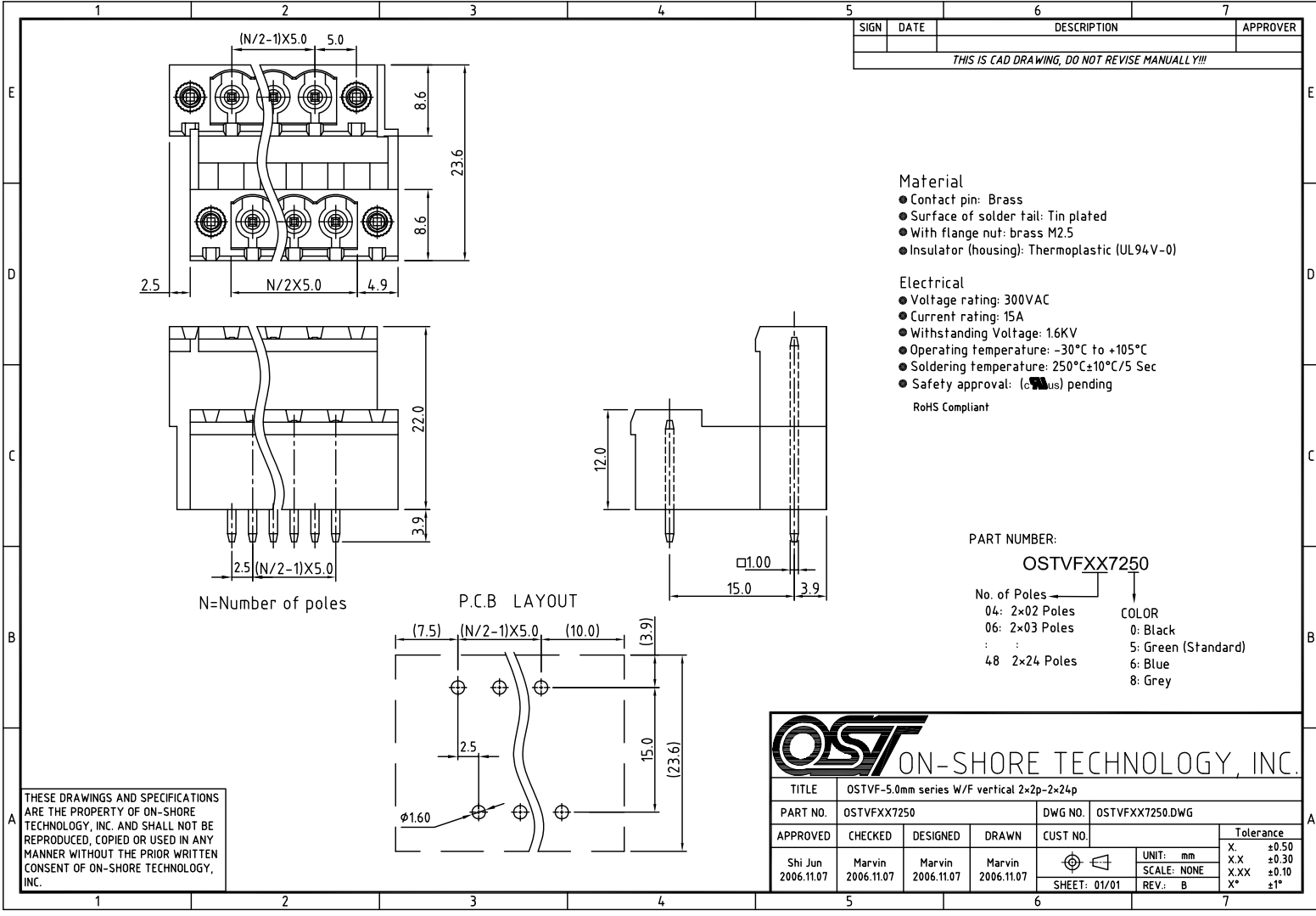
Excellent Integrated System Limited

Stocking Distributor

Click to view price, real time Inventory, Delivery & Lifecycle Information:

[On-Shore Technology, Inc.](#)
[OSTVF047250](#)

For any questions, you can email us directly:
sales@integrated-circuit.com



SIGN	DATE	DESCRIPTION	APPROVER
THIS IS CAD DRAWING, DO NOT REVISE MANUALLY!!!!			

Material

- Contact pin: Brass
- Surface of solder tail: Tin plated
- With flange nut: brass M2.5
- Insulator (housing): Thermoplastic (UL94V-0)

Electrical

- Voltage rating: 300VAC
- Current rating: 15A
- Withstanding Voltage: 1.6KV
- Operating temperature: -30°C to +105°C
- Soldering temperature: 250°C±10°C/5 Sec
- Safety approval: (UL) pending

RoHS Compliant

PART NUMBER:

OSTVFX7250

No. of Poles

- 04: 2x02 Poles
- 06: 2x03 Poles
- 48: 2x24 Poles

COLOR

- 0: Black
- 5: Green (Standard)
- 6: Blue
- 8: Grey

THESE DRAWINGS AND SPECIFICATIONS ARE THE PROPERTY OF ON-SHORE TECHNOLOGY, INC. AND SHALL NOT BE REPRODUCED, COPIED OR USED IN ANY MANNER WITHOUT THE PRIOR WRITTEN CONSENT OF ON-SHORE TECHNOLOGY, INC.



TITLE		OSTVF-5.0mm series W/F vertical 2x2p-2x24p	
PART NO.	OSTVFX7250	DWG NO.	OSTVFX7250.DWG
APPROVED	CHECKED	DESIGNED	DRAWN
Shi Jun 2006.11.07	Marvin 2006.11.07	Marvin 2006.11.07	Marvin 2006.11.07
SHEET: 01/01		REV: B	
UNIT: mm		Tolerance	
SCALE: NONE		X ±0.50	
		X.X ±0.30	
		X.XX ±0.10	
		X* ±1°	