

## **Excellent Integrated System Limited**

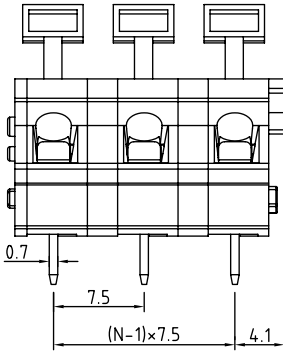
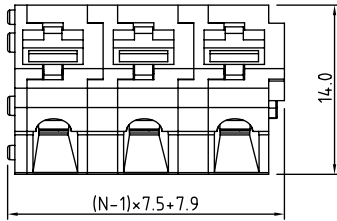
Stocking Distributor

Click to view price, real time Inventory, Delivery & Lifecycle Information:

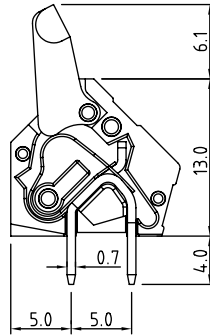
[On-Shore Technology, Inc.](#)  
[OSTHT242080](#)

For any questions, you can email us directly:  
[sales@integrated-circuit.com](mailto:sales@integrated-circuit.com)

SIGN	DATE	DESCRIPTION	APPROVER
△			
△			
△			



N=Number of contacts



**Technical Data:**

**Material:**

- Contact(metal housing): Brass
- Wire guard: Stainless steel
- Surface of solder tail: tin plated
- Insulator body(housing): Polyamide(Glass filled)(UL94V-0)
- Standard Color: Grey

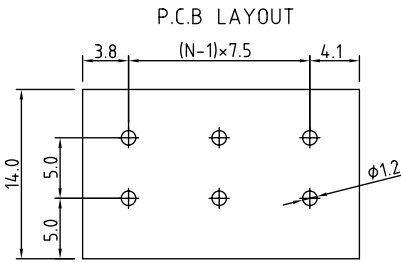
**Electrical:**

- Voltage rating: 300VAC
- Current rating: 16 Amps/way max
- Contact resistance: 20mΩ(max)
- Insulation resistance: 5000MΩ/1000V
- Withstanding Voltage: 1500VAC(1min) Test time=60sec/1pcs
- Wire range: 14-28AWG

**Mechanical:**

- Operating temperature: -30°C to +105°C
- Soldering ability: 95%coverage(min)  
Test temperature= 230°C±10°C  
Test time= 4sec±0.5sec
- Soldering reliability:  
Test temperature= 250°C±10°C  
5 seconds max

THESE DRAWINGS AND SPECIFICATIONS ARE THE PROPERTY OF ON-SHORE TECHNOLOGY, INC. AND SHALL NOT BE REPRODUCED, COPIED OR USED IN ANY MANNER WITHOUT THE PRIOR WRITTEN CONSENT OF ON-SHORE TECHNOLOGY, INC.



<b>OST</b> ON-SHORE TECHNOLOGY, INC.				
PART NAME: OSTHT - 7.5mm Series				TITLE:
PART NO.: OSTHTXX2080 (XX DENOTES NUMBER OF POSITIONS)			DWG NAME: OSTHTXX2080.DWG	
APPROVED BY	CHECKED BY	DESIGNED BY	DRAWN BY	CUSTOM NO.:
		Shi Jun 2003.02.09	Marvin 2003.02.09	
				Tolerance X. ±0.50 X.X ±0.30 X.XX ±0.10 X* ±1*
				UNITS: mm SCALE: 3/1 REVISION: B1