

Excellent Integrated System Limited

Stocking Distributor

Click to view price, real time Inventory, Delivery & Lifecycle Information:

[Molex Connector Corporation](#)
[1060051100](#)

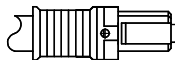
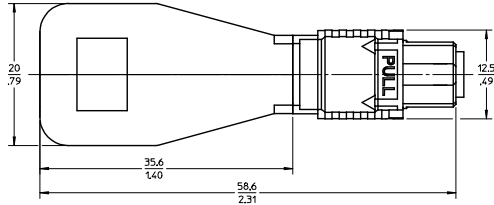
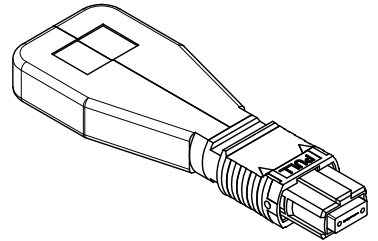
For any questions, you can email us directly:
sales@integrated-circuit.com

PART NUMBER	CHANNELS	TYPE	PINOUT (SEE CHARTS)	INSERTION LOSS SPEC PER ASSEMBLY (SEE NOTE 2)	POLISH TYPE
1060051000	12	SM	12 CHANNEL STANDARD	1.5 dB	APC
1060051001		MM 50/125		1.0 dB	PC
1060051002		MM 62.5/125		5 ±1 dB	APC
1060051003		MM 50/125 5dB ATTEN			
1060051500	8	SM	8 CHANNEL STANDARD	1.5 dB	APC
1060051501		MM 50/125		1.0 dB	PC
1060051502		MM 62.5/125		5 ±1 dB	APC
1060051503		MM 50/125 5dB ATTEN			
1060051100	12	MM 50/125	12 CHANNEL QSFP	1.0 dB	PC
1060051102		MM 50/125		2 ±1 dB	APC
1060051007		SM		1.5 dB	APC

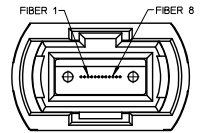
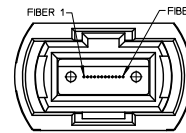
12 CHANNEL STD
FIBER 1 TO 7
2 TO 8
3 TO 9
4 TO 10
5 TO 11
6 TO 12

12 CHANNEL QSFP
FIBER 1 TO 12
2 TO 11
3 TO 10
4 TO 9
5, 6, 7, 8 EMPTY

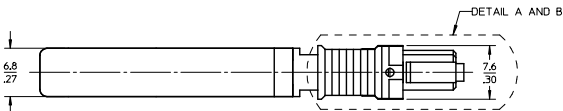
8 CHANNEL STD
FIBER 1 TO 5
2 TO 6
3 TO 7
4 TO 8



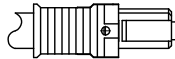
DETAIL A FOR SM ANGLE POLISH (SEE TABLE)



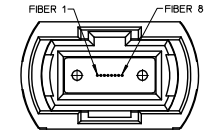
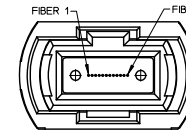
SM ANGLE POLISH IS SHOWN



MM PC POLISH IS SHOWN



DETAIL B FOR MM ANGLE POLISH (SEE TABLE)



MM PC AND ANGLE POLISH ARE SHOWN

PIN OUT DIAGRAMS

NOTES:

- LOOPBACK ASSEMBLY AND ITS COMPONENTS SHALL COMPLY WITH EU DIRECTIVE 2011/65/EU ON THE RESTRICTION OF THE USE OF HAZARDOUS SUBSTANCES IN ELECTRICAL AND ELECTRONIC EQUIPMENT (RoHS).
- INSERTION LOSS (IL) SHOWN IS PER CHANNEL (2 MATED PAIRS).

ENTER DESCRIPTION EC NO: MF2014-0294 DRAWN: GOWIN 2013/11/04 CHKD: GOWIN 2013/11/05 APPR: GOWIN F1 REV	QUALITY SYMBOLS ▽=0 ▽=0	GENERAL TOLERANCES (UNLESS SPECIFIED) mm INCH 4 PLACES ± --- ± --- 3 PLACES ± --- ± --- 2 PLACES ± --- ± --- 1 PLACE ± --- ± --- ANGULAR ± 1 °	DIMENSION STYLE MM/IN DRAWN BY: SERNST DATE: 2007/11/12 CHECKED BY: DATE: APPROVED BY: DATE:	SCALE: 2.5:1 DESIGN UNITS: METRIC THIRD ANGLE PROJECTION	TITLE: LOW PROFILE MTP LOOPBACK CONNECTOR MOLEX INCORPORATED MATERIAL NO. SEE TABLE DOCUMENT NO. SD-106005-1000 SHEET NO. 1 OF 1
	DRAFT WHERE APPLICABLE MUST REMAIN WITHIN DIMENSIONS				
	THIS DRAWING CONTAINS INFORMATION THAT IS PROPRIETARY TO MOLEX INCORPORATED AND SHOULD NOT BE USED WITHOUT WRITTEN PERMISSION				
	SIZE C				