

Excellent Integrated System Limited

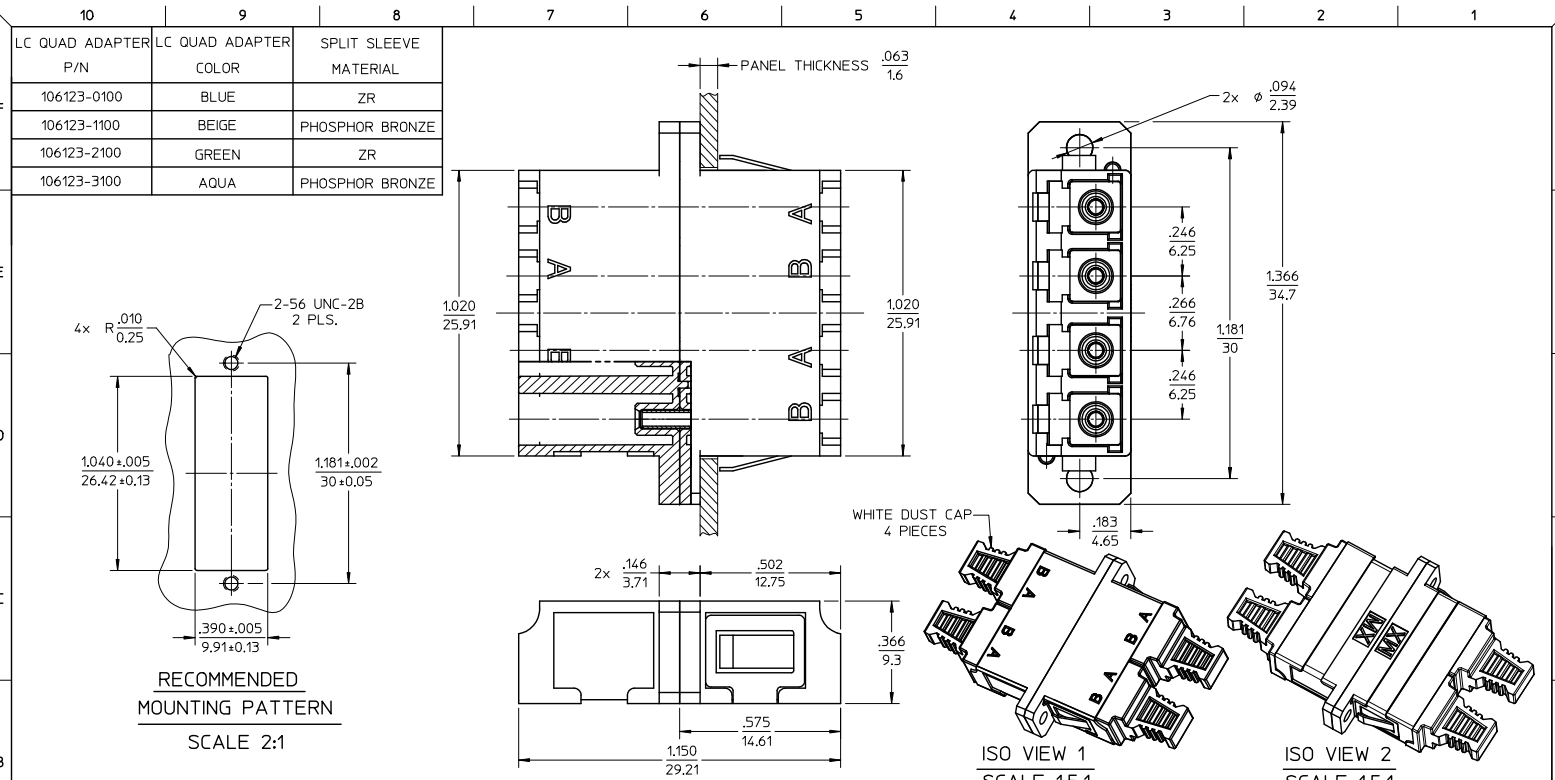
Stocking Distributor

Click to view price, real time Inventory, Delivery & Lifecycle Information:

[Molex Connector Corporation](#)
[1061230100](#)

For any questions, you can email us directly:

sales@integrated-circuit.com



NOTES:

- ALL DIMENSIONS ARE FOR REFERENCE.
- DUST CAPS NOT SHOWN ON FRONT, BOTTOM AND RIGHT VIEW.
- LC QUAD ADAPTER HAS SC DUPLEX ADAPTER FOOTPRINT.

ENTER DESCRIPTION LC NO: ME2013-0549 DRAWN/REVISED: 2013/03/01 CHKD: GJM/N APPR: GJM/N	QUALITY SYMBOLS $\nabla=0$ $\nabla=0$ $\nabla=0$	GENERAL TOLERANCES (UNLESS SPECIFIED)		DIMENSION STYLE		SCALE	DESIGN UNITS	THIRD ANGLE PROJECTION
		mm	INCH	IN/MM	INCH	3:1	INCH	
REV: A1	DESCRIPTION	4 PLACES	\pm ---	\pm ---	DRAWN BY	DATE	TITLE	
		3 PLACES	\pm ---	\pm ---	PGIBLIN	2005/11/21	LC QUAD ADAPTER (SCREW AND SNAP MOUNT)	
		2 PLACES	\pm ---	\pm ---	CHECKED BY	DATE		
		1 PLACE	\pm ---	\pm ---	APPROVED BY	DATE		
		0 PLACE	\pm ---	\pm ---	MATERIAL NO.	DOCUMENT NO.	SHEET NO.	
		ANGULAR	\pm ---	\pm ---	SEE TABLE	SD-106123-X100	1 OF 1	
		DRAFT WHERE APPLICABLE MUST REMAIN WITHIN DIMENSIONS			THIS DRAWING CONTAINS INFORMATION THAT IS PROPRIETARY TO MOLEX INCORPORATED AND SHOULD NOT BE USED WITHOUT WRITTEN PERMISSION			