

## Excellent Integrated System Limited

Stocking Distributor

Click to view price, real time Inventory, Delivery & Lifecycle Information:

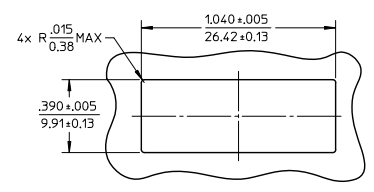
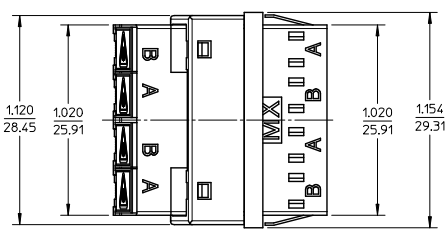
[Molex Connector Corporation](#)  
[1061230500](#)

For any questions, you can email us directly:

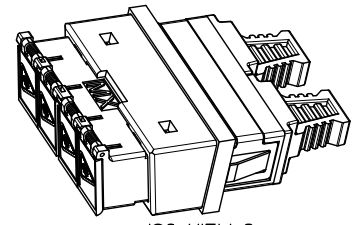
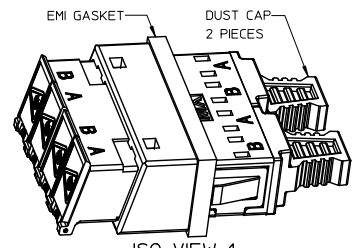
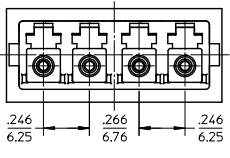
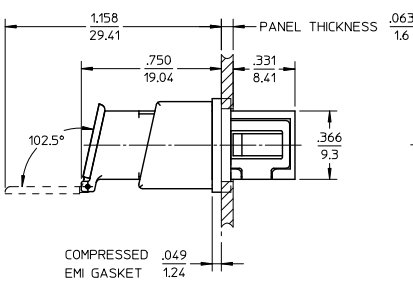
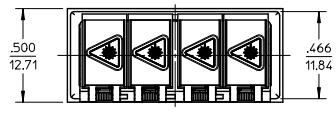
[sales@integrated-circuit.com](mailto:sales@integrated-circuit.com)

10 9 8 7 6 5 4 3 2 106123

ADAPTER P/N	ADAPTER P/N
106123-0500	FABRIC OVER FOAM
106123-0530	SOLID



RECOMMENDED MOUNTING PATTERN



- NOTES:
- ALL DIMENSIONS ARE FOR REFERENCE.
  - TWO DUST CAPS SHOWN IN ISOMETRIC VIEW ONLY.
  - LC EMI QUAD ADAPTER HAS SC DUPLEX ADAPTER FOOTPRINT.

ENTER DESCRIPTION EC NO: MF2010-0345 DRAWN BY: PGIBLIN CHKD: JGUMIN APPR: JGUMIN DATE: 2010/02/09 DATE: 2010/02/11	QUALITY SYMBOLS ▽=0 ∇=0	GENERAL TOLERANCES (UNLESS SPECIFIED)		DIMENSION STYLE		SCALE	DESIGN UNITS	THIRD ANGLE PROJECTION	
			mm	INCH	IN/MM		2:1	INCH	
		4 PLACES	±---	±---	DRAWN BY	DATE	LC EMI QUAD ADAPTER SNAP MOUNT		
		3 PLACES	±---	±---	PGIBLIN	2005/11/21			
2 PLACES	±---	±---	CHECKED BY	DATE	MOLEX INCORPORATED SD-106123-0500				
1 PLACE	±---	±---	JGUMIN	2010/02/09					
ANGULAR ±---°		DRAFT WHERE APPLICABLE MUST REMAIN WITHIN DIMENSIONS		MATERIAL NO.	DOCUMENT NO.	SHEET NO.			
				SEE TABLE		1 OF 1			
				THIS DRAWING CONTAINS INFORMATION THAT IS PROPRIETARY TO MOLEX INCORPORATED AND SHOULD NOT BE USED WITHOUT WRITTEN PERMISSION					

9 8 7 6 5 4 3 2 1