

Excellent Integrated System Limited

Stocking Distributor

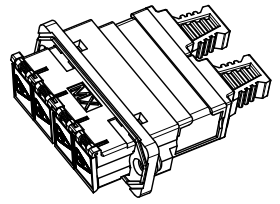
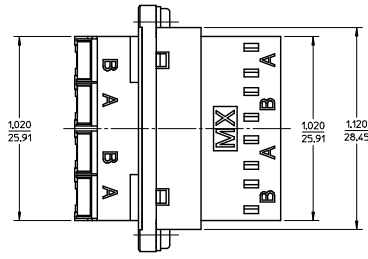
Click to view price, real time Inventory, Delivery & Lifecycle Information:

[Molex Connector Corporation](#)
[1061230650](#)

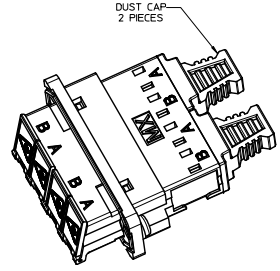
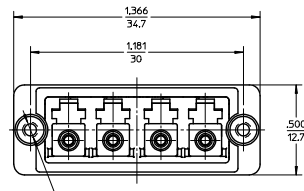
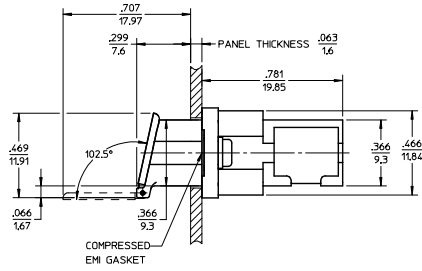
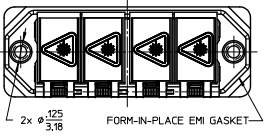
For any questions, you can email us directly:

sales@integrated-circuit.com

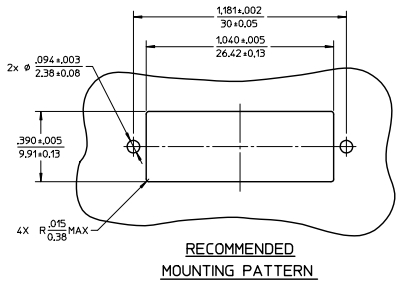
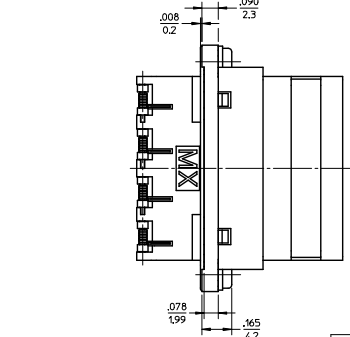
ADAPTER P/N	RECEPTACLE COLOR	LC DOOR COLOR
106123-0600	BLUE	BLUE
106123-0650	GREEN	GREEN



ISO VIEW 2
SCALE 2:1



ISO VIEW 1
SCALE 2:1



RECOMMENDED
MOUNTING PATTERN

- NOTES:
1. ALL DIMENSIONS ARE FOR REFERENCE.
 2. TWO DUST CAPS SHOWN IN ISOMETRIC VIEWS ONLY.
 3. LC EMI QUAD ADAPTER HAS SC DUPLEX ADAPTER FOOTPRINT.

ENTER DESCRIPTION EC NO: MF2013-0264 DRAWN/REVZNER 2012/11/09 CHKD: APPR: IGMJIN 2012/11/09 REV	QUALITY SYMBOLS ∇=0 ∇=0 ∇=0	GENERAL TOLERANCES (UNLESS SPECIFIED)		DIMENSION STYLE IN/MM		SCALE 2.5:1	DESIGN UNITS INCH	THIRD ANGLE PROJECTION
		4 PLACES ± --- ± --- 3 PLACES ± --- ± --- 2 PLACES ± --- ± --- 1 PLACE ± --- ± --- 0 PLACE ± --- ± ---	mm INCH DRAWN BY YB DATE 3.03.06 CHECKED BY SM DATE APPROVED BY IGMJIN DATE 2010/02/23	TITLE LC EMI QUAD ADAPTER SCREW MOUNT			MATERIAL NO. SEE TABLE	DOCUMENT NO. SD-106123-0600
DRAFT WHERE APPLICABLE MUST REMAIN WITHIN DIMENSIONS		THIS DRAWING CONTAINS INFORMATION THAT IS PROPRIETARY TO MOLEX INCORPORATED AND SHOULD NOT BE USED WITHOUT WRITTEN PERMISSION						