

Excellent Integrated System Limited

Stocking Distributor

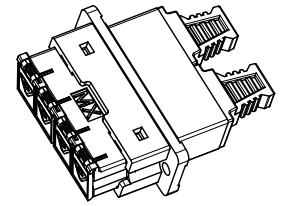
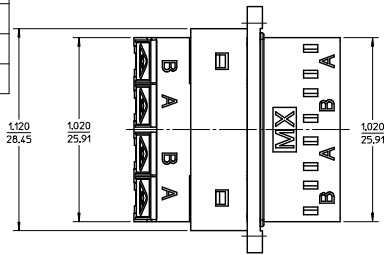
Click to view price, real time Inventory, Delivery & Lifecycle Information:

[Molex Connector Corporation](#)
[1061230700](#)

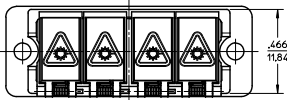
For any questions, you can email us directly:

sales@integrated-circuit.com

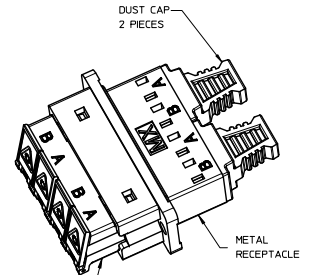
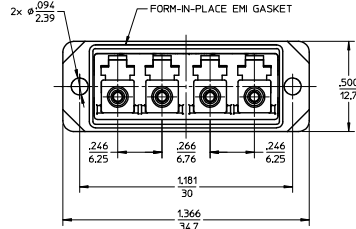
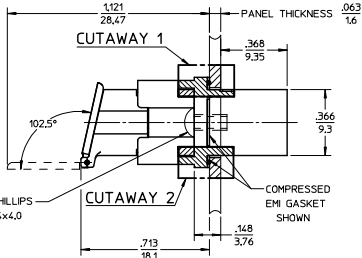
ADAPTER P/N	RECEPTACLE COLOR	LC DOOR COLOR
106123-0700	BLUE	BLUE
106123-0750	GREEN	GREEN
106123-0751	BEIGE	BEIGE



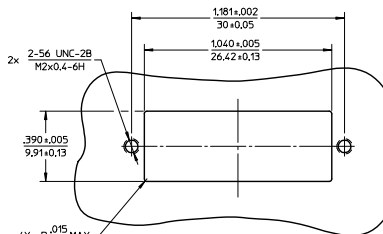
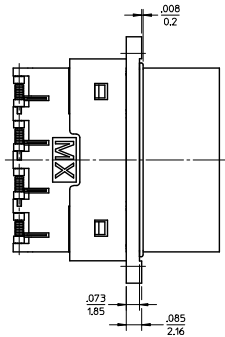
ISO VIEW 2
SCALE 2:1



RECOMMENDED PAN HEAD PHILLIPS
SCREW 2-56 x 3/16 / M2x0.4x4.0
2 PIECES
NOT PROVIDED



ISO VIEW 1
SCALE 2:1



RECOMMENDED
MOUNTING PATTERN

- NOTES:
1. ALL DIMENSIONS ARE FOR REFERENCE.
 2. TWO DUST CAPS SHOWN IN ISOMETRIC VIEWS ONLY.
 3. LC EMI QUAD ADAPTER HAS SC DUPLEX ADAPTER FOOTPRINT.

ENTER DESCRIPTION EC NO: MF2013-0264 DRAWN: KPEZNER 2012/11/09 CHKD: APPR: L GOMIN 2012/11/09	QUALITY SYMBOLS	GENERAL TOLERANCES (UNLESS SPECIFIED)		DIMENSION STYLE		SCALE	DESIGN UNITS	THIRD ANGLE PROJECTION	
		mm	INCH	IN/MM	DATE	INCH	INCH	DATE	DATE
REV A3	▽=0	4 PLACES	± ---	± ---	DRAWN BY	9.02.05	LC EMI QUAD ADAPTER FRONT SCREW MOUNT SC DUPLEX FOOTPRINT	molex	SD-106123-0700
	▽=0	3 PLACES	± ---	± ---	CHECKED BY	9.02.05			
	▽=0	2 PLACES	± ---	± ---	APPROVED BY	9.02.05			
	▽=0	1 PLACE	± ---	± ---	DATE	9.02.05			
		0 PLACE	±	±	MATERIAL NO.		DOCUMENT NO.		SHEET NO.
			ANGULAR ± --- °		SEE TABLE				1 OF 1
			DRAFT WHERE APPLICABLE MUST REMAIN WITHIN DIMENSIONS		THIS DRAWING CONTAINS INFORMATION THAT IS PROPRIETARY TO MOLEX INCORPORATED AND SHOULD NOT BE USED WITHOUT WRITTEN PERMISSION				