

Excellent Integrated System Limited

Stocking Distributor

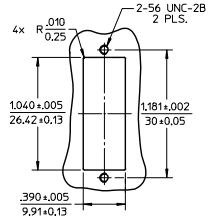
Click to view price, real time Inventory, Delivery & Lifecycle Information:

[Molex Connector Corporation](#)
[1061232200](#)

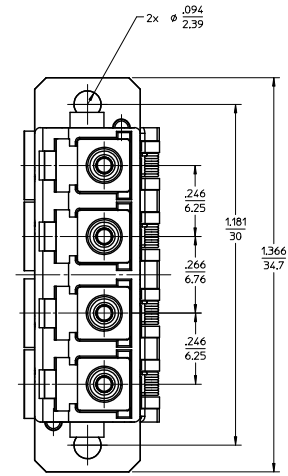
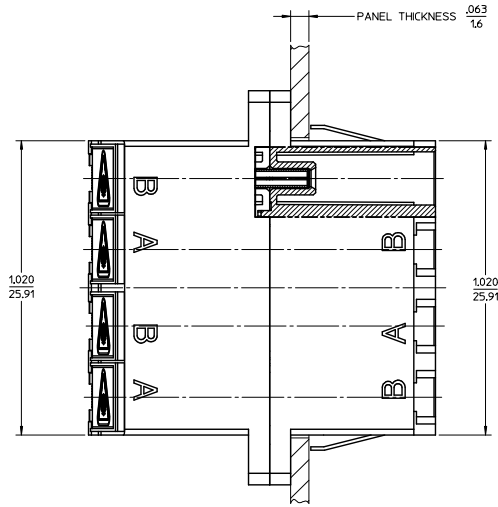
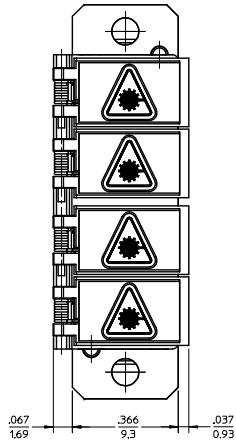
For any questions, you can email us directly:

sales@integrated-circuit.com

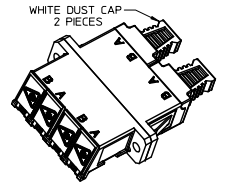
LC QUAD ADAPTER P/N	LC QUAD ADAPTER COLOR	SPLIT-SLEEVE MATERIAL
106123-0200	BLUE	ZR
106123-0205*		
106123-1200		
106123-1205*	BEIGE	PHOSPHOR BRONZE
106123-2200	GREEN	ZR
106123-3200	AQUA	PHOSPHOR BRONZE
106123-3205*		



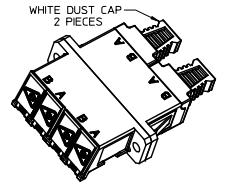
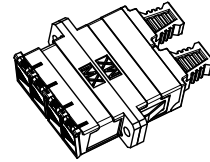
RECOMMENDED MOUNTING PATTERN SCALE 1.5:1



ISO VIEW 2 SCALE 1.5:1



ISO VIEW 1 SCALE 1.5:1



WHITE DUST CAP 2 PIECES

NOTES:

1. ALL DIMENSIONS ARE FOR REFERENCE.
2. DUST CAPS NOT SHOWN ON FRONT, BOTTOM AND RIGHT VIEW.
3. LC QUAD ADAPTER HAS SC DUPLEX ADAPTER FOOTPRINT.
- *4. P/NS MARKED WITH(*) ARE BULK PACKED IN QUANTITIES OF 100 pcs.

ENTER DESCRIPTION EC NO: MF2013-0549 DRWNG: PEZNER 2013/03/04 CHKD: APPR: GOMIN 2013/03/07	QUALITY SYMBOLS ▽=0 ▽=0	GENERAL TOLERANCES (UNLESS SPECIFIED)		DIMENSION STYLE IN/MM		SCALE 4:1	DESIGN UNITS INCH	THIRD ANGLE PROJECTION
		4 PLACES ± --- ± --- 3 PLACES ± --- ± --- 2 PLACES ± --- ± --- 1 PLACE ± --- ± --- ANGULAR ± --- °	DRAWN BY PGIBLIN DATE 2005/11/21	TITLE LC QUAD ADAPTER WITH SHUTTERS (SCREW AND SNAP MOUNT)		MOLEX INCORPORATED		SHEET NO. 1 OF 1
DRAFT WHERE APPLICABLE MUST REMAIN WITHIN DIMENSIONS	MATERIAL NO. SEE TABLE	DOCUMENT NO. SD-106123-X200		THIS DRAWING CONTAINS INFORMATION THAT IS PROPRIETARY TO MOLEX INCORPORATED AND SHOULD NOT BE USED WITHOUT WRITTEN PERMISSION				