

Excellent Integrated System Limited

Stocking Distributor

Click to view price, real time Inventory, Delivery & Lifecycle Information:

[Samtec, Inc.](#)

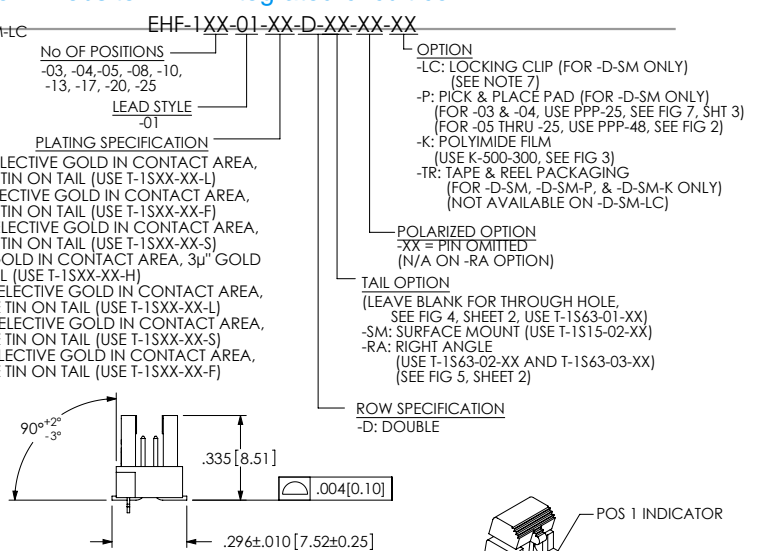
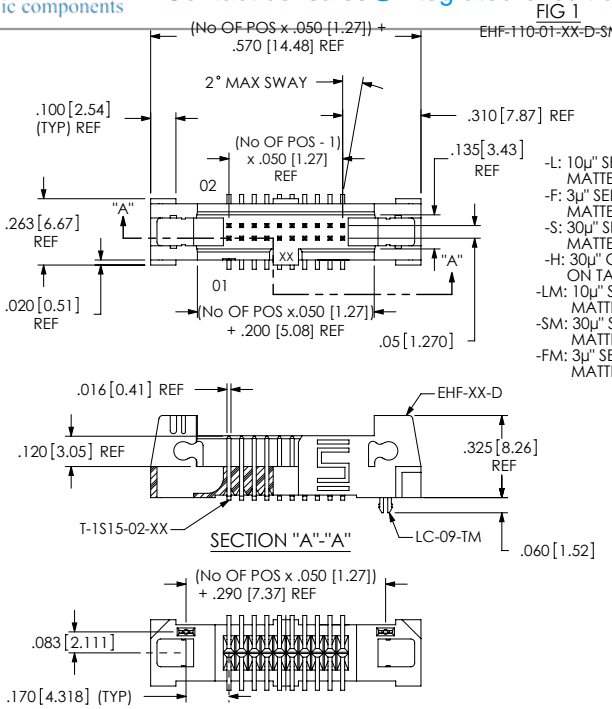
[EHF-105-01-F-D-SM-LC](#)

For any questions, you can email us directly:

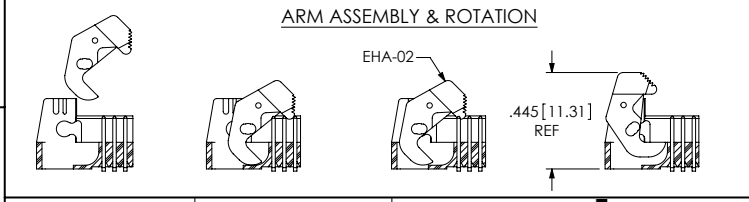
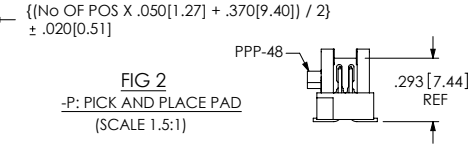
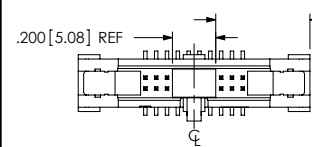
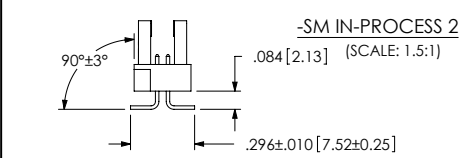
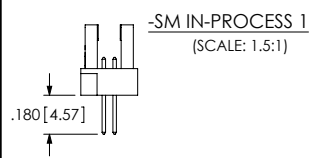
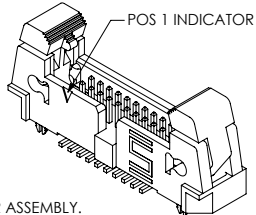
sales@integrated-circuit.com

REVISION AE

DO NOT SCALE FROM THIS PRINT



NOTES:
 1. Ⓞ REPRESENTS A CRITICAL DIMENSION.
 2. COPLANARITY TO BE WITHIN .004 [0.10].
 3. BURR ALLOWANCE: .0015 [0.038] MAX.
 4. MINIMUM PUSHOUT FORCE: 1 LB MIN.
 5. MAXIMUM ALLOWABLE BOW: .002 [0.05] INCH/INCH AFTER ASSEMBLY.
 6. NOTE DELETED.
 7. DUE TO THE HIGH AMOUNT OF INSERTION FORCE NEEDED, THE -LC OPTION IS NOT COMPATIBLE WITH AUTO PLACEMENT. SAMTEC RECOMMENDS MANUAL PLACEMENT FOR ALL ASSEMBLIES WITH THE -LC OPTION.



UNLESS OTHERWISE SPECIFIED, DIMENSIONS ARE IN INCHES. TOLERANCES ARE:
 DECIMALS ANGLES
 .XX: ±.01 [.3] 2°
 .XXX: ±.005 [.13]
 .XXXX: ±.0020 [.051]

PROPRIETARY NOTE
 THIS DOCUMENT CONTAINS INFORMATION CONFIDENTIAL AND PROPRIETARY TO SAMTEC, INC. AND SHALL NOT BE REPRODUCED OR TRANSFERRED TO OTHER DOCUMENTS OR DISCLOSED TO OTHERS OR USED FOR ANY PURPOSE OTHER THAN THAT WHICH IT WAS OBTAINED WITHOUT THE EXPRESSED WRITTEN CONSENT OF SAMTEC, INC.



MATERIAL: DO NOT SCALE DRAWING
 INSULATOR: VECTRA E130I, COLOR BLACK
 50% REGRIND
 TERMINAL: PHOS BRONZE 510 SPRING

DESCRIPTION: .050 EJECTOR HEADER ASSEMBLY
 DWG. NO. EHF-1XX-01-XX-D-XX-XX-XX
 BY: ERIC M. 08/17/01 SHEET 1 OF 3

P:DWG\MISC\MKTG\BEP-1XX-01-X-D-XX-XX-XX-HKT.SLDDRW

REVISION AE

FIG 4

STANDARD THROUGH HOLE
 (SHOWN: EHF-110-01-XX-D)
 (SAME AS FIG 1, UNLESS OTHERWISE STATED)

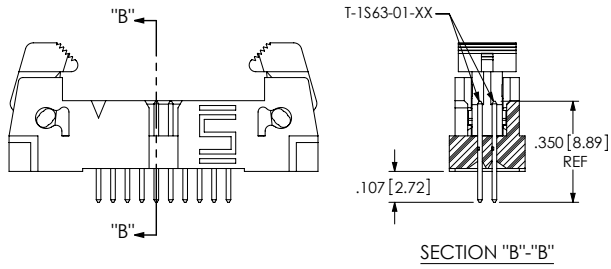
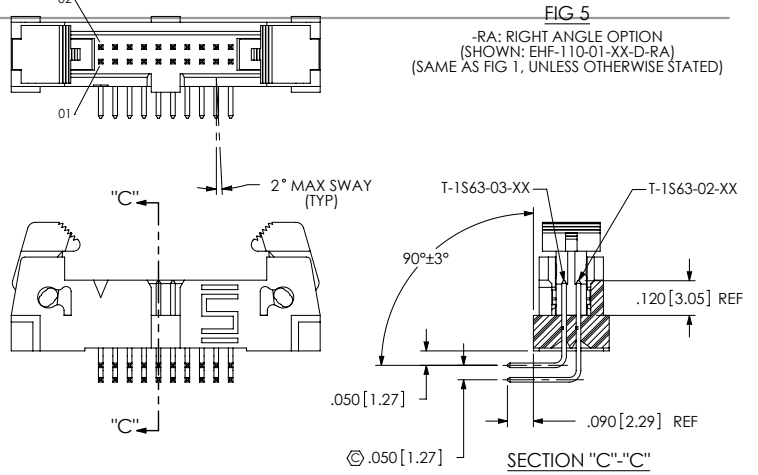
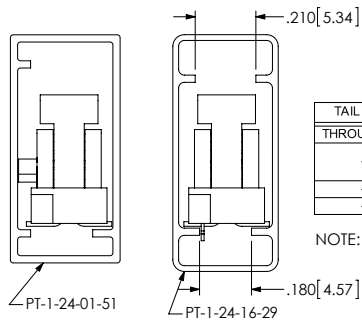


FIG 5

-RA: RIGHT ANGLE OPTION
 (SHOWN: EHF-110-01-XX-D-RA)
 (SAME AS FIG 1, UNLESS OTHERWISE STATED)

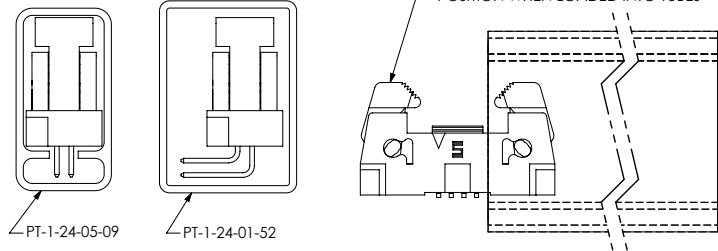


PACKAGING VIEWS
 (LOAD PARTS WITH POSITION #1 INDICATOR
 IN SAME DIRECTION AS ARROW ON TUBE)

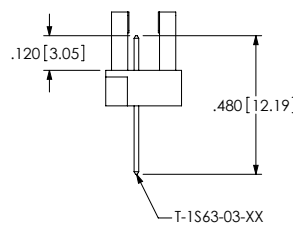


TAIL OPTION	OPTION	PACKAGING TUBE	PLUG
THROUGH HOLE	N/A	PT-1-24-05-09	
-SM	NONE, -LC, -K, -LC-K	PT-1-24-16-29	TP-07
-SM	-P, -LC-P	PT-1-24-01-51	TP-13
-RA	N/A	PT-1-24-01-52	

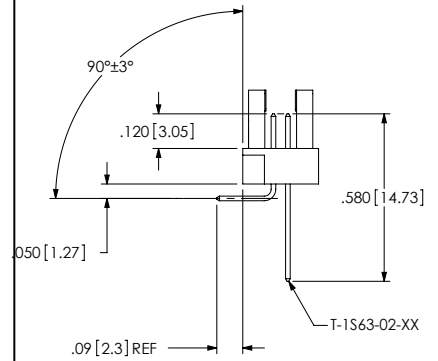
NOTE: ARROW POINTS INTO THE SHEET AWAY FROM YOU.



-RA IN-PROCESS 1



-RA IN-PROCESS 2



F:\DWG\MISC\MKTG\EHF-1XX-01-X-D-XX-XX-XX-MKT.SLDDRW

PROPRIETARY NOTE
 THIS DOCUMENT CONTAINS INFORMATION
 CONFIDENTIAL AND PROPRIETARY TO
 SAMTEC, INC. AND SHALL NOT BE REPRODUCED
 OR TRANSFERRED TO OTHER DOCUMENTS OR
 DISCLOSED TO OTHERS OR USED FOR ANY
 PURPOSE OTHER THAN THAT WHICH IT WAS
 OBTAINED WITHOUT THE EXPRESSED WRITTEN
 CONSENT OF SAMTEC, INC.

DO NOT SCALE DRAWING

SHEET SCALE: 2:1

Samtec
 520 PARK EAST BLVD, NEW ALBANY, IN 47150
 PHONE: 812-944-6733 FAX: 812-948-5047
 e-Mail: info@SAMTEC.com code: 55322

DESCRIPTION: .050 EJECTOR HEADER ASSEMBLY
 DWG. NO. EHF-1XX-01-XX-D-XX-XX-XX
 BY: ERIC M. 08/17/01 SHEET 2 OF 3

REVISION AE

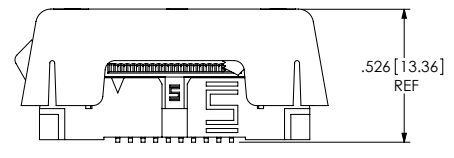
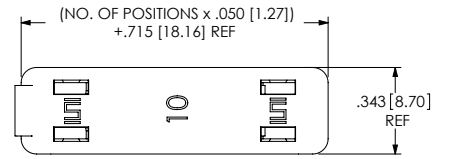
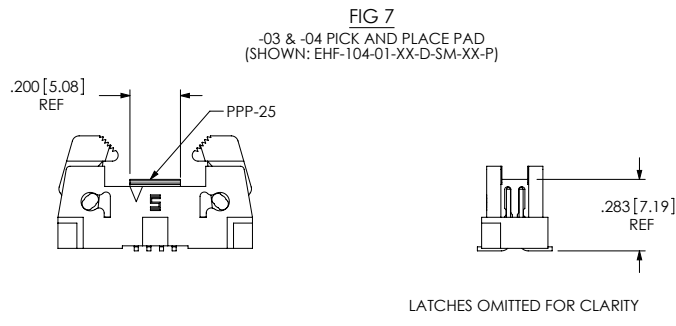
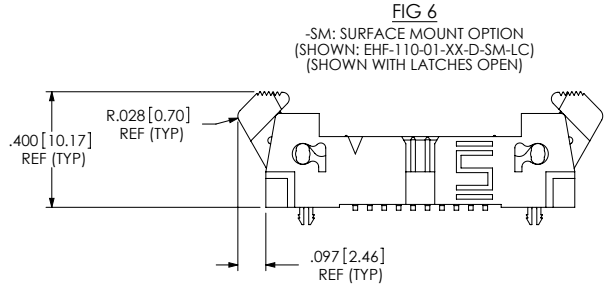


FIG 8
 APPLICATION VIEW
 EHF MATED WITH FFSD AND ECF

PROPRIETARY NOTE
 THIS DOCUMENT CONTAINS INFORMATION CONFIDENTIAL AND PROPRIETARY TO SAMTEC, INC. AND SHALL NOT BE REPRODUCED OR TRANSFERRED TO OTHER DOCUMENTS OR DISCLOSED TO OTHERS OR USED FOR ANY PURPOSE OTHER THAN THAT WHICH IT WAS OBTAINED WITHOUT THE EXPRESSED WRITTEN CONSENT OF SAMTEC, INC.

samtec
 520 PARK EAST BLVD, NEW ALBANY, IN 47150
 PHONE: 812-944-6733 FAX: 812-948-5047
 e-Mail: info@SAMTEC.com code: 55322

DO NOT SCALE DRAWING
 SHEET SCALE: 2:1

DESCRIPTION: .050 EJECTOR HEADER ASSEMBLY
 DWG. NO. EHF-1XX-01-XX-D-XX-XX-XX
 BY: ERIC M. 08/17/01 SHEET 3 OF 3

F:\DWG\MISC\MKTG\EHF-1XX-01-X-D-XX-XX-XX-MKT.SLDDRW