

## Excellent Integrated System Limited

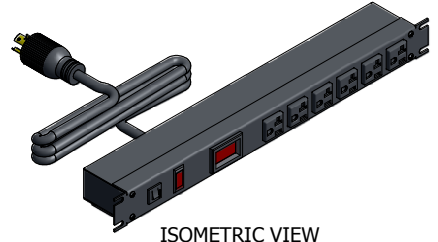
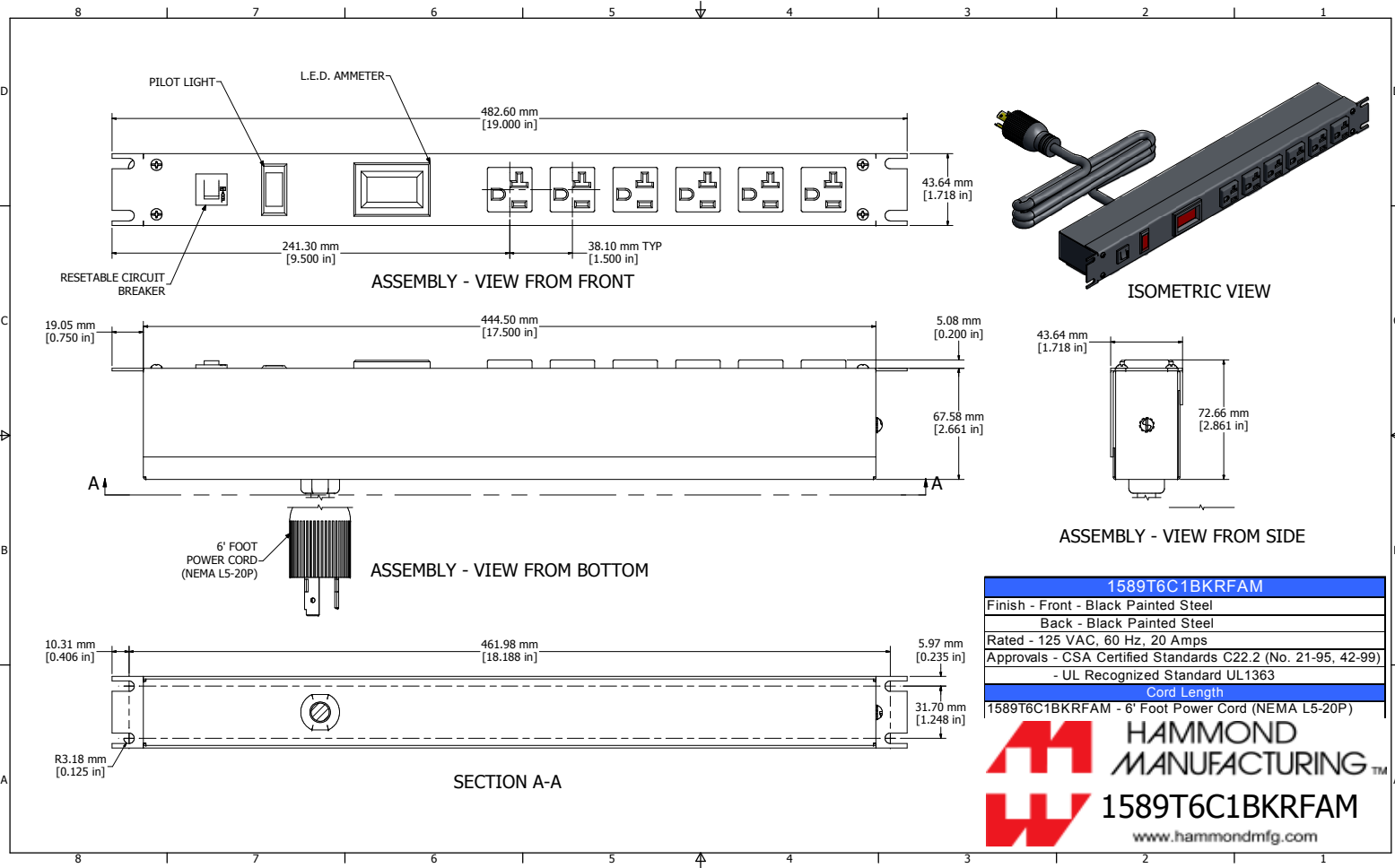
Stocking Distributor

Click to view price, real time Inventory, Delivery & Lifecycle Information:

[Hammond Manufacturing](#)  
[1589T6C1BKRFAM](#)

For any questions, you can email us directly:

[sales@integrated-circuit.com](mailto:sales@integrated-circuit.com)



<b>1589T6C1BKRFAM</b>	
Finish - Front - Black Painted Steel	Back - Black Painted Steel
Rated - 125 VAC, 60 Hz, 20 Amps	
Approvals - CSA Certified Standards C22.2 (No. 21-95, 42-99)	
- UL Recognized Standard UL1363	
<b>Cord Length</b>	
1589T6C1BKRFAM - 6' Foot Power Cord (NEMA L5-20P)	

