



## **Excellent Integrated System Limited**

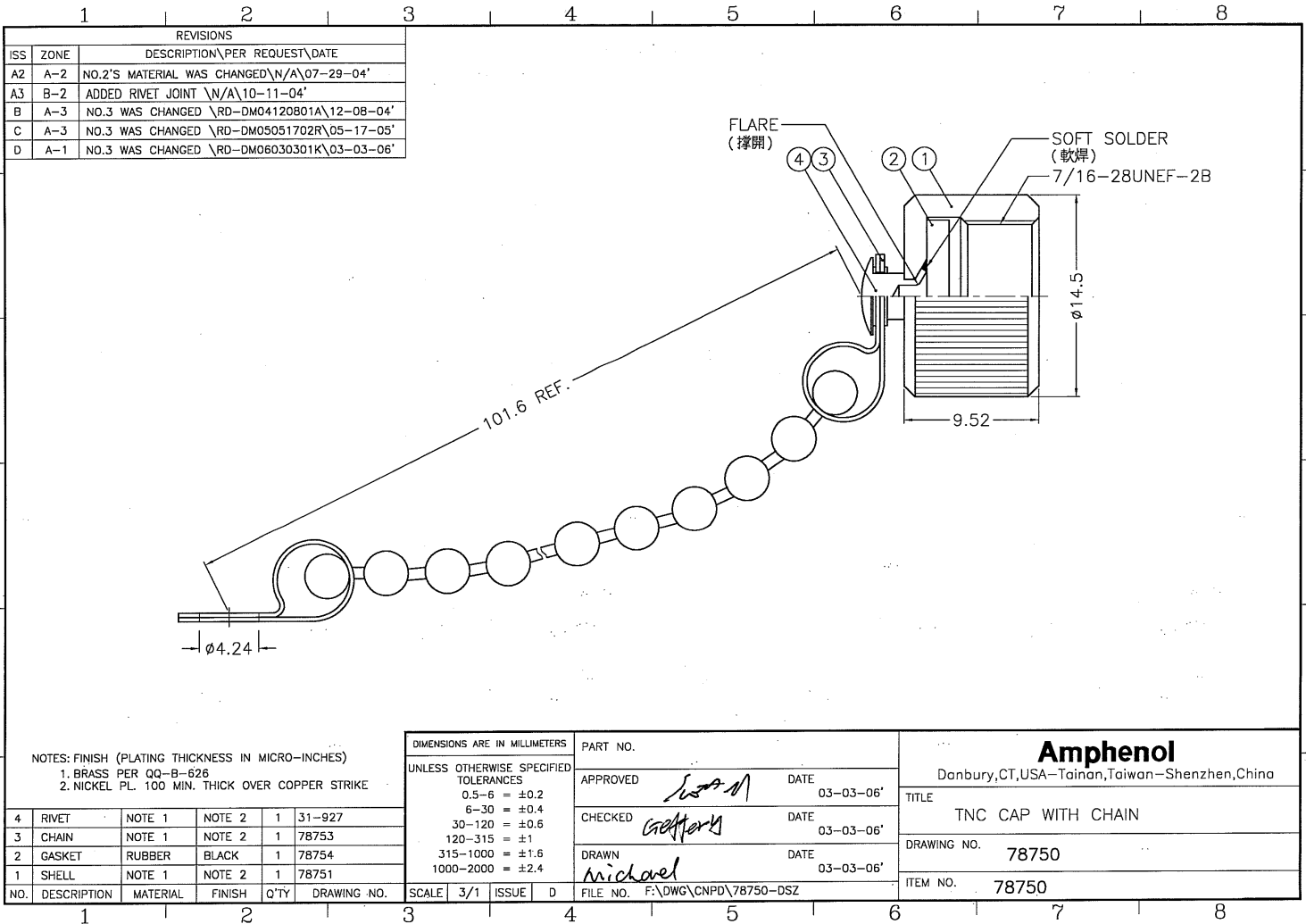
Stocking Distributor

Click to view price, real time Inventory, Delivery & Lifecycle Information:

[Amphenol RF](#)  
[000-78750](#)

For any questions, you can email us directly:

[sales@integrated-circuit.com](mailto:sales@integrated-circuit.com)



REVISIONS			
ISS	ZONE	DESCRIPTION\PER REQUEST\DATE	
A2	A-2	NO.2'S MATERIAL WAS CHANGED\N/A\07-29-04'	
A3	B-2	ADDED RIVET JOINT \N/A\10-11-04'	
B	A-3	NO.3 WAS CHANGED \RD-DM04120801A\12-08-04'	
C	A-3	NO.3 WAS CHANGED \RD-DM05051702R\05-17-05'	
D	A-1	NO.3 WAS CHANGED \RD-DM06030301K\03-03-06'	

NOTES: FINISH (PLATING THICKNESS IN MICRO-INCHES)  
 1. BRASS PER QQ-B-626  
 2. NICKEL PL. 100 MIN. THICK OVER COPPER STRIKE

NO.	DESCRIPTION	MATERIAL	FINISH	Q'TY	DRAWING NO.
4	RIVET			1	31-927
3	CHAIN			1	78753
2	GASKET	RUBBER	BLACK	1	78754
1	SHELL			1	78751

DIMENSIONS ARE IN MILLIMETERS				PART NO.	
UNLESS OTHERWISE SPECIFIED TOLERANCES				APPROVED	DATE
0.5-6	= ±0.2			<i>[Signature]</i>	03-03-06'
6-30	= ±0.4			CHECKED	DATE
30-120	= ±0.6			<i>[Signature]</i>	03-03-06'
120-315	= ±1			DRAWN	DATE
315-1000	= ±1.6			<i>[Signature]</i>	03-03-06'
1000-2000	= ±2.4			FILE NO.	F:\DWG\CNPD\78750-DSZ

<b>Amphenol</b>	
Danbury,CT,USA-Tainan,Taiwan-Shenzhen,China	
TITLE	TNC CAP WITH CHAIN
DRAWING NO.	78750
ITEM NO.	78750