

Excellent Integrated System Limited

Stocking Distributor

Click to view price, real time Inventory, Delivery & Lifecycle Information:

[Schurter](#)
[4804.2410](#)

For any questions, you can email us directly:

sales@integrated-circuit.com

Data and Signal Plug/Socket

www.schurter.com/PG12_4

4804.2410

Daten & Signal, Socket, 7.5 mm, 4-pole, solder terminal, insulated



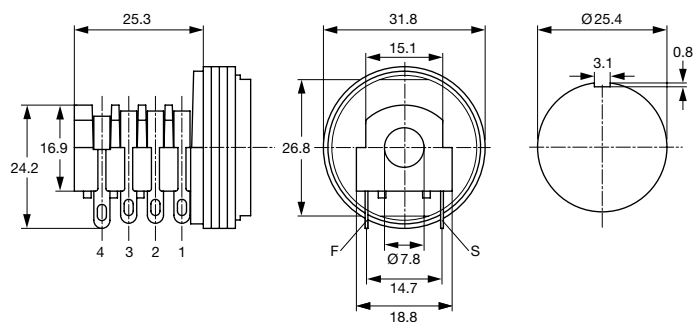
Description

- Solder terminal:
Screw-on mounting, from rear-side
- Data and Signal transfer
- Data and Signal Connectors 4-pole, insulated, straight
- Reinforced gold plating for increased insertions

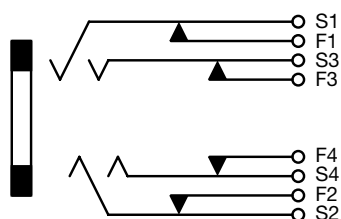
Technical Data

Diameter	7.5 mm	Allowable Operation Temp.	-20 °C to 70 °C
Number of Poles	4-pole	Terminal	solder terminal
Ratings DC	2 A / 12 VDC	Mounting	Screw-on mounting
Ratings AC	2 A / 12 VAC		wall thickness max. 7.6 mm
Dielectric Strength	1000 VDC	Housings	insulated
Insulation Resistance	> 10000 MΩ @ 500 VDC	Style	straight
		Lifetime	10000 Insertions

Dimensions



Diagrams



4804.2410

Data and Signal Plug/Socket
www.schurter.com/PG12_4**All Variants**

Product group	Diameter [mm]	Number of Poles	Terminal	Order Number
Data and Signal Plug/ Sockets	7.5	4-pole	solder terminal	4804.2410

Availability for all products can be searched real-time: <http://www.schurter.com/Stock-Check/Stock-Check-SCHURTER>**Packaging unit** 100 Pcs**Mating Inlets/Plugs****Category / Description**[Data and Signal Plug/Socket Overview complete](#)

Kabeltülle PG12, Plug, solder terminal, insulated, 7.5 mm, 4-pole, straight, UK-Connector

4804.1400

Kabeltülle PG12, Plug, solder terminal, insulated, 7.5 mm, 4-pole, straight, UK-Connector

4804.1401

[Data and Signal Plug/Socket further types to 4804.2410](#)