

Excellent Integrated System Limited

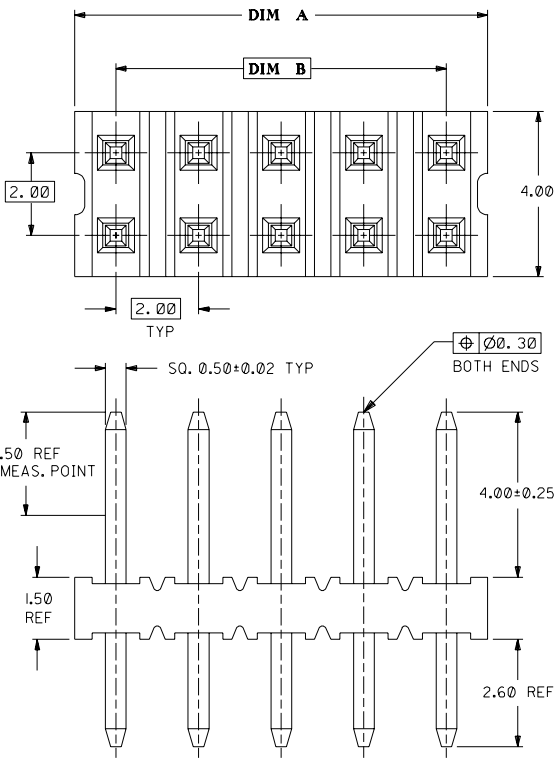
Stocking Distributor

Click to view price, real time Inventory, Delivery & Lifecycle Information:

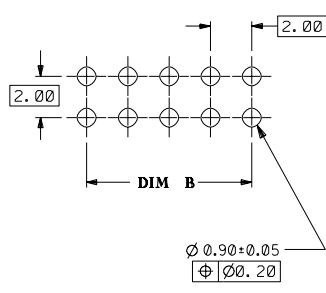
[Molex Connector Corporation](#)
[87089-3616](#)

For any questions, you can email us directly:
sales@integrated-circuit.com

DWG. NO. SD 87089-***16
CAD FILE S8708916.DGN



RECOMMENDED PCB PATTERN
(SCALE 5:1)

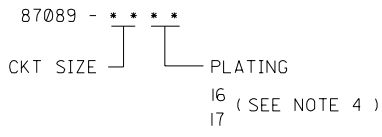


PART NO.	CKT SIZE	DIM A	DIM B
87089-02**	2	NA	NA
87089-04**	4	3.90	2.00
87089-06**	6	5.90	4.00
87089-08**	8	7.90	6.00
87089-10**	10	9.90	8.00
87089-12**	12	11.90	10.00
87089-14**	14	13.90	12.00
87089-16**	16	15.90	14.00
87089-18**	18	17.90	16.00
87089-20**	20	19.90	18.00
87089-22**	22	21.90	20.00
87089-24**	24	23.90	22.00
87089-26**	26	25.90	24.00
87089-28**	28	27.90	26.00
87089-30**	30	29.90	28.00
87089-32**	32	31.90	30.00
87089-34**	34	33.90	32.00
87089-36**	36	35.90	34.00
87089-38**	38	37.90	36.00
87089-40**	40	39.90	38.00
87089-42**	42	41.90	40.00
87089-44**	44	43.90	42.00
87089-46**	46	45.90	44.00
87089-48**	48	47.90	46.00
87089-50**	50	49.90	48.00

NOTES:

- 4 & 6 CKT SIZE ARE MADE BY BREAKING ASSEMBLY P/N 87089-081* AND P/N 87089-121* INTO HALVES RESPECTIVELY. BREAK-AWAY PROFILES ARE EXPECTED TO BE IRREGULAR.
- 2 CKT SIZE ARE MADE BY BREAKING LARGER ASSEMBLY P/N, THE CUT PROFILES ARE IRREGULAR AND UNDEFINED.
- 10 CIRCUIT SIZE SHOWN FOR ILLUSTRATION ONLY. SEE CHART FOR AVAILABLE PART SIZES.
- PLATING FINISH :
 - 16 - 0.38um/15uin MIN. GOLD SELECTIVE AREA 1.90um/75uin MIN. TIN/LEAD IN SELECTED AREA OVER 1.27um/50uin MIN. NICKEL OVERALL
 - 17 - 0.76um/30uin MIN. GOLD SELECTIVE AREA 1.90um/75uin MIN. TIN/LEAD IN SELECTED AREA OVER 1.27um/50uin MIN. NICKEL OVERALL
- PRODUCT SPECIFICATION PS-87049 APPLIES
- RECOMMENDED PC BOARD THICKNESS IS 1.60 ± 0.10mm. mm

PART NUMBER LEGEND



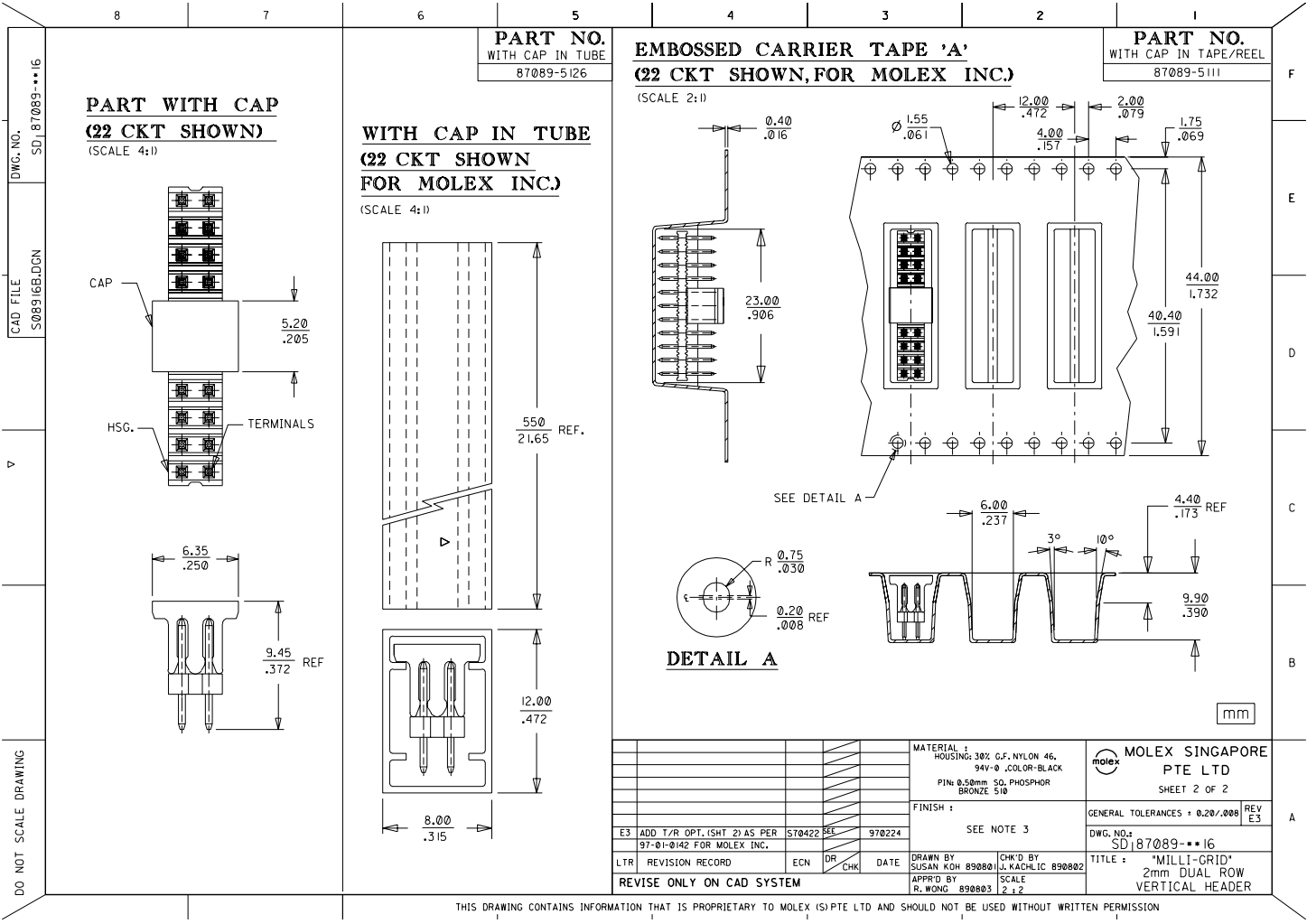
SHT	1	2
REV	E3	E3

E3	ADD T/R OPT. ISHT 21 AS PER 97-01-0142 FOR MOLEX INC.	S70422	SEC	970224
E2	ADD 2 CKT SIZE	S60168	SEC	950929
E1	REVISED HOUSING MAT'L	S40030	SEC	930814
LTR	REVISION RECORD	ECN	DR	CHK
REVISE ONLY ON CAD SYSTEM				

MATERIAL : HOUSING: 30% G.F. NYLON 46, 94V-0 ,COLOR-BLACK PIN: 0.50mm SQ. PHOSPHOR BRONZE 5/0	FINISH : SEE NOTE 3
DRAWN BY SUSAN KOH 890801	CHK'D BY J. KACHLIC 890802
APPR'D BY R. WONG 890803	SCALE 10 : 1

MOLEX SINGAPORE PTE LTD	
SHEET 1 OF 2	
GENERAL TOLERANCES ± 0.20/.008	REV E3
DWG. NO. SD 87089-***16	
TITLE : 'MILLI-GRID' 2mm DUAL ROW VERTICAL HEADER	

DO NOT SCALE DRAWING



DWG. NO. SD 87089-16
 CAD FILE S08916B.DGN
 DO NOT SCALE DRAWING

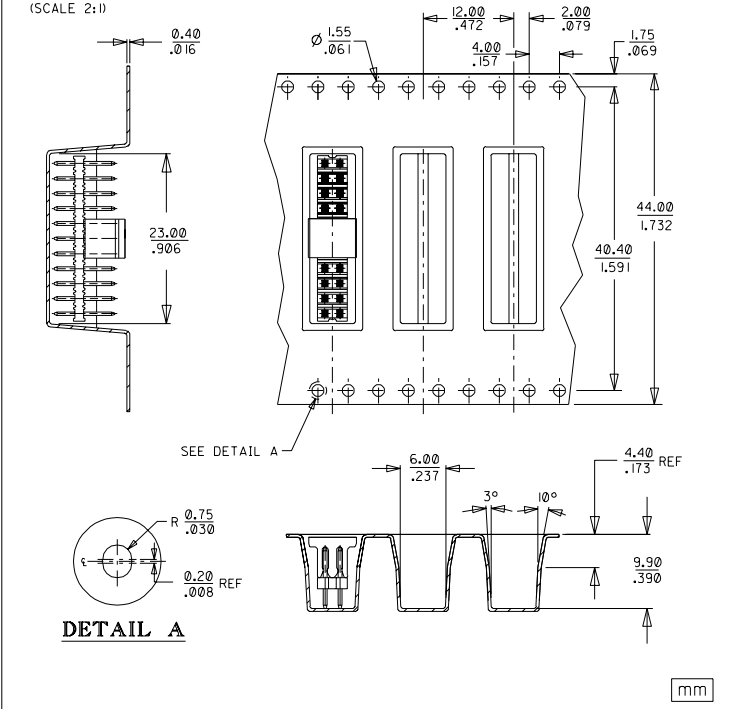
PART NO.
WITH CAP IN TUBE
87089-5126

EMBOSSED CARRIER TAPE 'A'
(22 CKT SHOWN, FOR MOLEX INC.)
(SCALE 2:1)

PART NO.
WITH CAP IN TAPE/REEL
87089-5111

PART WITH CAP
(22 CKT SHOWN)
(SCALE 4:1)

WITH CAP IN TUBE
(22 CKT SHOWN FOR MOLEX INC.)
(SCALE 4:1)



				MATERIAL : HOUSING: 36% GF. NYLON 46, 94V-0, COLOR: BLACK PIN: 0.58mm SQ. PHOSPHOR BRONZE 510		MOLEX SINGAPORE PTE LTD SHEET 2 OF 2	
				FINISH :		GENERAL TOLERANCES ± 0.20/.008	
				SEE NOTE 3		REV E3	
E3	ADD T/R OPT. (SHT 2) AS PER 97-01-0142 FOR MOLEX INC.	ST0422	REL	970224	DWG. NO.: SD 87089-16		
LTR	REVISION RECORD	ECN	DR	CHK	DATE	DRAWN BY SUSAN KOH 890801	CHK'D BY J. KACHIC 890802
REVISE ONLY ON CAD SYSTEM				APPR'D BY R. WONG 890803	SCALE 2 : 2	TITLE : "MILLI-GRID" 2mm DUAL ROW VERTICAL HEADER	

THIS DRAWING CONTAINS INFORMATION THAT IS PROPRIETARY TO MOLEX (S) PTE LTD AND SHOULD NOT BE USED WITHOUT WRITTEN PERMISSION